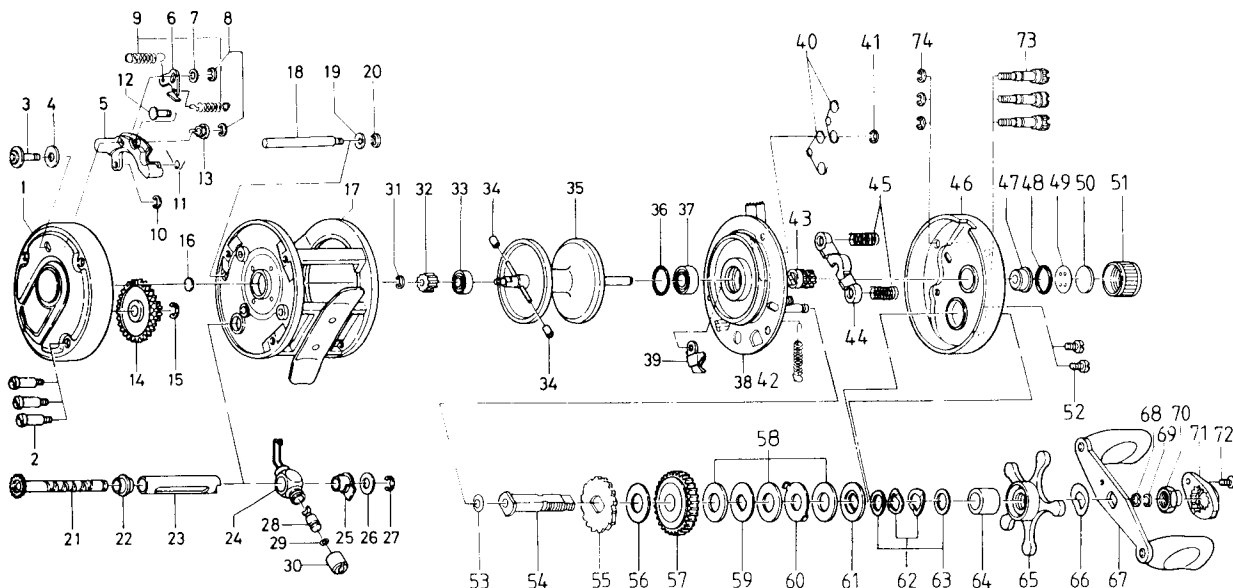


BAITCASTING REEL — Millionaire 5000M / 6000M



Key

No.	Part No.	Part Name	Price
1	K16-2301	Left side plate assembly	13.10
2	K16-9102	Left side plate screw	1.10
3	K16-4202	Click button	1.85
4	K16-4101	Click button washer	.50
5	K16-3701	Click set plate	1.60
6	K16-4301	Click pawl	.90
7	K16-4403	Click pawl washer	.30
8	320-5901	Click pawl retainer	.50
9	K16-4501	Click pawl spring	.50
10	320-5901	Click button retainer	.50
11	K16-4001	Click set plate spring	.60
12	K16-3901	Click set plate pin	.60
13	K16-3801	Click pawl nut	.80
14	K16-3501	Idle gear	1.10
15	K16-3601	Idle gear retainer	.45
16	K16-4601	Spacer A	.50
17	K16-4701	Frame assembly	19.00
18	K16-7301	Stabilizer bar	2.35
19	K15-9801	Stabilizer bar spring washer	.50
20	320-5901	Stabilizer bar retainer	.50
21	K16-6301	Worm shaft	7.00
22	K16-6801	Worm bearing A	.70
23	K16-5701	Level wind guard	3.30
24	K16-6001	Line guide	5.25
25	K16-5901	Worm bearing B	.70
26	K16-4403	Worm shaft holder washer	.30
27	320-5901	Worm shaft retainer	.50
28	K16-7001	Line guide pawl	2.85
29	K16-7101	Line guide washer	.50
30	K16-7201	Pawl cap	1.65
31	B33-9801	Bearing retainer	.35
32	K16-8801	Spool gear	1.35
33	K16-8701	Ball bearing	9.60
34	K16-9001	Brake collar	.75
35	K16-7601	Spool assembly	22.00
36	K15-8501	"O" ring	.75
37	K15-8701	Ball bearing	8.25
38	K15-7201	Set plate assembly	14.50
39	K15-9501	Anti-reverse pawl	2.30
40	K15-8801	Set plate spring A	.60
41	320-1402	Clutch retaining ring	.40
94 42	K15-8901	Set plate spring B	.70

Key

No.	Part No.	Part Name	Price
43	K15-9101	Pinion gear	7.70
44	K15-9001	Yoke	1.15
45	K15-9401	Yoke spring	.50
46	K15-6101	Right side plate assembly	12.50
47	K15-6701	Bush	1.10
48	K15-6601	"O" ring	.65
49	K15-6801	Spacer B	.60
50	K15-6901	Spool tension spring	.55
51	K15-7002	Cast control cap	1.80
52	K16-0902	Set plate screw	.60
53	K15-9801	Drive shaft washer A	.50
54	K15-9901	Drive shaft	4.25
55	K16-0001	Anti-reverse ratchet	1.30
56	K16-0101	Drive shaft washer B	.60
57	K16-0201	Drive gear	12.60
58	K16-0102	Drag washer A	1.10
59	K16-0401	Key washer A	.75
60	K16-0501	Eared washer	.60
61	K16-0601	Key washer B	.95
62	K16-0701	Drag spring washer	.55
63	373-7803	Drag washer B	.60
64	K16-0801	Spacing sleeve	1.05
65	K16-1001	Star drag	4.85
66	K16-1401	Friction washer	.45
67	K16-1502	Handle assembly	5.50
68	K16-1801	Handle nut washer	.45
69	K16-1901	Handle nut retainer	.45
70	K16-2002	Handle nut	2.10
71	K16-2101	Handle nut plate	.75
72	351-1803	Handle nut plate screw	.45
73	K15-6502	Right side plate screw	1.25
74	320-5901	Right side plate screw retainer	.50

6000M Special Parts:

1	K16-2302	Left side plate assembly	13.10
17	K16-4801	Frame assembly	20.00
18	K16-7401	Stabilizer bar	2.10
21	K16-6401	Worm shaft	7.50
23	K16-5801	Level wind guard	3.70
35	K16-7801	Spool assembly	23.00
46	K15-6102	Right side plate assembly	12.50