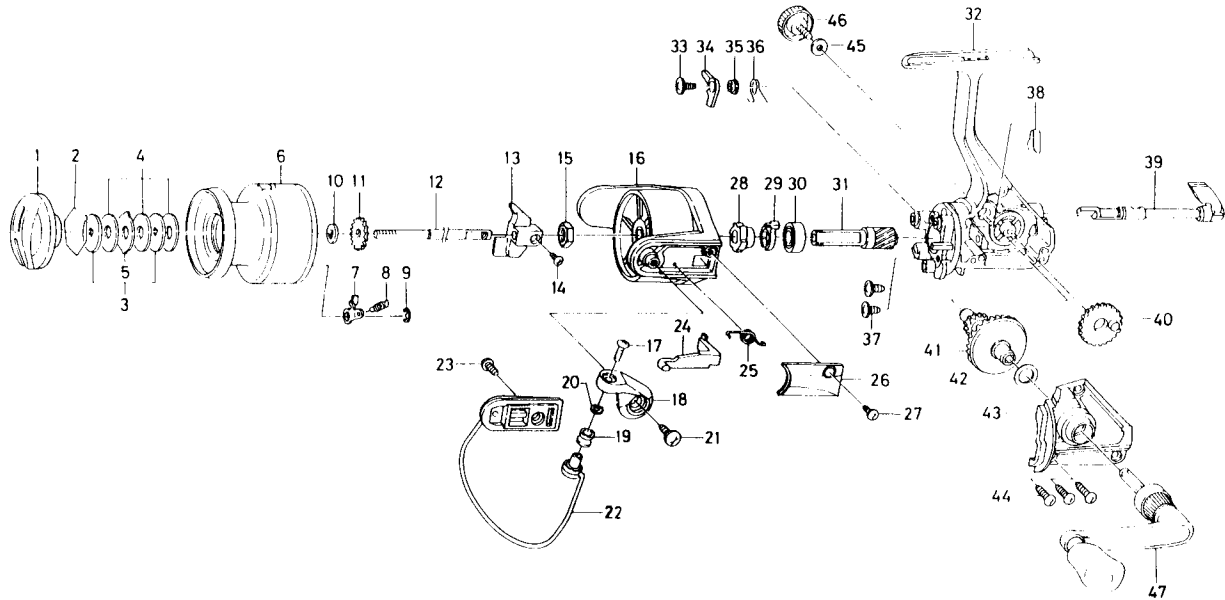


# SPINNING REEL — BW1300X



Key No. 2-9

E51-5801 Spool assembly 15.00

**Key**

Key No.	Part No.	Part Name	Price
1	F10-7403	Drag knob	3.75
2	171-7701	Drag washer retainer	.35
3	E46-7201	Key washer	.80
4	E13-6003	Drag washer	1.60
5	373-3603	Eared washer	.60
6	E51-5701	Spool assembly	N/A
7	B07-5304	Click pawl	.70
8	E40-3101	Click spring	.70
9	320-5901	Click retainer	.50
10	E46-7101	Spool washer	.60
11	270-6501	Click gear	.60
12	E48-4301	Main shaft	1.90
13	E45-1401	Oscillating slider	.70
14	351-0315	Oscillating slider screw	.50
15	341-9201	Rotor nut	.55
16	F10-4201	Rotor	2.95
17	B67-9304	Line roller screw	.40
18	E45-1701	Bail arm	1.20
19	L01-8201	Line roller	.90
20	B55-4301	Line roller washer	.40
21	E00-7101	Bail arm screw	.45
22	E48-7201	Bail assembly	3.70
23	L01-1702	Bail trip cam screw	.35
24	E45-1601	Bail trip lever	.90

**Key**

Key No.	Part No.	Part Name	Price
25	F12-8901	Bail spring	.60
26	F08-8401	Bail spring cover	.60
27	E36-4202	Bail spring cover screw	.60
28	L01-4001	Anti-reverse ratchet	.70
29	E38-5501	Anti-reverse pawl spring A	1.90
30	L03-6601	Ball bearing	7.10
31	E30-3401	Pinion gear	1.75
32	F10-5402	Body assembly	5.85
33	L00-1801	Anti-reverse pawl screw	.35
34	L01-4401	Anti-reverse pawl	.75
35	L01-4302	Anti-reverse pawl collar	.55
36	L00-1501	Anti-reverse pawl spring B	.60
37	E03-7801	Bearing retainer screw	.60
38	E32-7801	Anti-reverse cam spring	.70
39	F08-5106	Anti-reverse lever	2.25
40	E45-1301	Oscillating gear	.75
41	F08-4801	Drive gear	2.50
42	373-7802	Drive gear washer	.40
43	F10-5502	Side cover	2.65
44	B83-5002	Side cover screw	.60
45	B92-4902	Handle lock washer	.35
46	B92-5001	Handle lock screw	.80
47	E49-3801	Handle assembly	6.15