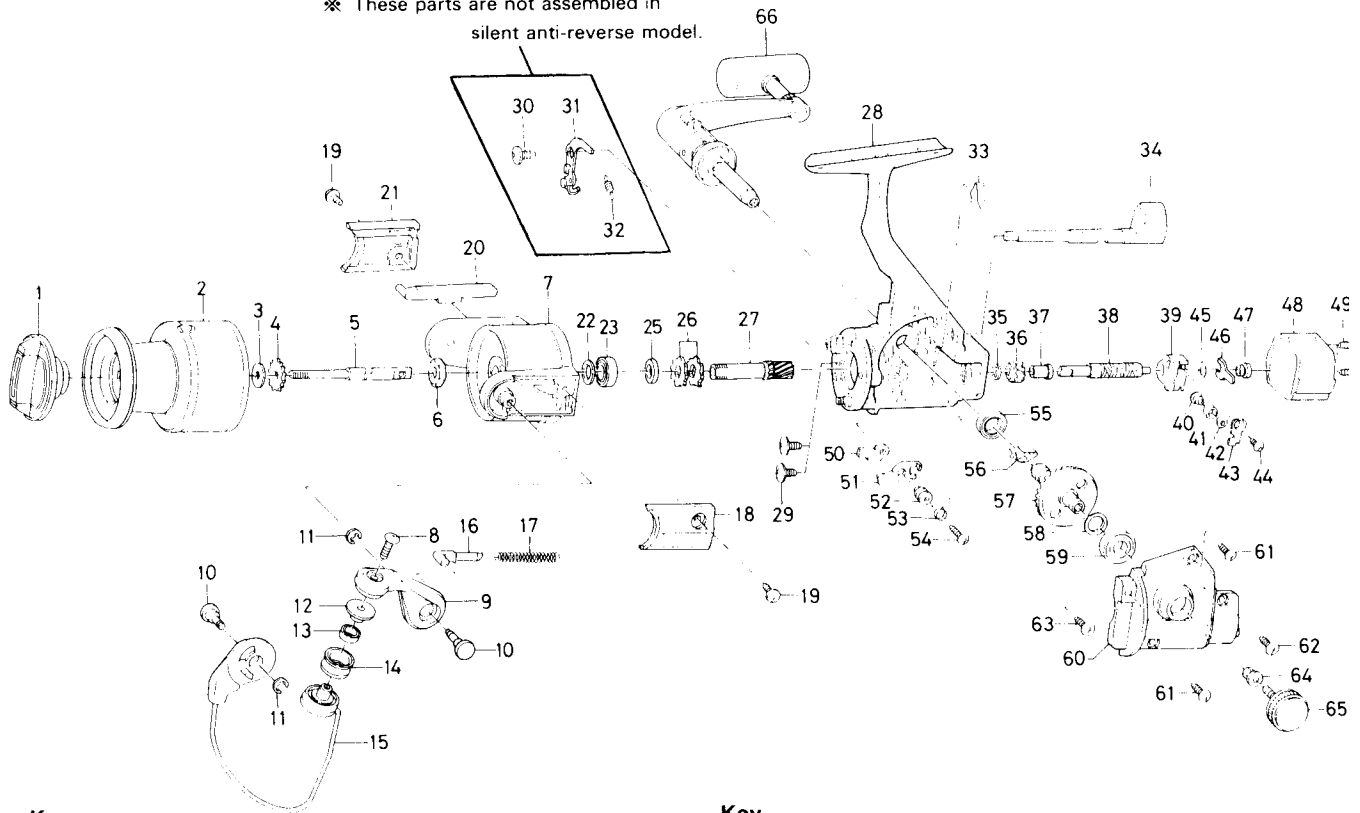


SPINNING REEL — SS600

※ These parts are not assembled in
silent anti-reverse model.



Key No.	Part No.	Part Name	Price
1	E36-8901	Drag knob	6.60
2	E44-7801	Spool	N/A *
3	E39-4001	Spool washer	.60
4	E36-5301	Click gear	.60
5	E37-2302	Main shaft	2.10
6	341-9201	Rotor nut	.55
7	E36-8104	Rotor	5.80
8	B67-9305	Line roller screw	.45
9	F07-3801	Bail arm	1.40
10	E37-1701	Bail arm screw	1.10
11	320-5901	Bail arm screw retainer	.50
12	F06-6301	Line roller collar	1.50
13	F05-5601	Ball bearing A	9.25
14	F05-8901	Line roller	2.75
15	F08-1901	Bail	8.30
16	E68-8201	Bail spring shaft	.70
17	E41-7701	Bail spring	.70
18	E36-8304	Bail spring cover	1.90
19	E36-4201	Bail spring cover screw	.60
20	E36-8401	Bail trip lever	1.25
21	E36-8506	Bail trip cover	1.90
22	375-8503	Bearing washer	.60
23	637-5701	Ball bearing B	6.95
25	E29-6101	Spacing sleeve	.70
26	E27-1501	Anti-reverse ratchet	.75
27	E42-0002	Pinion gear	6.75
28	F08-1601	Body	14.50
29	E03-7801	Bearing retainer screw	.60
33	E26-8701	Anti-reverse cam spring	.60
34	E36-3213	Anti-reverse lever	2.30
35	B33-9801	Worm shaft gear retainer	.35

Key No.	Part No.	Part Name	Price
36	E41-5801	Worm shaft gear	1.60
37	E29-6501	Worm shaft bush	.80
38	E41-9902	Worm shaft	7.25
39	F01-1003	Oscillating slider	3.70
40	E12-2403	Oscillating pawl	4.95
41	E12-4601	Oscillating pawl bush	2.10
42	375-0800	Oscillating pawl washer	.40
43	E11-6801	Oscillating slider cover	.80
44	E15-0203	Oscillating slider cover screw	.70
45	B53-6100	Worm shaft washer	.35
46	E29-6701	Worm shaft retainer	.80
47	E29-6601	Worm shaft collar	2.35
48	F01-0302	Rear cover	2.70
49	E24-8102	Rear cover screw	.60
50	B95-9301	Anti-reverse pawl plate	.70
51	E27-1301	Anti-reverse pawl	1.15
52	B95-9501	Anti-reverse pawl collar	.95
53	B95-9602	Anti-reverse pawl spring	.60
54	B00-8601	Anti-reverse pawl screw	.35
55	E30-6801	Ball bearing C	6.95
56	E29-6903	Anti-reverse pawl spring	1.40
57	F08-1701	Drive gear	9.60
58	375-8500	Drive gear washer	.45
59	637-5701	Ball bearing D	6.95
60	F08-1801	Left side cover	5.00
61	E15-8601	Left side cover screw A	.60
62	E15-8602	Left side cover screw B	.60
63	E13-0501	Left side cover screw C	.60
64	501-8501	Handle collar	.70
65	F03-5602	Handle lock screw	1.65
66	F08-2101	Handle assembly	12.40