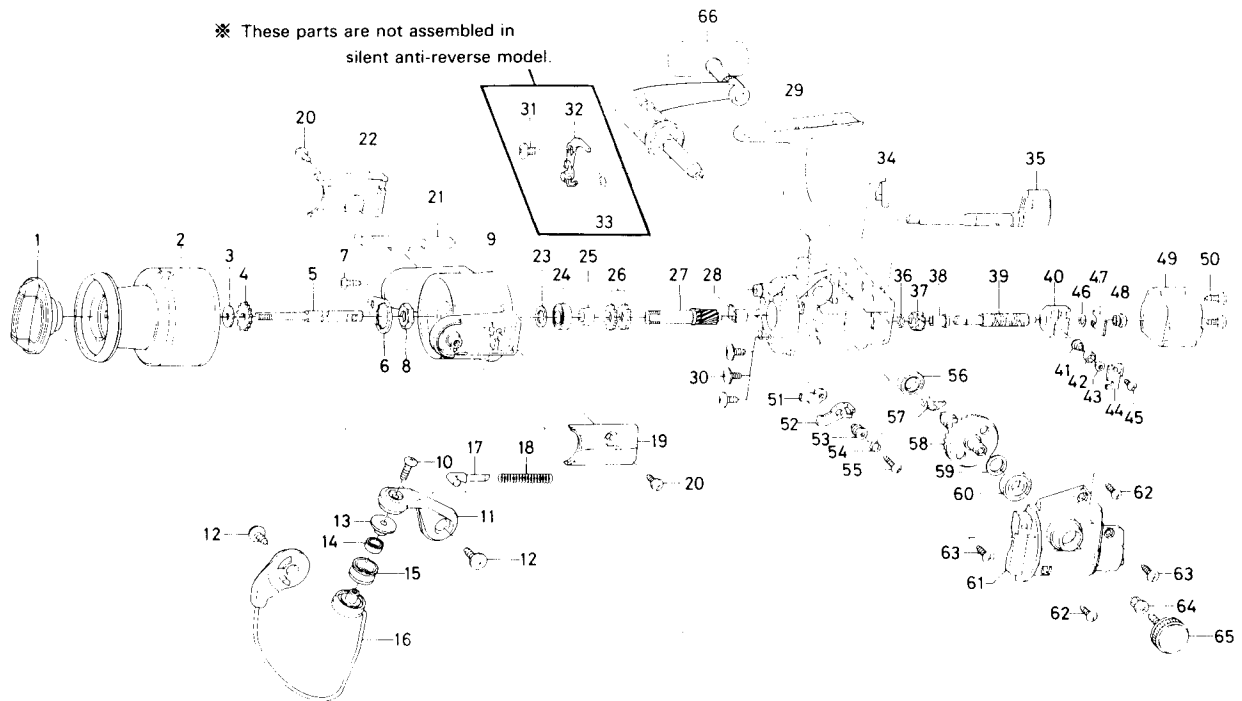


SPINNING REEL — SS850



Key No.	Part No.	Part Name	Price
1	E37-8801	Drag knob	6.80
2	E44-9901	Spool	N/A*
3	E39-7901	Spool washer	.60
4	E41-3101	Click gear	.60
5	E37-7002	Main shaft	2.60
6	B66-2601	Rotor nut holding plate	1.10
7	B93-3001	Rotor nut holding plate screw	.45
8	B10-5701	Rotor nut	.65
9	F01-1104	Rotor	7.25
10	B67-9305	Line roller screw	.45
11	F05-8201	Bail arm	1.40
12	E00-7102	Bail arm screw	.45
13	F06-6301	Line roller collar	1.50
14	F05-5601	Ball bearing A	9.25
15	F05-8901	Line roller	2.75
16	F08-3401	Bail	8.60
17	E36-4401	Bail spring shaft	.70
18	E39-0601	Bail spring	.60
19	E37-7904	Bail spring cover	1.90
20	E36-4201	Bail spring cover screw	.60
21	F01-1601	Bail trip lever	1.65
22	E37-8205	Bail trip cover	1.90
23	371-2827	Bearing washer	.60
24	635-4801	Ball bearing B	8.35
25	F08-3201	Spacing sleeve	1.10
26	E37-6701	Anti-reverse ratchet	.70
27	E44-6901	Pinion gear	11.50
28	B88-0001	Pinion holder	.90
29	F08-3101	Body	17.20
30	E03-7801	Bearing retainer screw	.60
34	E26-8701	Anti-reverse cam spring	.60
35	E37-6001	Anti-reverse lever	1.70

Key No.	Part No.	Part Name	Price
36	320-5901	Worm shaft gear retainer	.50
37	E44-8201	Worm shaft gear	5.65
38	E45-1101	Worm shaft bush	.90
39	E37-6402	Worm shaft	8.00
40	E37-6301	Oscillating slider	3.70
41	E19-1202	Oscillating pawl	4.55
42	E19-1301	Oscillating pawl bush	2.80
43	375-0800	Oscillating pawl washer	.40
44	E37-6901	Oscillating slider cover	.90
45	E40-1501	Oscillating slider cover screw	.70
46	F35-4100	Worm shaft washer	.30
47	E36-3801	Worm shaft retainer	.70
48	E39-3601	Worm shaft collar	1.10
49	E37-7602	Rear cover	2.80
50	E24-8102	Rear cover screw	.60
51	B96-5301	Anti-reverse pawl plate	.75
52	E27-7002	Anti-reverse pawl	1.70
53	B96-5501	Anti-reverse pawl collar	.95
54	B96-5601	Anti-reverse pawl spring A	.70
55	B00-9701	Anti-reverse pawl screw	.45
56	B86-1701	Ball bearing C	8.50
57	E37-7202	Anti-reverse pawl spring B	1.40
58	E44-7001	Drive gear	12.30
59	373-7800	Drive gear washer	.40
60	E15-4001	Ball bearing D	6.85
61	F08-3301	Left side cover	5.50
62	E15-8601	Left side cover screw A	.60
63	E15-8602	Left side cover screw B	.60
64	E12-7501	Handle collar	.90
65	F03-5602	Handle lock screw	1.65
66	F08-3601	Handle assembly	14.50