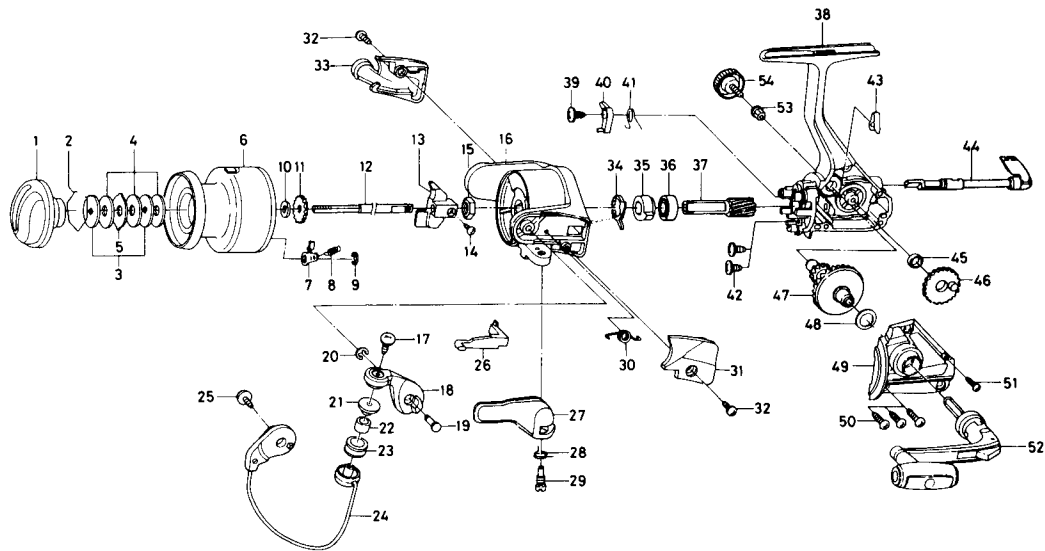


# SPINING REEL REGAL-S3505B



Key NO.	Parts No.	Parts Name	Key NO.	Parts No.	Parts Name
2-9	F32-9301	Spool assembly	28	E36-9901	Trigger spring
1	F32-9501	Drag knob	29	E41-7801	Trigger screw
2	171-7701	Drag washer retainer	30	F12-8901	Bail spring
3	F09-4901	Key washer	31	F31-4501	Bail spring cover
4	E13-6003	Drag washer	32	E24-8101	Bail spring cover screw
5	373-3603	Eared washer	33	F31-4601	Bail trip cover
6	F32-9401	Spool assembly	34	E46-2001	Anti-reverse pawl spring A
7	B07-5304	Click pawl	35	F11-1301	Anti-reverse ratchet
8	E40-3101	Click spring	36	L03-6502	Ball bearing
9	320-5901	Click retainer	37	E52-0101	Pinion gear
10	F09-4701	Spool washer	38	F32-9002	Body assembly
11	E46-2701	Click gear	39	E00-7101	Anti-reverse pawl screw
12	E48-5301	Main shaft	40	E46-1302	Anti-reverse pawl
13	F09-1301	Oscillating slider	41	E46-1201	Anti-reverse pawl spring B
14	352-1502	Oscillating slider screw	42	E03-7801	Bearing retainer screw
15	340-6602	Rotor nut	43	E32-7801	Anti-reverse cam spring
16	F33-3501	Rotor	44	F08-5124	Anti-reverse lever
17	B67-9304	Line roller screw	45	F13-1601	Oscillating gear collar
18	F17-9802	Bail arm	46	E46-1501	Oscillating gear
19	E49-3501	Bail arm screw	47	E52-0201	Drive gear
20	320-5901	Bail arm screw retainer	48	373-7802	Drive gear washer
21	F06-6301	Line roller collar	49	F32-9102	Side cover
22	E50-5901	Line roller bushing	50	B83-5002	Side cover screw A
23	E50-6001	Line roller	51	E15-8602	Side cover screw B
24	F33-3601	Bail assembly	52	F33-5301	Handle assembly
25	B84-2102	Bail trip cam screw	53	E12-7501	Handle collar
26	E46-2101	Bail trip lever	54	B92-5001	Handle lock screw
27	F18-0002	Trigger lever			