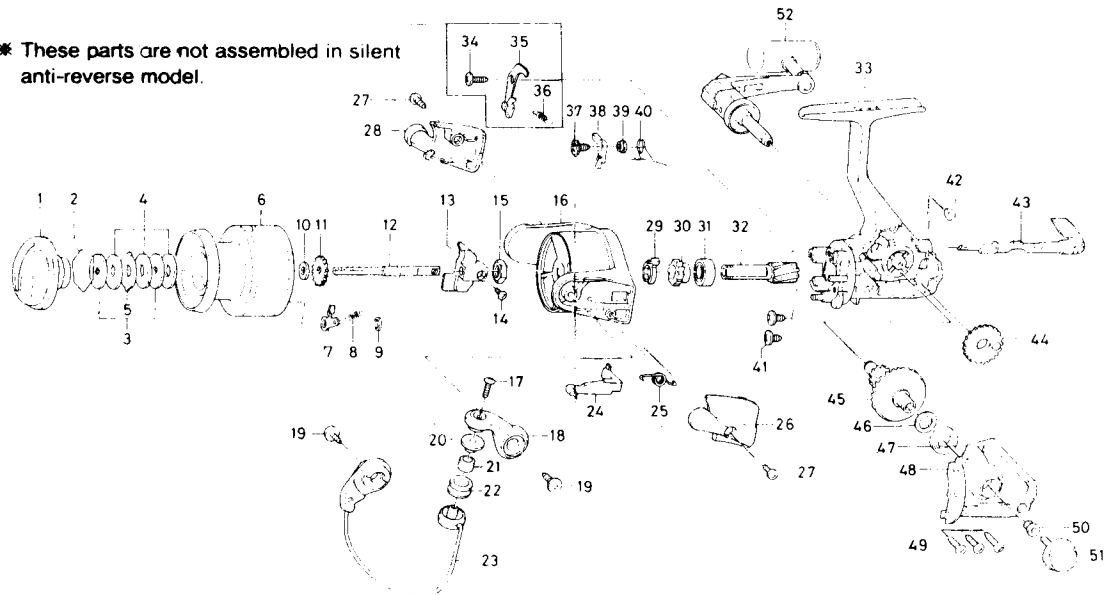


SPINNING REEL REGAL-X1500-2B

* These parts are not assembled in silent anti-reverse model.



Key NO.	Parts No.	Parts Name	Key NO.	Parts No.	Parts Name
2-9	F33-0601	Spool assembly	28	F32-6302	Bail trip cover
1	F32-8502	Drag knob	29	F12-2101	Anti-reverse pawl spring A
2	F37-3301	Drag washer retainer	30	F32-7701	Anti-reverse ratchet
3	E46-7201	Key washer	31	634-1301	Bail bearing
4	E13-6001	Drag washer	32	F12-1601	Pinion gear
5	373-3603	Eared washer	33	F33-0801	Body assembly
6	F33-0701	Spool assembly	37	F12-5701	Anti-reverse pawl screw
7	B07-5304	Click pawl	38	F12-1901	Anti-reverse pawl
8	E40-3101	Click spring	39	F12-3501	Anti-reverse pawl collar
9	320-5901	Click retainer	40	F12-3401	Anti-reverse pawl spring B
10	E46-7101	Spool washer	41	E03-7801	Bearing retainer screw
11	270-6501	Click gear	42	F12-2001	Anti-reverse cam spring
12	E49-8401	Main shaft	43	F08-5104	Anti-reverse lever
13	F12-2301	Oscillating slider	44	F12-2201	Oscillating gear
14	351-0311	Oscillating slider screw	45	F12-1501	Drive gear
15	341-9201	Rotor nut	46	375-8502	Drive gear washer
16	F32-7802	Rotor	47	634-1301	Ball bearing
17	B67-9306	Line roller screw	48	F33-0401	Side cover
18	F32-3002	Bail arm	49	E15-8602	Side cover screw
19	B84-2102	Bail arm screw	50	501-8501	Handle collar
20	F06-6301	Line roller collar	51	B92-5004	Handle lock screw
21	F31-6801	Line roller bushing	52	F33-0501	Handle assembly
22	E50-6001	Line roller			
23	F32-8002	Bail assembly			
24	E49-6401	Bail trip lever			
25	E49-6801	Bail spring			
26	F32-4202	Bail spring cover			
27	E24-8101	Bail spring cover screw			