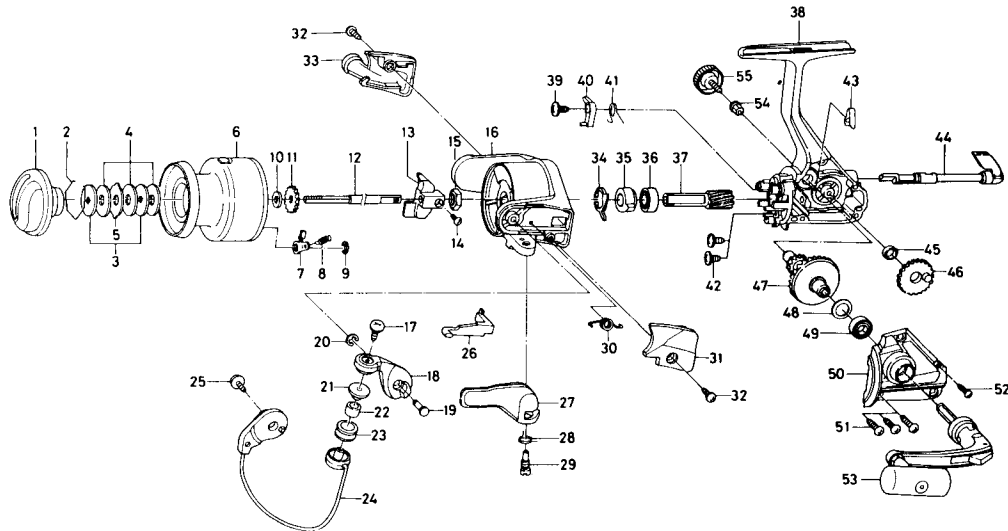


# SPINNING REEL REGAL-X3505-2B



Key NO.	Parts No.	Parts Name	Key NO.	Parts No.	Parts Name
2-9	E52-0504	Spool assembly	31	F31-4502	Bail spring cover
1	F32-9502	Drag knob	32	E24-8101	Bail spring cover screw
2	171-7701	Drag washer retainer	33	F31-4602	Bail trip cover
3	F09-4901	Key washer	34	E46-2001	Anti-reverse pawl spring A
4	E13-6003	Drag washer	35	F11-1301	Anti-reverse ratchet
5	373-3603	Eared washer	36	L03-6502	Bail bearing A
6	E52-0602	Spool assembly	37	E52-0101	Pinion gear
7	B07-5304	Click pawl	38	F33-2902	Body assembly
8	E40-3101	Click spring	39	E00-7101	Anti-reverse pawl screw
9	320-5901	Click retainer	40	E46-1302	Anti-reverse pawl
10	F09-4701	Spool washer	41	E46-1201	Anti-reverse pawl spring B
11	E46-2701	Click gear	42	E03-7801	Bearing retainer screw
12	E48-5301	Main shaft	43	E32-7801	Anti-reverse cam spring
13	F09-1301	Oscillating slider	44	F08-5109	Anti-reverse lever
14	352-1502	Oscillating slider screw	45	F13-1601	Oscillating gear collar
15	340-6602	Rotor nut	46	E46-1501	Oscillating gear
16	F33-3502	Rotor	47	E52-0201	Drive gear
17	B67-9304	Line roller screw	48	373-7802	Drive gear washer
18	F17-9801	Bail arm	49	631-6901	Ball bearing B
19	E49-3501	Bail arm screw	50	F33-3002	Side cover
20	320-5901	Bail arm screw retainer	51	B83-5002	Side cover screw A
21	F06-6301	Line roller collar	52	E15-8602	Side cover screw B
22	E50-5901	Line roller bushing	53	F33-5401	Handle assembly
23	E50-6001	Line roller	54	E12-7501	Handle collar
24	F33-3602	Bail assembly	55	B92-5001	Handle lock screw
25	B84-2102	Bail trip cam screw			
26	E46-2101	Bail trip lever			
27	F18-0001	Trigger lever			
28	E36-9901	Trigger spring			
29	E37-0003	Trigger screw			
30	F12-8901	Bail spring			