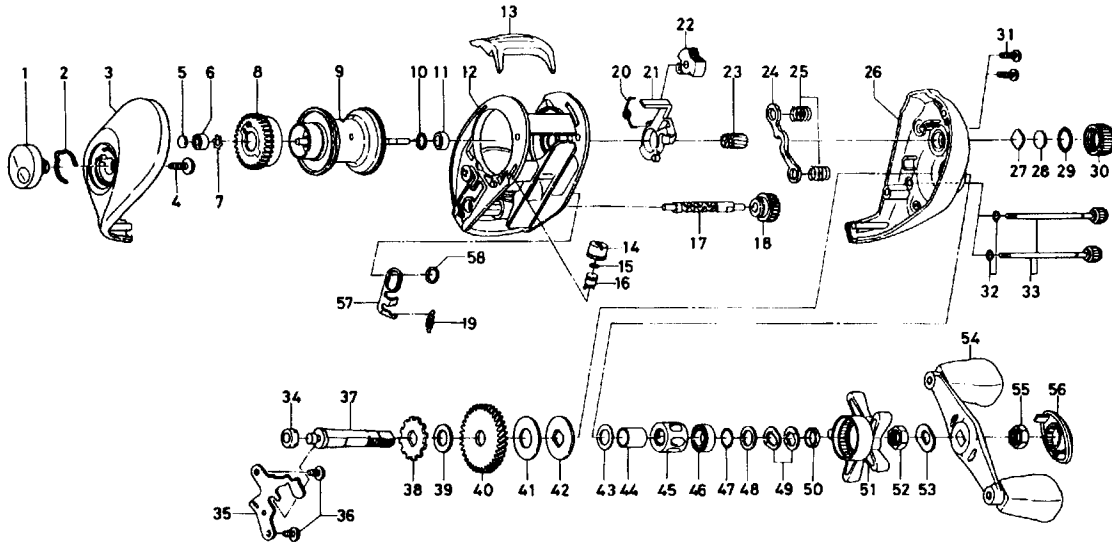


# BAITCASTING REEL PROCASTER PR-S150i



Key No.	Parts No.	Parts Name	Key No.	Parts No.	Parts Name
1	F40-3605	Brake adjusting knob	33	891-1726	Right side plate screw
2	F03-2401	Brake click spring	34	B55-0301	Bushing B
3	F40-3305	Left side plate	35	F43-9701	Drive shaft retainer
4	B84-2102	Brake adjusting knob screw	36	F21-2201	Drive shaft retainer screw
5	374-9102	Spacer A	37	F41-1201	Drive shaft
6	F40-3701	Bushing A	38	E32-7701	Anti-reverse ratchet
7	F41-2301	Bearing retainer	39	375-7103	Drive shaft washer
8	E23-9501	Magnet holder	40	F40-2501	Drive gear
9	F43-4301	Spool assembly	41	B36-0209	Drag washer
10	F45-0601	Bushing retainer	42	B36-0303	Key washer
11	B35-8601	Ball bearing A	43	E42-5401	Spacing sleeve A
12	F43-4501	Frame assembly	44	F40-7901	Gear shaft collar
13	F40-2005	Clutch lever	45	F40-8001	Roller clutch
14	F40-2801	Pawl cap	46	F05-5501	Ball bearing B
15	375-0801	Line guide washer	47	B55-3801	Bearing washer A
16	121-4214	Line guide pawl	48	373-7810	Bearing washer B
17	E45-1201	Worm shaft	49	150-8901	Drag spring washer
18	F06-1301	Worm shaft gear	50	B97-4901	Spacing sleeve B
19	144-2501	Clutch trip plate spring	51	F40-3202	Star drag
20	E24-9001	Clutch cam spring	52	B43-3601	Drag nut
21	E23-7401	Clutch cam	53	150-9001	Friction washer
22	E24-9102	Flipping/casting selector	54	F40-8101	Handle assembly
23	F40-9202	Pinion gear	55	B43-3601	Handle nut
24	E23-7701	Yoke	56	F40-8401	Handle nut retainer
25	E16-7101	Yoke spring	57	F42-8801	Clutch trip plate
26	F40-7807	Right side plate	58	F44-0201	Clutch trip plate washer
27	B17-5401	Spool adjusting cap metal			
28	B17-5503	Spacer B			
29	171-5201	"O" ring A			
30	F40-3002	Cast control cap			
31	E33-0401	Set plate screw			
32	B85-3101	"O" ring B			