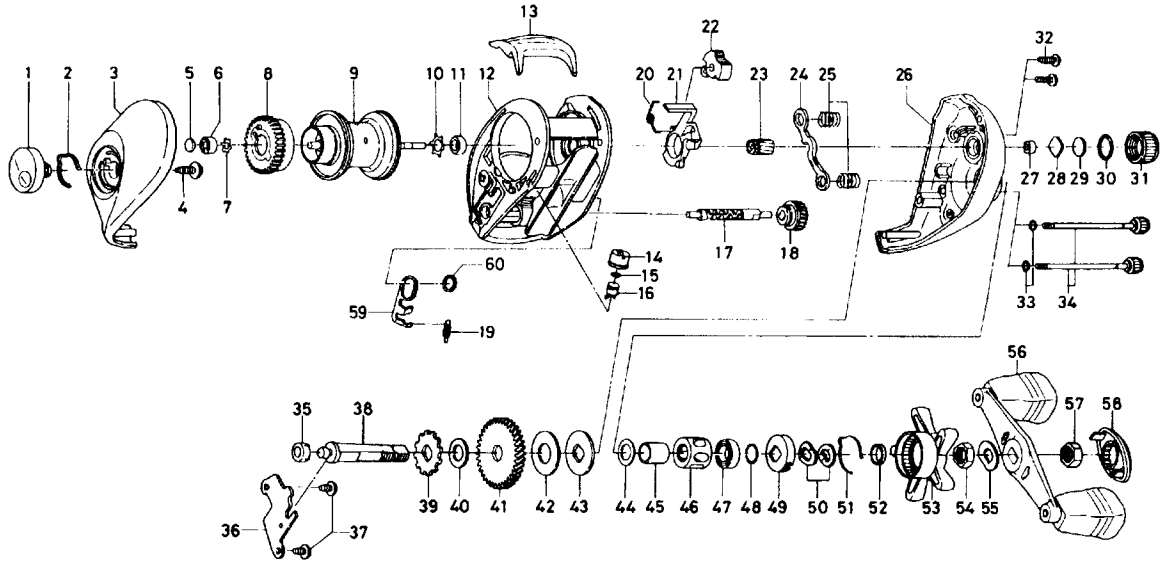


# BAITCASTING REEL PROCASTER PR-X153i



Key No.	Parts No.	Parts Name	Key No.	Parts No.	Parts Name
1	F40-3603	Brake, adjusting knob	33	B85-3101	"O" ring B
2	F03-2401	Brake click spring	34	B91-1727	Right side plate screw
3	F40-3303	Left side plate	35	B35-8601	Ball bearing D
4	B84-2102	Brake adjusting knob screw	36	F43-9701	Drive shaft retainer
5	374-9102	Spacer A	37	F21-2201	Drive shaft retainer screw
6	E08-8001	Ball bearing A	38	F41-1201	Drive shaft
7	F41-2301	Bearing retainer A	39	E32-7701	Anti-reverse ratchet
8	E23-9501	Magnet holder	40	375-7103	Drive shaft washer
9	F40-8501	Spool assembly	41	F40-2501	Drive gear
10	F45-0601	Bearing retainer B	42	B36-0209	Drag washer
11	B35-8601	Ball bearing B	43	B36-0303	Key washer
12	F40-8801	Frame assembly	44	E42-5401	Spacing sleeve A
13	F40-2003	Clutch lever	45	F40-7901	Gear shaft collar
14	F40-2801	Pawl cap	46	F40-8001	Roller clutch
15	375-4101	Line guide washer	47	F05-5501	Ball bearing E
16	121-4214	Line guide pawl	48	B55-3801	Bearing washer
17	E45-1201	Worm shaft	49	F02-8201	Click leaf spring holder
18	F06-1301	Worm shaft gear	50	150-8901	Drag spring washer
19	144-2501	Clutch trip plate spring	51	F03-2401	Click leaf spring
20	E24-9001	Clutch cam spring	52	B97-4901	Spacing sleeve B
21	E23-7401	Clutch cam	53	F40-3203	Star drag
22	E24-9103	Flipping/casting selector	54	B43-3601	Drag nut
23	F40-9202	Pinion gear	55	150-9001	Friction washer
24	E23-7701	Yoke	56	F40-8901	Handle assembly
25	E16-7101	Yoke spring	57	B43-3601	Handle nut
26	F40-7810	Right side plate	58	F40-8402	Handle nut retainer
27	E24-8501	Ball bearing C	59	F42-8801	Clutch trip plate
28	B17-5401	Spool adjusting cap metal	60	F44-0201	Clutch trip plate washer
29	B17-5503	Spacer B			
30	171-5201	"O" ring A			
31	F40-3003	Cast control cap			
32	E33-0401	Set plate screw			