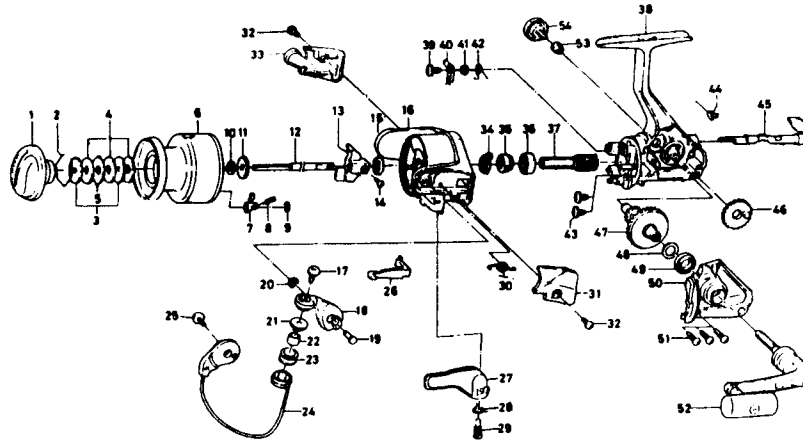


SPINNING REEL REGAL RG-X1505-2B/REG-X2005-2B



Key No.	Parts No.	Parts Name	Key No.	Parts No.	Parts Name
2-9	F33-0601	Spool assembly (ALUMINUM SPOOL)	35	E49-8501	Anti-reverse ratchet
1	F32-8502	Drag knob	36	634-1301	Ball bearing A
2	F37-3301	Drag washer retainer	37	F12-1601	Pinion gear
3	E46-7201	Key washer	38	F33-0802	Body assembly
4	E13-6001	Drag washer	39	F12-5701	Anti-reverse pawl screw
5	373-3603	Eared washer	40	F12-1901	Anti-reverse pawl
6	F33-0701	Spool assembly	41	F12-3501	Anti-reverse pawl collar
7	B07-5304	Click pawl	42	F12-3401	Anti-reverse pawl spring B
8	E40-3101	Click spring	43	E03-7801	Bearing retainer screw
9	320-5901	Click retainer	44	F12-2001	Anti-reverse cam spring
10	E46-7101	Spool washer	45	F08-5104	Anti-reverse lever
11	270-6501	Click gear	46	F12-2201	Oscillating gear
12	E49-8401	Main shaft	47	F12-1501	Drive gear
13	F12-2301	Oscillating slider	48	375-8501	Drive gear washer
14	351-0311	Oscillating slider screw	49	634-1301	Ball bearing B
15	341-9201	Rotor nut	50	F33-0402	Side cover
16	F33-1402	Rotor assembly	51	E15-8602	Side cover screw
17	B67-0306	Line roller screw	52	F33-0501	Handle assembly
18	F17-3101	Bail arm	53	F40-4801	Handle collar
19	E49-3501	Bail arm screw	54	B92-5004	Handle lock screw
20	320-5901	Bail arm screw retainer	2-9	F19-9604	Spool assembly (EXTRA SPOOL)
21	F06-6301	Line roller collar	X2005-28 Special Parts		
22	F31-6801	Line roller bushing	2-9	F33-2301	Spool assembly (ALUMINUM SPOOL)
23	E50-6001	Line roller	2-9	F40-5701	Spool assembly (EXTRA SPOOL)
24	F33-1502	Bail assembly	16	F39-9802	Rotor assembly
25	BB4-2102	Bail trip cam screw	24	F40-0002	Sail asset
26	E49-C401	Bail trip lever	26	E49-6501	Bail trip lever
27	E49-3403	Trigger lever	38	F33-0803	Body assembly
28	F43-6401	Trigger spring	50	F33-0404	Side cover
29	E37-0002	Trigger screw			
30	E49-6801	Bail spring			
31	F32-4102	Bail spring cover			
32	E24-8101	Bail spring cover screw			
33	F32-6502	Bail trip cover			
34	F12-2101	Anti-reverse pawl spring A			