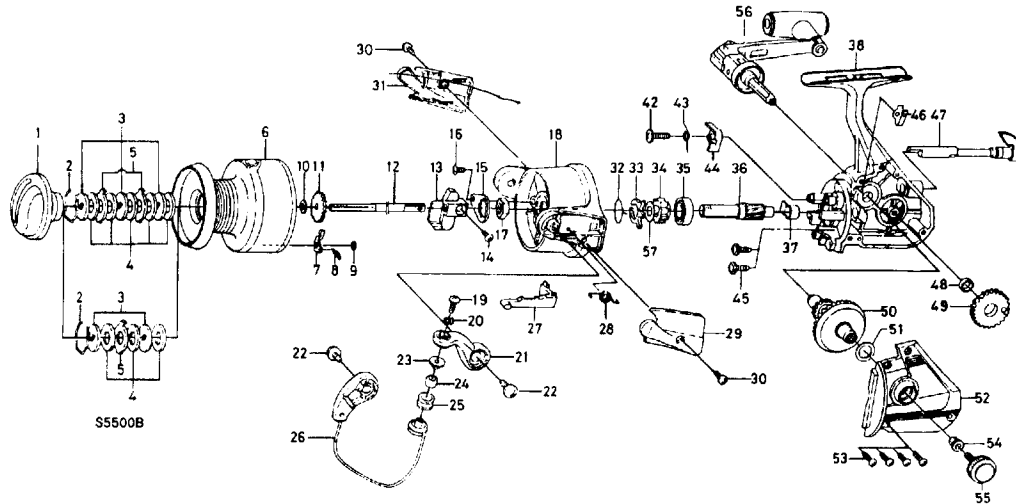


SPINNING REEL REGAL RG-S5500B/RG-S6000B



Key No.	Parts No.	Parts Name	Key No.	Parts No.	Parts Name
2-9	E53-4201	Spool assembly	33	L07-0701	Anti-reverse pawl spring B
1	F36-9801	Drag knob	34	F39-4201	Anti-reverse ratchet
2	171-7701	Drag washer retainer	35	L03-6401	Ball bearing
3	L03-1301	Key washer	36	L11-4401	Pinion gear
4	373-3712	Drag washer	37	L00-6001	Pinion collar
5	B89-9501	Eared washer	38	E53-4401	Body assembly
6	E53-4301	Spool assemble	42	L06-6501	Anti-reverse pawl screw
7	B07-8201	Click pawl	43	L06-6401	Anti-reverse pawl spring C
8	145-2101	Click spring	44	L07-8601	Anti-reverse pawl
9	320-1402	Click retainer	45	L01-1601	Rearing retainer screw
10	F22-5501	Spool washer	46	E01-1801	Anti-reverse cam spring
11	L11-8501	Click gear	47	L10-0713	Anti-reverse lever
12	F42-9501	Main shaft	48	B47-4101	Oscillating gear collar
13	F42-9101	Oscillating slider	49	L11-4701	Oscillating gear
14	351-8901	Oscillating slider screw	50	L07-1701	Drive gear
15	B02-1601	Rotor nut holding plate	51	371-2821	Drive gear washer
16	L01-1702	Rotor nut holding plate screw	52	E53-4101	Side cover
17	340-8301	Rotor nut	53	B83-5002	Side cover screw
18	F39-4401	Rotor assembly	54	501-8401	Handle collar
19	E45-4002	Line roller screw	55	L00-9102	Handle lock screw
20	160-8401	Lock washer	56	L05-8502	Handle assembly
21	F39-4301	Bail arm	57	F43-1001	Ratchet washer
22	E00-7601	Bail arm screw			
23	F08-8301	Line roller collar			
24	F44-9901	Line roller bushing			
25	E50-6001	Line roller			
26	F39-3801	Bail assembly			
27	F41-3401	Bail trip lever			
28	F43-6401	Bail spring			
29	F39-3301	Bail spring cover			
30	E24-8101	Bail spring cover screw			
31	F39-3401	Bail trip cover			
32	F21-2001	Anti-reverse pawl spring A			

RG-S6000B Special Parts					
2-9	E53-4501	Spool assembly			
18	F39-4701	Rotor assembly			
26	F39-4001	Bail assembly			
27	F39-3501	Bail trip lever			
38	E53-4402	Body assemble			
52	E53-4104	Side cover			