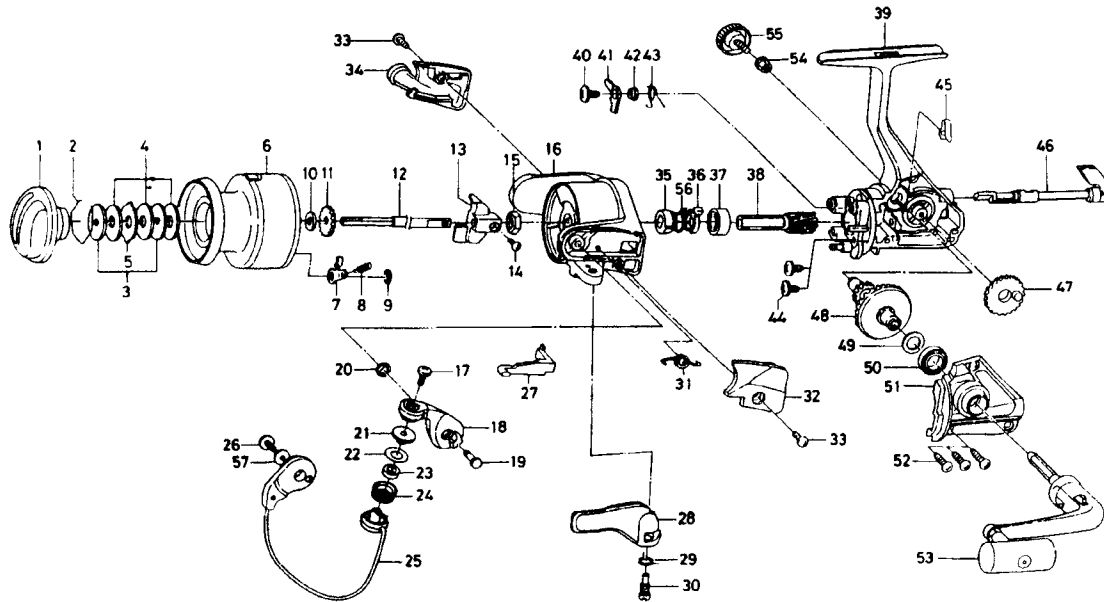


SPINNING REEL

REGAL-X2505T



Key No.	Parts No.	Parts Name	Key No.	Parts No.	Parts Name
2-9	F49-3001	Spool assembly	31	F12-8901	Bail spring
1	F42-0906	Drag knob	32	F31-0506	Bail spring cover
2	F37-3301	Drag washer retainer	33	E36-4202	Bail spring cover screw
3	E46-7201	Key washer	34	F31-0606	Bail trip cover
4	E13-6001	Drag washer	35	E49-2402	Anti-reverse ratchet
5	373-3603	Eared washer	36	F37-5101	Spring holder
6	F49-3103	Spool assembly	37	L03-6601	Ball bearing A
7	B07-5304	Click pawl	38	E51-9801	Pinion gear
8	E40-3101	Click spring	39	F49-2702	Body assembly
9	320-5901	Click retainer	40	L00-1801	Anti-reverse pawl screw
10	E46-7101	Spool washer	41	F37-5001	Anti-reverse pawl
11	270-6501	Click gear	42	L01-4302	Anti-reverse pawl collar
12	F45-4502	Main shaft	43	L00-1501	Anti-reverse pawl spring A
13	E45-1401	Oscillating slider	44	E03-7801	Bearing retainer screw
14	351-0315	Oscillating slider screw	45	E32-7801	Anti-reverse cam spring
15	341-9201	Rotor nut	46	F00-5120	Anti-reverse lever
16	F42-0806	Rotor assembly	47	E45-1301	Oscillating gear
17	B67-9308	Line roller screw	48	F17-0001	Drive gear
18	F45-2702	Bail arm	49	373-7805	Drive gear washer
19	E49-3501	Bail arm screw	50	631-6901	Ball bearing B
20	320-5901	Bail arm screw retainer	51	F49-2802	Side cover
21	F44-6302	Line roller collar	52	B83-5002	Side cover screw
22	F44-6201	Line roller washer	53	F49-9701	Handle assembly
23	F47-3401	Line roller bushing	54	F40-4801	Handle collar
24	F45-4902	Line roller	55	B92-5011	Handle lock screw
25	F49-4201	Bail assembly	56	F38-4701	Anti-reverse pawl spring B
26	B84-2102	Bail trip cam screw	57	F40-1001	Bail holder washer
27	E45-1601	Bail trip lever			
28	F18-0006	Trigger lever			
29	E36-9901	Trigger spring			
30	E41-7801	Trigger screw			