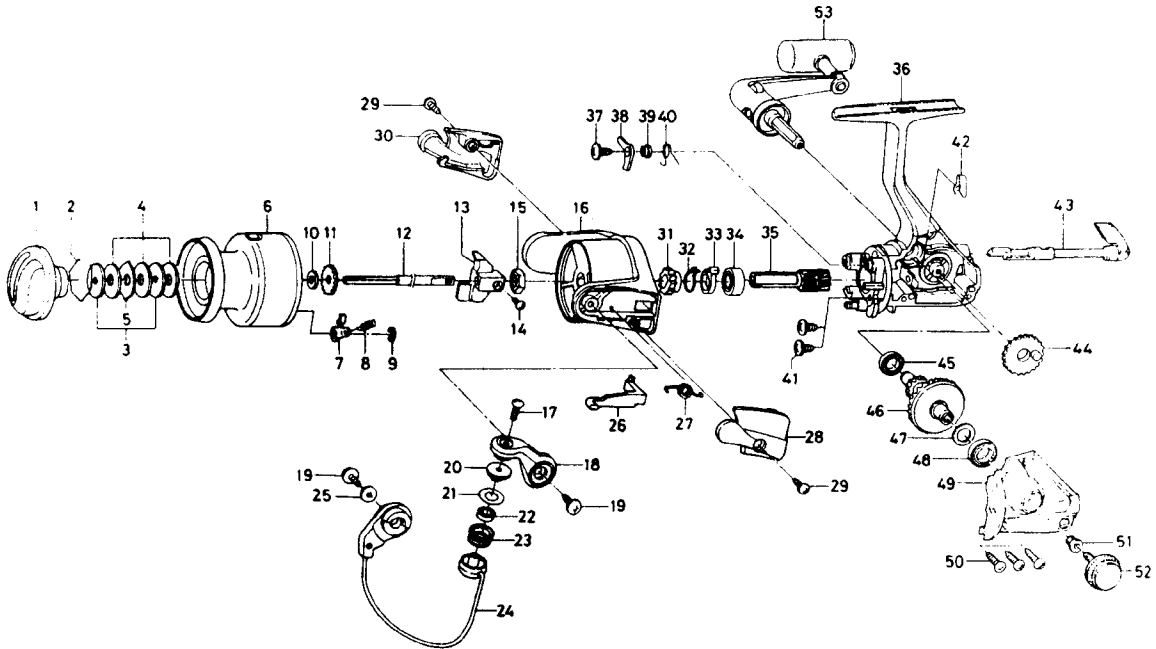


SPINNING REEL

REGAL-Z2500T



Key No.	Parts No.	Parts Name
2-9	F47-1401	Spool assembly
1	F42-0905	Drag knob
2	F37-3301	Drag washer retainer
3	E46-7201	Key washer
4	E13-6001	Drag washer
5	373-3603	Eared washer
6	F47-1801	Spool assembly
7	B07-5304	Click pawl
8	E40-3101	Click spring
9	320-5901	Click retainer
10	E46-7101	Spool washer
11	270-6501	Click gear
12	F45-4502	Main shaft
13	E45-1401	Oscillating slider
14	351-0315	Oscillating slider screw
15	341-9201	Rotor nut
16	F42-4704	Rotor assembly
17	B67-9308	Line roller screw
18	F45-2301	Bail arm
19	B84-2102	Bail arm screw
20	F44-6302	Line roller collar
21	F44-6201	Line roller washer
22	F05-5601	Ball bearing A
23	F45-4902	Line roller
24	F45-4701	Bail assembly
25	F40-1011	Bail holder washer
26	E45-1601	Bail trip lever
27	F12-8901	Bail spring
28	F31-0304	Bail spring cover
29	E36-4202	Bail spring cover screw
30	F35-2304	Bail top cover
31	F31-1502	Anti-reverse ratchet

Key No.	Parts No.	Parts Name
32	F38-4701	Anti-reverse pawl spring
33	F37-5101	Spring holder
34	L03-6601	Ball bearing B
35	E51-9801	Pinion gear
36	F46-1001	Body assembly
37	L00-1801	Anti-reverse pawl screw
38	F37-5001	Anti-reverse pawl
39	L01-4302	Anti-reverse pawl collar
40	L00-1501	Anti-reverse pawl spring
41	E03-7801	Bearing retainer screw
42	E32-7801	Anti-reverse cam spring
43	F08-5121	Anti-reverse lever
44	E45-1301	Oscillating gear
45	E30-6801	Ball bearing C
46	F17-0001	Drive gear
47	373-7805	Drive gear washer
48	631-6901	Ball bearing
49	F46-1801	Side cover
50	B83-5002	Side cover screw
51	F40-4801	Handle collar
S2	B92-5010	Handle lock screw
53	F49-9601	Handle assembly

SPECIAL PARTS MADE IN JAPAN

Key No.	Parts No.	Parts Name
35	F37-7501	Pinion gear
36	F45-4401	Body
54	E24-3301	Pinion collar