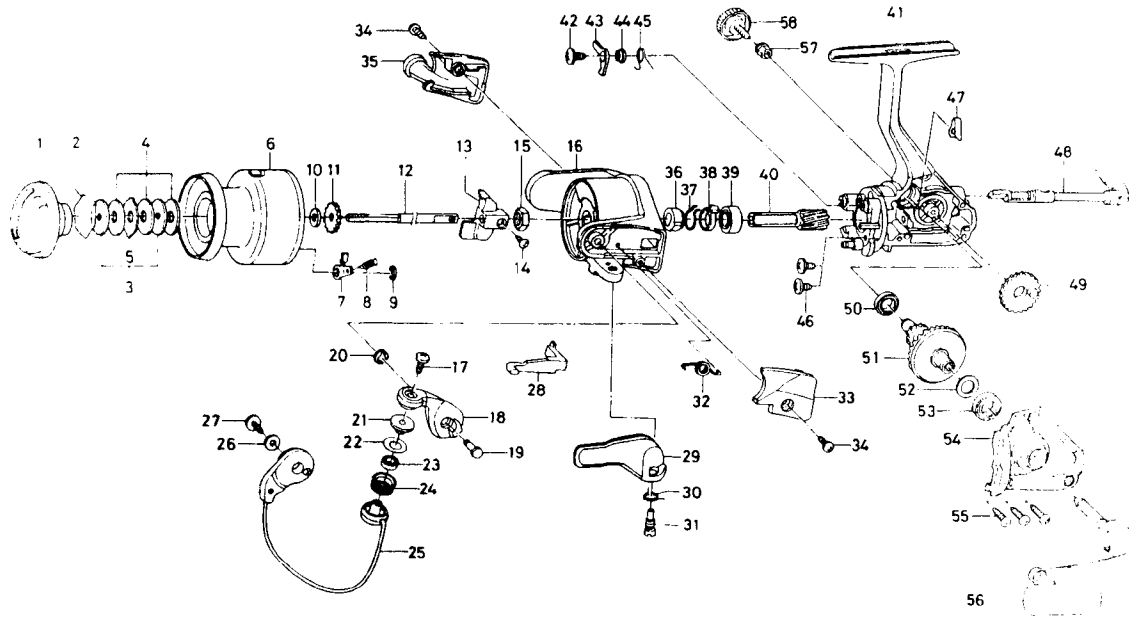


# SPINNING REEL

# REGAL-Z2505T



Key No.	Parts No.	Parts Name	Key No.	Parts No.	Parts Name
2-9	F47-1401	Spoof assembly	30	E36-9901	Trigger spring
1	F42-0905	Drag knob	31	E41-7801	Trigger screw
2	F37-3301	Drag washer retainer	32	F12-8901	Bail spring
3	E46-7201	Key washer	33	F31-0505	Bail spring cover
4	E13-6001	Drag washer	34	E36-4202	Bail spring cover screw
5	373-3603	Eared washer	35	F31-0605	Bail trip cover
6	F47-1801	Spoof assembly	36	E49-2402	Anti-reverse ratchet
7	B07-5304	Click pawl	37	F38-4701	Anti-reverse pawl spring
8	E40-3101	Click spring	38	F37-5101	Spring holder
9	320-5901	Click retainer	39	L03-6601	Ball bearing B
10	E46-7101	Spoof washer	40	E51-9801	Pinion gear
11	270-6501	Click gear	41	F46-1002	Body assembly
12	F45-4502	Main shaft	42	L00-1801	Anti-reverse pawl screw
13	E45-1401	Oscillating slider	43	F37-5001	Anti-reverse pawl
14	351-0315	Oscillating slider screw	44	L01-4302	Anti-reverse pawl collar
15	341-9201	Rotor nut	45	L00-1501	Anti-reverse pawl spring
16	F42-0805	Rotor assembly	46	E03-7801	Bearing retainer screw
17	B67-9308	Line roller screw	47	E32-7801	Anti-reverse cam spring
18	F45-2701	Bail arm	48	F08-5121	Anti-reverse lever
19	E49-3501	Bail arm screw	49	E45-1301	Oscillating gear
20	320-5901	Bail arm screw retainer	50	E30-6801	Ball bearing C
21	F44-6302	Line roller collar	51	F17-0001	Drive gear
22	F44-6201	Line roller washer	52	373-7805	Drive gear washer
23	F05-5601	Ball bearing A	53	631-6901	Ball bearing
24	F45-4902	Line roller	54	F46-1802	Side cover
25	F47-1601	Bail assembly	55	B83-5002	Side cover screw
26	F40-1001	Bail holder washer	56	F49-9601	Handle assembly
27	B84-2102	Bail trip cam screw	57	F40-4801	Handle collar
28	E45-1601	Bail trip lever	58	B92-5010	Handle lock screw
29	F18-0005	Trigger lever			