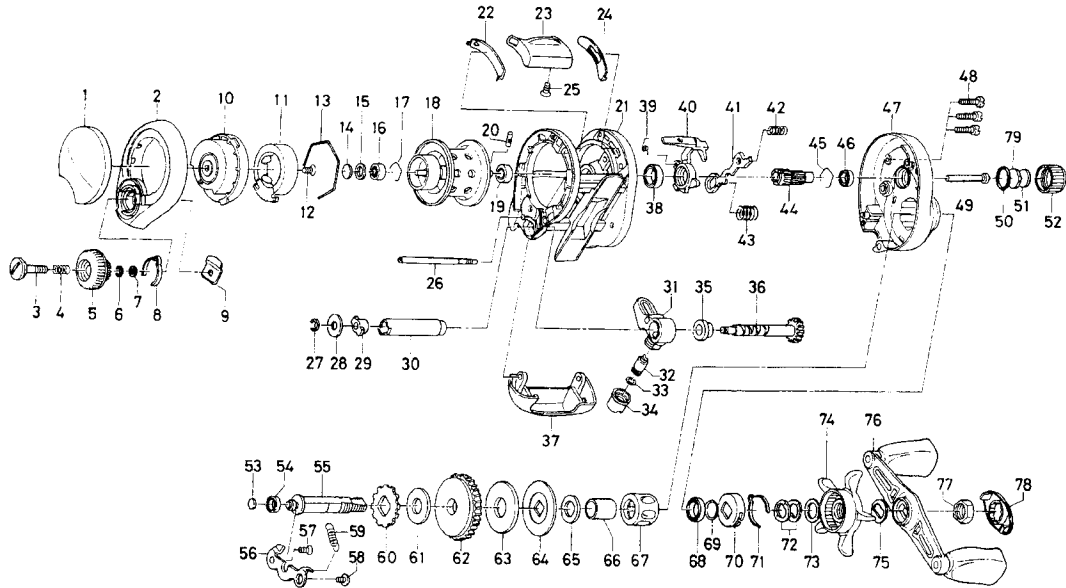


BAITCASTING REEL TD-X103HIA/X105HIA/X103PIA/X105PIA



TD-X103HIA

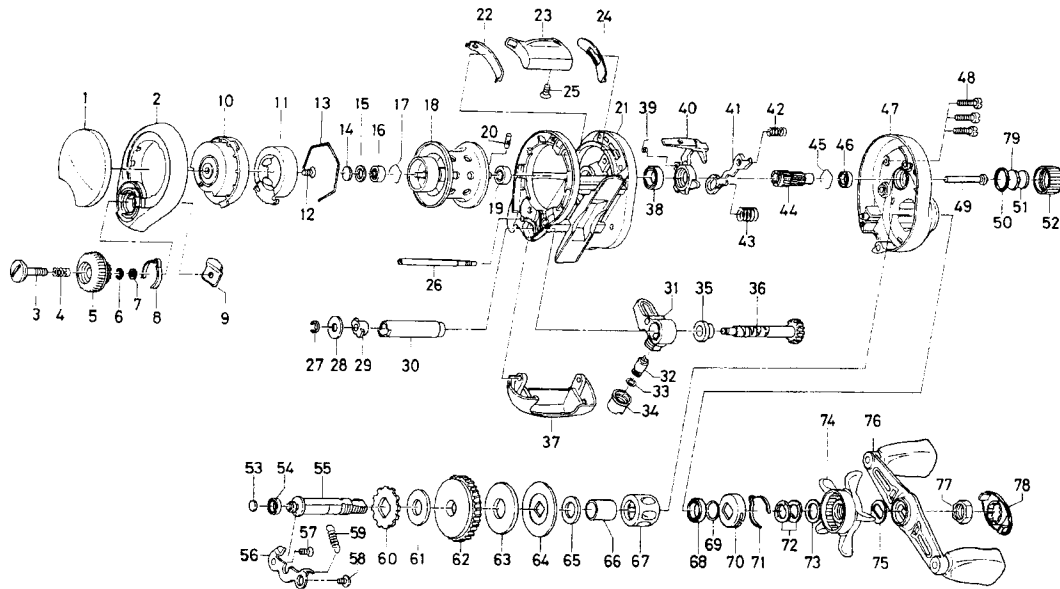
| KEY NO. | PART NO. | PART NAME |
|---------|----------|------------------------|
| 1 | F57-7501 | L/S PLT A |
| 2 | F57-7401 | L/S PLT B |
| 3 | F57-7901 | SET PLT SCREW |
| 4 | E16-7101 | SET PLT SPRING |
| 5 | F57-7801 | BRAKE ADJ KNOB |
| 6 | B33-9801 | BRAKE DIAL RET A |
| 7 | F63-7701 | BRAKE DIAL WASHER |
| 8 | F05-1701 | BRAKE CLICK SPRING |
| 9 | F61-3401 | BRAKE DIAL RET B |
| 10 | F58-2601 | LEFT SET PLT |
| 11 | F57-8101 | MAGNET HOLDER |
| 12 | E29-3001 | LEFT SET PLT SCREW |
| 13 | B54-3201 | MAGNET HOLDER RET RING |
| 14 | 375-7410 | SPACER A |
| 15 | F57-4303 | SPACER B |
| 16 | F57-7701 | BALL BEARING A |
| 17 | E21-9701 | BEARING RET A |
| 18 | F57-8302 | SPOOL |
| 19 | F58-1901 | BALL BEARING B |
| 20 | F57-8701 | SPOOL PIN |
| 21 | F65-4201 | FRAME |
| 22 | F57-5101 | SPACER C |
| 23 | F57-5501 | CLUTCH LEVER |
| 24 | F57-5001 | SPACER D |
| 25 | F21-1102 | CLUTCH LEVER SCREW |
| 26 | F57-3401 | STABILIZER BAR |
| 27 | 320-5901 | WORM SHAFT RET |
| 28 | F65-5501 | WORM SHAFT WASHER |
| 29 | B71-5601 | WORM SHAFT HOLDER A |
| 30 | F57-5801 | LEVEL WIND GUARD |
| 31 | F57-5901 | LINE GUIDE |
| 32 | 121-4212 | LINE GUIDE PAWL |
| 33 | 375-4101 | LINE GUIDE WASHER |
| 34 | 342-4801 | PAWL CAP |
| 35 | E19-9501 | WORM SHAFT HOLDER B |
| 36 | F57-6201 | WORM SHAFT |

TD-X103HIA

| KEY NO. | PART NO. | PART NAME |
|---------|----------|--------------------------|
| 37 | F57-5201 | FRONT PLT |
| 38 | B86-1701 | BALL BEARING C |
| 39 | F56-1901 | CLUTCH CAM SPRING |
| 40 | F57-5301 | CLUTCH CAM |
| 41 | F58-2301 | YOKE |
| 42 | F58-8001 | YOKE SPRING A |
| 43 | E16-7101 | YOKE SPRING B |
| 44 | F57-5701 | PINION GEAR |
| 45 | E21-9701 | BEARING RET |
| 46 | F05-5601 | BALL BEARING D |
| 47 | F57-3301 | R/S PLT |
| 48 | F57-7301 | SET PLT SCREW |
| 49 | F57-4101 | PINION SHAFT |
| 50 | 171-5201 | O RING |
| 51 | B17-5503 | SPACER F |
| 52 | F57-4401 | CAST CONTROL CAP |
| 53 | F57-5601 | DRIVE SHAFT WASHER |
| 54 | F05-5601 | BALL BEARING E |
| 55 | F65-4901 | DRIVE SHAFT |
| 56 | F58-2201 | DRIVE SHAFT RET |
| 57 | F21-1101 | DRIVE SHAFT RET SCREW A |
| 58 | 353-8301 | DRIVE SHAFT RET SCREW B |
| 59 | F62-0401 | CLUTCH TRIP PLT SPRING |
| 60 | E32-7701 | A/R RATCHET |
| 61 | E42-5301 | DRIVE SHAFT WASHER |
| 62 | F58-2401 | DRIVE GEAR |
| 63 | F02-7801 | DRAG WASHER |
| 64 | F06-2501 | KEY WASHER |
| 65 | E42-5401 | SPACING SLEEVE A |
| 66 | F60-2901 | GEAR SHAFT COLLAR |
| 67 | F57-3901 | ROLLER CLUTCH |
| 68 | F58-2501 | BALL BEARING F |
| 69 | B55-3801 | OILED WASHER |
| 70 | F02-8201 | CLICK LEAF SPRING WASHER |
| 71 | F03-2401 | CLICK LEAF SPRING |
| 72 | 150-8901 | DRAG SPRING WASHER |

Please order by part number, not key number.

TD-X103HIA/X105HIA/X103PIA/X105PIA BAITCASTING RE



TD-X103HIA

KEY

| KEY NO. | PART NO. | PART NAME |
|---------|----------|---------------------|
| 73 | 373-7810 | SPACING SLEEVE |
| 74 | F57-6501 | STAR DRAG |
| 75 | F57-6601 | FRICTION WASHER |
| 76 | F65-5101 | HANDLE |
| 77 | B43-3601 | HANDLE NUT |
| 78 | F57-7201 | HANDLE NUT RET |
| 79 | B17-5401 | SPOOL ADJ CAP METAL |

TD-X103PIA SPECIAL PARTS

KEY

| KEY NO. | PART NO. | PART NAME |
|---------|----------|-------------|
| 21 | F65-4401 | FRAME |
| 36 | F57-6202 | WORM SHAFT |
| 44 | F58-3401 | PINION GEAR |
| 47 | F57-3302 | R/S PLT |
| 62 | F58-3301 | DRIVE GEAR |

TD-X105HIA SPECIAL PARTS

KEY

| KEY NO. | PART NO. | PART NAME |
|---------|----------|-----------|
| 18 | F58-3102 | SPOOL |
| 21 | F65-4301 | FRAME |

TD-X105PIA SPECIAL PARTS

KEY

| KEY NO. | PART NO. | PART NAME |
|---------|----------|-------------|
| 18 | F58-3102 | SPOOL |
| 21 | F65-4501 | FRAME |
| 36 | F57-6202 | WORM SHAFT |
| 44 | F58-3401 | PINION GEAR |
| 47 | F57-3302 | R/S PLT |
| 62 | F58-3301 | DRIVE GEAR |