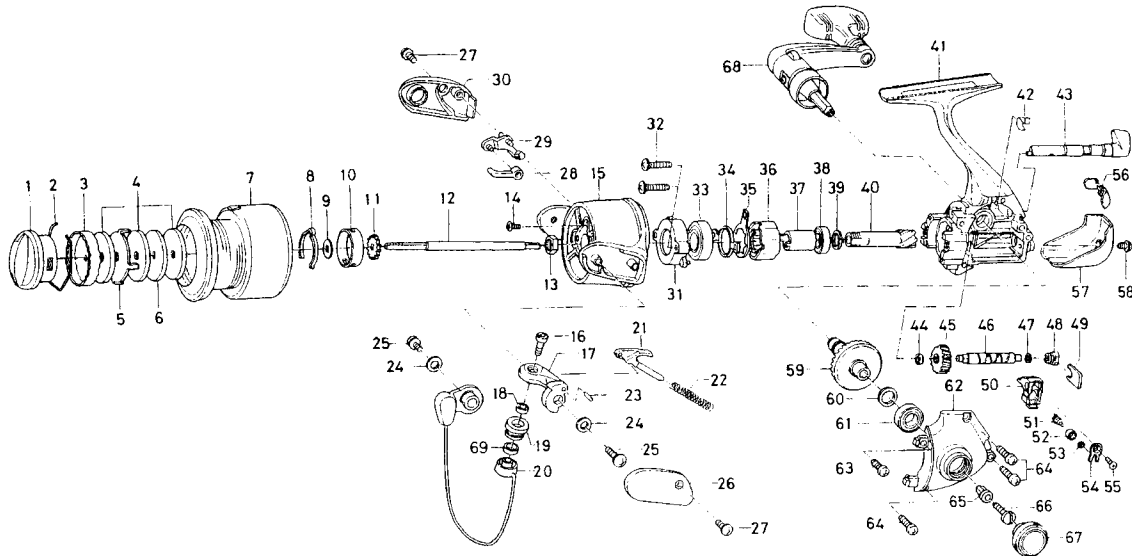


# EMBLEM-X2500iA



| Key No. | Parts No. | Parts Name               | Key No. | Parts No. | Parts Name             |
|---------|-----------|--------------------------|---------|-----------|------------------------|
| 2-7     | F67-4901  | SPOOL                    | 36      | F62-2001  | ROLLER CLUTCH          |
| 1       | F62-7801  | DRAG KNOB                | 37      | F73-2501  | SPACING SLEEVE         |
| 2       | F71-0001  | DRAG WASHER RET          | 38      | 637-5702  | BALL BEARING C         |
| 3       | F67-4301  | DRAG KNOB CLICK PLT      | 39      | F63-3501  | PINION WASHER          |
| 4       | F69-0901  | DRAG WASHER              | 40      | F65-2501  | PINION GEAR            |
| 5       | F67-6401  | EARED WASHER             | 41      | F67-4601  | BODY                   |
| 6       | F67-6301  | KEY WASHER               | 42      | F65-1901  | A/R CAM SPRING         |
| 8       | F70-4901  | SPOOL CLICK LEAF SPRING  | 43      | F65-1801  | A/R LEVER              |
| 9       | E39-3100  | SPOOL WASHER             | 44      | F65-2201  | WORM SHAFT BUSH        |
| 10      | E12-2303  | CLICK LEAF SPRING HOLDER | 45      | F65-2101  | WORM SHAFT GEAR        |
| 11      | E36-5301  | CLICK GEAR               | 46      | F65-2001  | WORM SHAFT             |
| 12      | F65-2701  | MAIN SHAFT               | 47      | 375-4101  | WORM SHAFT WASHER      |
| 13      | 341-9203  | ROTOR NUT                | 48      | F65-2301  | WORM SHAFT COLLAR      |
| 14      | B55-7601  | ROTOR NUT LOCK SCREW     | 49      | F65-2401  | WORM SHAFT RET         |
| 15      | F62-3407  | ROTOR                    | 50      | F65-2601  | OSC SLIDER             |
| 16      | F62-5201  | LINE ROLLER SCREW        | 51      | F62-2601  | OSC PAWL               |
| 17      | F62-3504  | BAIL ARM                 | 52      | F62-2701  | OSC PAWL BUSH          |
| 18      | F62-5101  | BALL BEARING A           | 53      | 375-0801  | OSC PAWL WASHER        |
| 19      | F62-5001  | LINE ROLLER              | 54      | F62-2901  | OSC SLIDER COVER       |
| 20      | F67-4701  | BAIL                     | 55      | E15-0204  | OSC SLIDER COVER SCREW |
| 21      | F69-1101  | BAIL SPRING SHAFT        | 56      | F65-2902  | SHIELD PLT             |
| 22      | F62-3801  | BAIL SPRING              | 57      | F65-3102  | REAR COVER             |
| 23      | F62-3701  | BAIL ARM PIN             | 58      | E24-8101  | REAR COVER SCREW       |
| 24      | F63-1801  | BAIL HOLDER WASHER       | 59      | F65-2801  | DRIVE GEAR             |
| 25      | 351-6101  | BAIL ARM SCREW           | 60      | 375-8502  | DRIVE GEAR WASHER      |
| 26      | F63-1904  | BAIL SPRING COVER        | 61      | 637-5702  | BALL BEARING D         |
| 27      | 352-2501  | BAIL SPRING COVER SCREW  | 62      | F65-3005  | SIDE COVER             |
| 28      | F62-4601  | BAIL TRIP PLT            | 63      | E15-7502  | SIDE COVER SCREW A     |
| 29      | F62-4701  | BAIL TRIP LEVER          | 64      | E13-0501  | SIDE COVER SCREW B     |
| 30      | F63-2104  | BAIL TRIP COVER          | 65      | F40-4801  | HANDLE COLLAR          |
| 31      | F67-5501  | BEARING RET A            | 66      | 363-8511  | HANDLE SCREW           |
| 32      | E24-7402  | BEARING RET SCREW        | 67      | F65-3502  | HANDLE SCREW CAP       |
| 33      | F63-1201  | BALL BEARING B           | 68      | F69-3301  | HANDLE                 |
| 34      | F67-5401  | BEARING RET B            | 69      | F71-1801  | LINE ROLLER COLLAR     |
| 35      | F62-2201  | ROLLER CLUTCH RET        |         |           |                        |