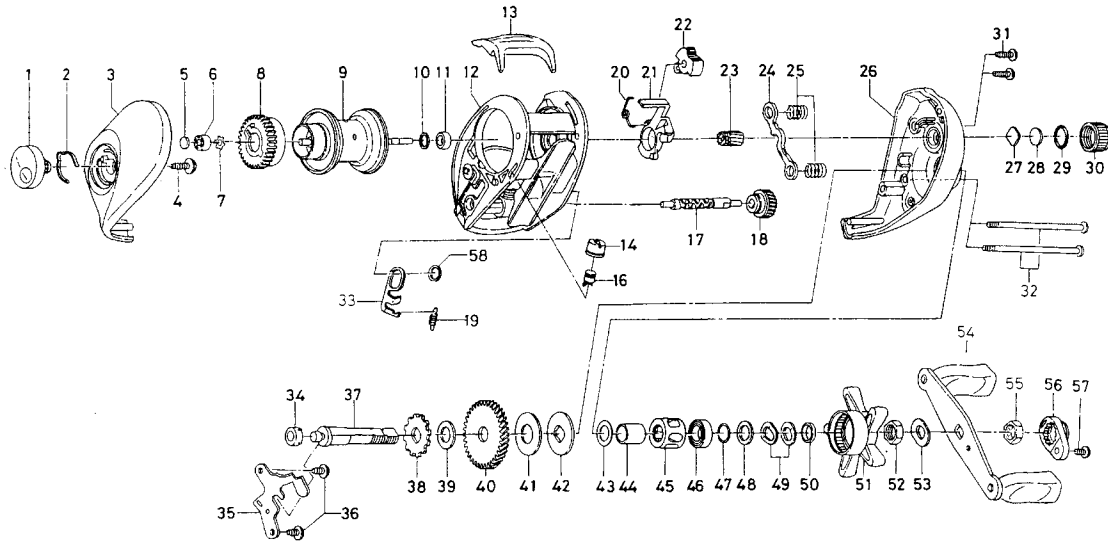


# TRIFORCE-X150iV / 153iV



**Key No. Parts No.**

**Parts Name**

|    |          |                        |
|----|----------|------------------------|
| 1  | F40-3613 | BRAKE ADJ KNOB         |
| 2  | F03-2401 | BRAKE CLICK SPRING     |
| 3  | F40-3309 | L/S PLT                |
| 4  | B84-2102 | BRAKE ADJ KNOB SCREW   |
| 5  | 374-9102 | SPACER A               |
| 6  | F40-3701 | BUSHING A              |
| 7  | F41-2301 | BEARING RET            |
| 8  | E23-9501 | MAGNET HOLDER          |
| 9  | F43-4201 | SPOOL                  |
| 10 | F45-0601 | BUSHING RET            |
| 11 | E35-1501 | BUSHING B              |
| 12 | F61-6401 | FRAME                  |
| 13 | F40-2001 | CLUTCH LEVER           |
| 14 | F40-2801 | PAWL CAP               |
| 16 | F51-6501 | LINE GUIDE PAWL        |
| 17 | F51-0301 | WORM SHAFT             |
| 18 | F06-1301 | WORM SHAFT GEAR        |
| 19 | F63-9901 | CLUTCH TRIP PLT SPRING |
| 20 | E24-9001 | CLUTCH CAM SPRING      |
| 21 | E23-7401 | CLUTCH CAM             |
| 22 | E24-9101 | FLIPPING CAST SELECTOR |
| 23 | F40-9202 | PINION GEAR            |
| 24 | E23-7701 | YOKE                   |
| 25 | E16-7101 | YOKE SPRING            |
| 26 | F40-7817 | R/S PLT                |
| 27 | B17-5401 | SPOOL ADJ CAP METAL    |
| 28 | B17-5503 | SPACER B               |
| 29 | 171-5201 | O RING                 |
| 30 | F40-3001 | CAST CONTROL CAP       |
| 31 | E33-0401 | SET PLT SCREW          |
| 32 | E28-4901 | R/S PLT SCREW          |
| 33 | F42-8801 | CLUTCH TRIP PLT        |

**Key No. Parts No.**

**Parts Name**

|    |          |                       |
|----|----------|-----------------------|
| 34 | B55-0301 | BUSHING C             |
| 35 | F43-9701 | DRIVE SHAFT RET       |
| 36 | F21-2201 | DRIVE SHAFT RET SCREW |
| 37 | F40-2301 | DRIVE SHAFT           |
| 38 | E32-7701 | A/R RATCHET           |
| 39 | 375-7103 | DRIVE SHAFT WASHER    |
| 40 | F40-2501 | DRIVE GEAR            |
| 41 | F60-2401 | DRAG WASHER           |
| 42 | B36-0303 | KEY WASHER            |
| 43 | E42-5401 | SPACING SLEEVE A      |
| 44 | F40-7901 | GEAR SHAFT COLLAR     |
| 45 | F40-8001 | ROLLER CLUTCH         |
| 46 | F05-5501 | BALL BEARING          |
| 47 | B55-3801 | BEARING WASHER A      |
| 48 | 373-7810 | BEARING WASHER B      |
| 49 | 150-8901 | DRAG SPRING WASHER    |
| 50 | B97-4901 | SPACING SLEEVE B      |
| 51 | F40-3201 | STAR DRAG             |
| 52 | B43-3601 | DRAG NUT              |
| 53 | 150-9001 | FRICTION WASHER       |
| 54 | F61-9101 | HANDLE                |
| 55 | B43-3601 | HANDLE NUT            |
| 56 | F05-4401 | HANDLE NUT RET        |
| 57 | 351-1803 | HANDLE NUT PLT SCREW  |
| 58 | F44-0201 | CLUTCH TRIP PLT RET   |

**TF-X153iV**

**Key No. Parts No.**

**Parts Name**

|    |          |       |
|----|----------|-------|
| 9  | F62-9901 | SPOOL |
| 12 | F61-6501 | FRAME |