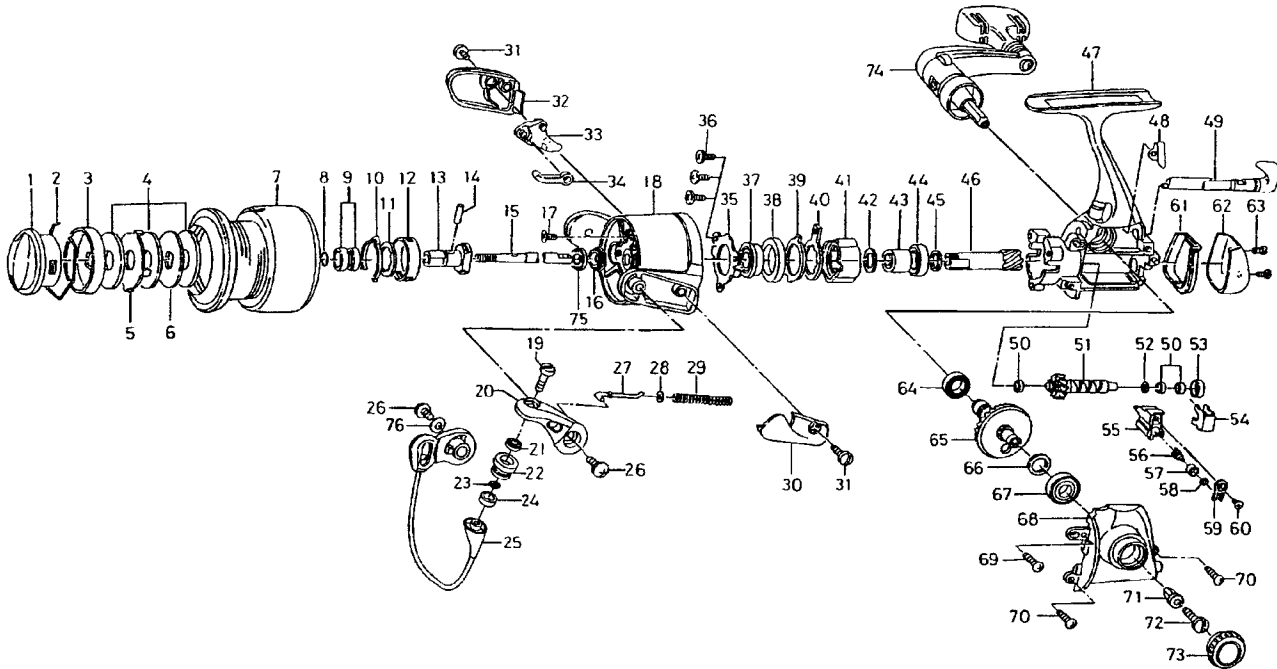


TEAM DAIWA-Z2500CU



| Key No. | Parts No. | Parts Name |
|---------|-----------|--------------------------|
| 2-7 | G10-3101 | SPOOL |
| 1 | F96-5802 | DRAG KNOB |
| 2 | F71-0001 | DRAG WASHER RET |
| 3 | F89-5304 | DRAG KNOB CLICK PLT |
| 4 | F69-1001 | DRAG WASHER |
| 5 | F62-7301 | EARED WASHER |
| 6 | F62-7201 | KEY WASHER |
| 8 | F76-5901 | O RING |
| 9 | F01-6401 | BALL BEARING A |
| 10 | F70-4901 | SPOOL CLICK LEAF SPRING |
| 11 | F62-5501 | SPOOL WASHER |
| 12 | F62-5401 | CLICK LEAF SPRING HOLDER |
| 13 | F62-5301 | SPOOL METAL |
| 14 | F62-5601 | PIN |
| 15 | F62-2801 | MAIN SHAFT |
| 16 | F97-9301 | ROTOR NUT |
| 17 | B55-7603 | ROTOR NUT LOCK SCREW |
| 18 | F88-9601 | ROTOR |
| 19 | F92-1701 | LINE ROLLER SCREW |
| 20 | F89-2201 | BAIL ARM |
| 21 | G02-0801 | BALL BEARING B |
| 22 | F92-1601 | LINE ROLLER |
| 23 | F89-7101 | LINE ROLLER WASHER |
| 24 | G04-7601 | LINE ROLLER COLLAR |
| 25 | F96-5302 | BAIL |
| 26 | F89-2501 | BAIL HOLDER SCREW |
| 27 | F89-2301 | BAIL SPRING SHAFT |
| 28 | E31-3901 | BAIL SPRING WASHER |
| 29 | F89-2401 | BAIL SPRING |
| 30 | F89-2601 | BAIL SPRING COVER |
| 31 | F89-2701 | BAIL SPRING COVER SCREW |
| 32 | F89-3401 | BAIL TRIP COVER |
| 33 | F62-4701 | BAIL TRIP LEVER |
| 34 | F62-4601 | BAIL TRIP PLT |
| 35 | F94-6601 | BEARING RET |
| 36 | 352-2501 | BEARING RET SCREW |
| 37 | F22-6701 | BALL BEARING C |
| 38 | F94-6201 | BALL BEARING COLLAR A |

| Key No. | Parts No. | Parts Name |
|---------|-----------|------------------------|
| 39 | F62-2301 | ROLLER CLUTCH RET A |
| 40 | F62-2201 | ROLLER CLUTCH RET B |
| 41 | F62-2002 | ROLLER CLUTCH |
| 42 | 375-8509 | ROLLER CLUTCH WASHER |
| 43 | F73-2501 | SPACING SLEEVE |
| 44 | 637-5702 | BALL BEARING D |
| 45 | F63-3502 | BALL BEARING COLLAR B |
| 46 | F89-1001 | PINION GEAR |
| 47 | G10-2801 | BODY |
| 48 | F76-9101 | A/R LEVER SPRING |
| 49 | F62-1310 | A/R LEVER |
| 50 | F28-2201 | BALL BEARING E |
| 51 | F91-0301 | WORM SHAFT |
| 52 | 375-4101 | WORM SHAFT WASHER |
| 53 | F62-1701 | WORM SHAFT COLLAR |
| 54 | F62-1801 | WORM SHAFT RET |
| 55 | F63-1701 | OSC SLIDER |
| 56 | F89-1701 | OSC PAWL |
| 57 | F91-3001 | OSC PAWL BUSH |
| 58 | 375-0801 | OSC PAWL WASHER |
| 59 | F62-2901 | OSC SLIDER COVER |
| 60 | E15-0205 | OSC SLIDER COVER SCREW |
| 61 | F62-3104 | WATER SHIELD |
| 62 | F62-3206 | REAR COVER |
| 63 | F62-3301 | REAR COVER SCREW |
| 64 | F01-6401 | BALL BEARING F |
| 65 | F63-1001 | DRIVE GEAR |
| 66 | 375-8500 | DRIVE GEAR WASHER |
| 67 | 636-6403 | BALL BEARING G |
| 68 | F62-3010 | SIDE COVER |
| 69 | 351-1005 | SIDE COVER SCREW A |
| 70 | 351-1106 | SIDE COVER SCREW B |
| 71 | F40-4801 | HANDLE COLLAR |
| 72 | 363-8511 | HANDLE SCREW |
| 73 | F96-4301 | HANDLE SCREW CAP |
| 74 | G10-2901 | HANDLE |
| 75 | F97-9401 | ROTOR NUT WASHER |
| 76 | G04-7901 | BAIL HOLDER WASHER |