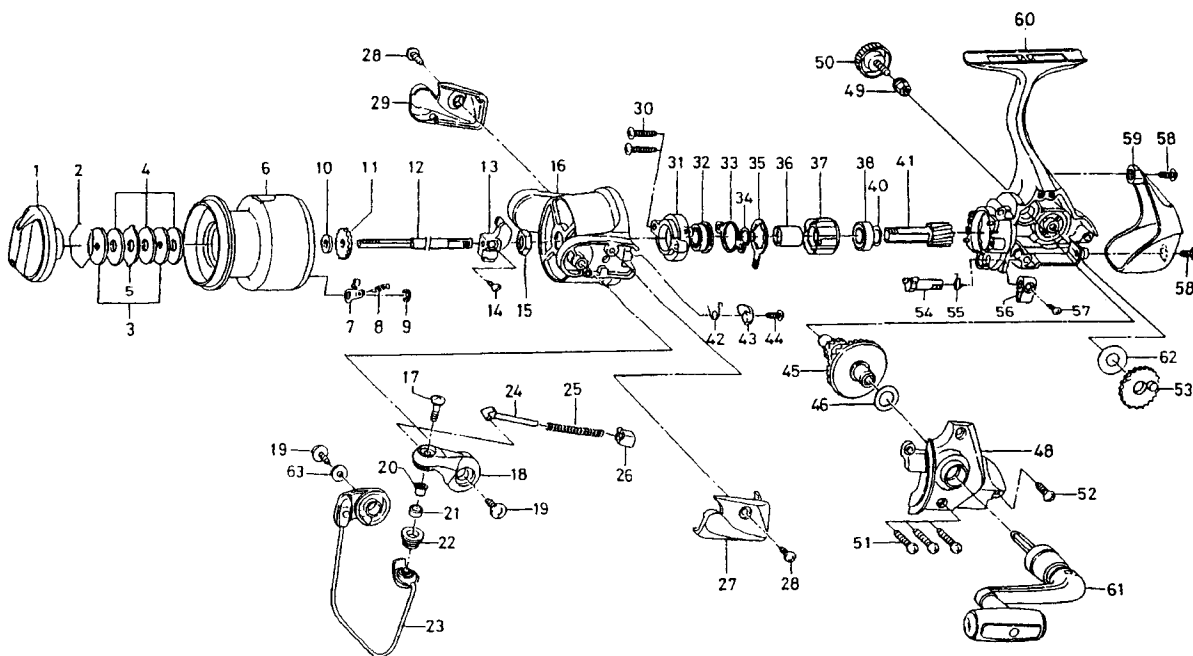


# REGAL S2500C



Key No.	Parts No.	Parts Name	Key No.	Parts No.	Parts Name
1	F77-7608	DRAG KNOB	32	F22-6701	BALL BEARING A
2	F37-3301	DRAG WASHER RET	33	F67-7301	ROLLER CLUTCH RET A
3	E46-7201	KEY WASHER	34	375-8509	ROLLER CLUTCH RET B
4	E13-6001	DRAG WASHER	35	G03-6901	ROLLER CLUTCH RET B
5	373-3603	EARED WASHER	36	F73-2501	SPACING SLEEVE
2-9	G17-2201	SPOOL	37	F62-2001	ROLLER CLUTCH
7	B07-5304	CLICK PAWL	38	634-1301	BALL BEARING B
8	E40-3101	CLICK SPRING	40	375-8504	PINION WASHER
9	320-5901	CLICK RET	41	G01-6201	PINION GEAR
10	E46-7101	SPOOL WASHER	42	G01-7201	BAIL TRIP LEVER SPRING
11	F81-1501	CLICK GEAR	43	G01-7301	BAIL TRIP LEVER
12	G01-6701	MAIN SHAFT	44	G12-2401	BAIL TRIP LEVER SCREW
13	G01-6501	OSC SLIDER	45	G01-6601	DRIVE GEAR
14	351-0315	OSC SLIDER SCREW	46	375-8500	DRIVE GEAR WASHER
15	F33-6102	ROTOR NUT	48	G17-1901	SIDE COVER
16	G01-7103	ROTOR	49	F72-1001	HANDLE COLLAR
17	G01-8601	LINE ROLLER SCREW	50	F67-6502	HANDLE SCREW
18	G01-7802	BAIL ARM	51	E15-8602	SIDE COVER SCREW A
19	B84-2102	BAIL HOLDER SCREW	52	G14-4401	SIDE COVER SCREW B
20	G15-2501	LINE ROLLER COLLAR	53	F67-7401	OSC GEAR
21	G17-3801	LINE ROLLER BUSHING	54	G01-5901	A/R CAM
22	F62-5002	LINE ROLLER	55	G01-6101	A/R CAM SPRING
23	G17-2001	BAIL	56	G01-5802	A/R LEVER
24	G01-7501	BAIL SPRING SHAFT	57	G01-6001	A/R LEVER SCREW
25	G01-7701	BAIL SPRING	58	G27-0801	REAR COVER SCREW
26	G01-7401	BAIL SPRING HOLDER	59	G16-6801	REAR COVER
27	G01-7903	BAIL SPRING COVER	60	G17-1801	BODY
28	E36-4202	BAIL SPRING COVER SCREW	61	G17-2101	HANDLE
29	G01-8503	BAIL HOLDER COVER	62	F76-7700	OSC GEAR WASHER
30	G25-2401	BAIL HOLDER COVER SCREW	63	F40-1001	BAIL HOLDER WASHER
31	G01-6401	BEARING RET			