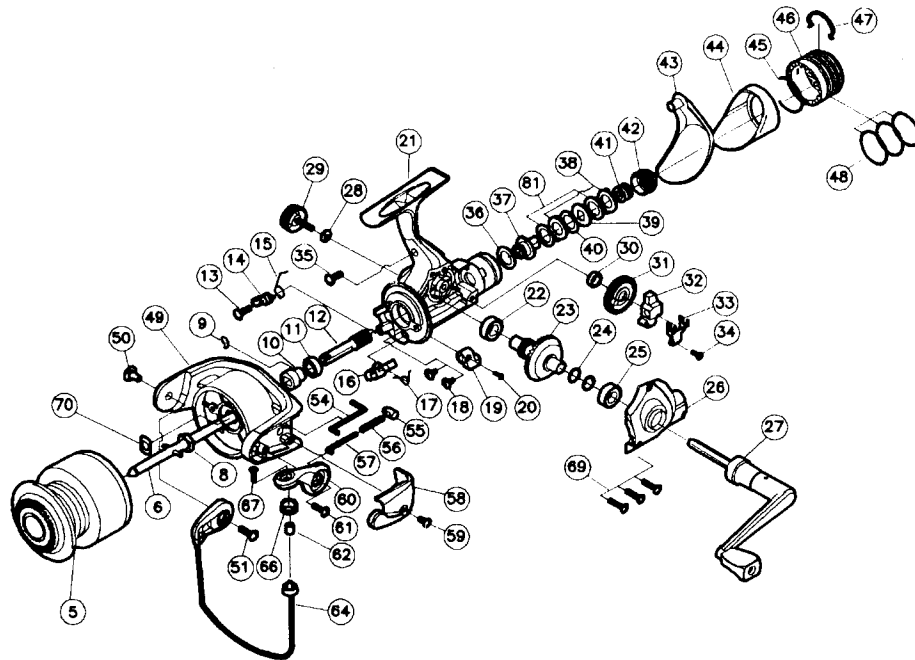


# CROSSFIRE 1550



| Key No. | Parts No. | Parts Name               | Key No. | Parts No. | Parts Name            |
|---------|-----------|--------------------------|---------|-----------|-----------------------|
| 5       | W35-0401  | SPOOL                    | 37      | W00-0301  | CLICK GEAR            |
| 6       | W00-5101  | MAIN SHAFT               | 38      | W00-0501  | EARED WASHER          |
| 8       | W00-4801  | ROTOR NUT                | 39      | W00-0601  | KEY WASHER            |
| 9       | W35-1102  | A/R PAWL SPRING A        | 40      | W00-0401  | DRAG WASHER B         |
| 10      | W35-1202  | SPRING HOLDER            | 41      | W00-0701  | DRAG COIL SPRING      |
| 11      | W00-2801  | BALL BEARING A           | 42      | W35-4201  | DRAG SCREW            |
| 12      | W35-1302  | PINION GEAR              | 43      | W35-4301  | REAR COVER A          |
| 13      | W35-1601  | A/R PAWL SCREW           | 44      | W35-4601  | REAR COVER B          |
| 14      | W35-1801  | A/R PAWL                 | 45      | W35-4901  | REAR COVER RET        |
| 15      | W35-2301  | A/R PAWL SPRING B        | 46      | W35-5001  | DRAG KNOB             |
| 16      | W35-2701  | A/R CAM                  | 47      | W35-5301  | DRAG KNOB RET         |
| 17      | W00-2401  | A/R CAM SPRING           | 48      | W35-5401  | O RING                |
| 18      | W00-3101  | BALL BEARING SCREW       | 49      | W35-5504  | ROTOR                 |
| 19      | W00-2101  | A/R LEVER                | 50      | W35-5901  | BAIL HOLDER NUT       |
| 20      | W00-2201  | A/R LEVER SCREW          | 51      | W35-6001  | BAIL HOLDER SCREW     |
| 21      | W35-3103  | BODY                     | 54      | W35-6101  | BAIL TRIP LEVER       |
| 22      | W00-1801  | DRIVE GEAR BUSHING       | 55      | W35-6201  | BAIL SPRING HOLDER    |
| 23      | W00-1901  | DRIVE GEAR               | 56      | W35-6301  | BAIL SPRING           |
| 24      | W00-2001  | DRIVE GEAR WASHER        | 57      | W35-6401  | BAIL SPRING SHAFT     |
| 25      | W01-5701  | BALL BEARING B           | 58      | W35-6501  | BAIL TRIP COVER       |
| 26      | W35-3333  | SIDE COVER               | 59      | W00-4601  | BAIL TRIP COVER SCREW |
| 27      | W35-3603  | HANDLE                   | 60      | W35-6604  | BAIL ARM              |
| 28      | W00-3901  | HANDLE WASHER            | 61      | W00-5701  | BAIL ARM SCREW        |
| 29      | W35-3903  | HANDLE SCREW             | 62      | W00-5401  | LINE ROLLER COLLAR    |
| 30      | W35-4001  | OSC GEAR COLLAR          | 64      | W35-7001  | BAIL                  |
| 31      | W00-1401  | OSC GEAR                 | 66      | W35-7401  | LINE ROLLER           |
| 32      | W00-1501  | OSC SLIDER               | 67      | W00-5501  | LINE ROLLER SCREW     |
| 33      | W00-1601  | OSC SLIDER RET           | 69      | W00-3801  | SIDE COVER SCREW      |
| 34      | W00-1701  | OSC SLIDER RET PLT SCREW | 70      | W00-4901  | ROTOR NUT HOLD PLT    |
| 35      | W35-4102  | REAR COVER SCREW         | 81      | W35-8701  | DRAG WASHER C         |
| 36      | W00-0201  | DRAG WASHER A            |         |           |                       |