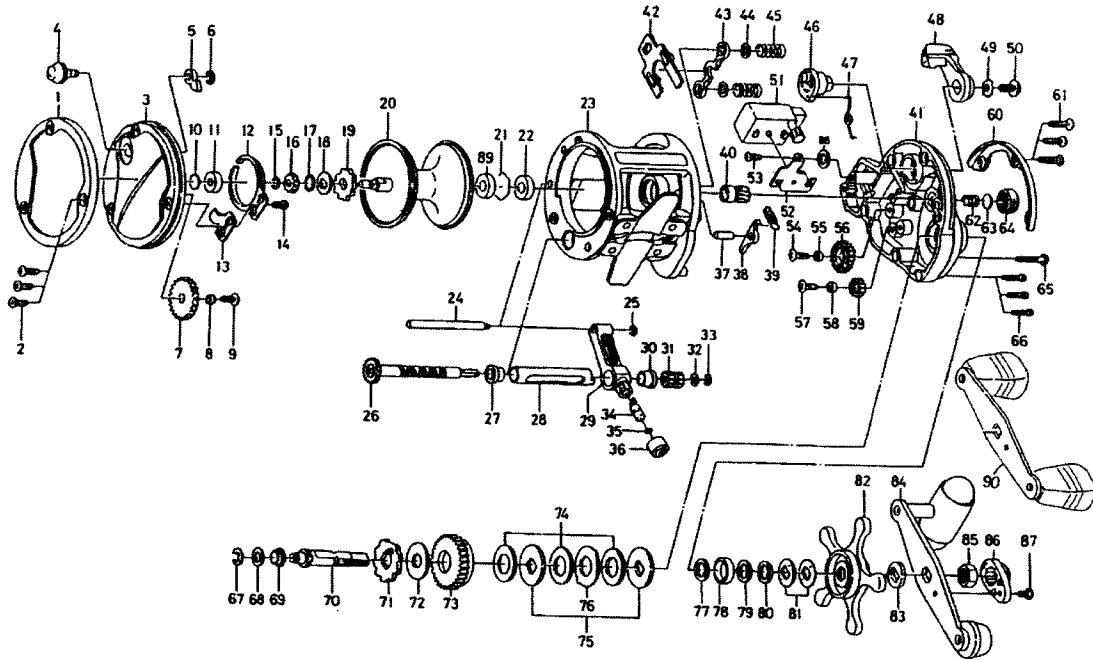


# CONVENTIONAL REEL SEALINE SG27LCA / 27LCA-W / 47LCA



Key No.	Parts No.	Parts Name
1	F09-3901	L/S OUTER RING
2	F09-3601	L/S PLT SCREW
3	F09-3703	L/S PLT
4	B21-6602	CLICK BUTTON
5	030-6611	CLICK PAWL
6	320-1402	CLICK PAWL RET
7	B21-5801	IDLE GEAR
8	B65-6201	IDLE GEAR COLLAR
9	E10-7401	IDLE GEAR SCREW
10	375-7405	BALL BEARING WASHER
11	637-2102	BALL BEARING A
12	160-7922	CLICK SPRING
13	B21-5501	CLICK SPRING RET
14	B83-4402	CLICK SPRING SCREW
15	320-8002	SPOOL GEAR RET RING
16	403-2901	SPOOL GEAR
17	E15-4801	CLICK LEVER WASHER
18	E36-1402	CLICK SPRING WASHER
19	B21-6701	CLICK GEAR
20	G38-7201	SPOOL
21	B27-0501	BEARING RET
22	F07-8301	BUSHING A
23	G23-7801	FRAME
24	F09-3001	STABILIZER BAR
25	320-5901	STABILIZER BAR RET
26	F09-2601	WORM SHAFT
27	E14-4801	WORM BEARING
28	F09-2801	LEVEL WIND GUARD
29	E36-2401	LINE GUIDE
30	E14-4801	WORM BEARING
31	F09-2901	COUNTER GEAR
32	B41-1702	WORM SHAFT HOLDER WASHER
33	320-5901	WORM SHAFT RET
34	122-0601	LINE GUIDE PAWL
35	F95-0200	LINE GUIDE WASHER
36	E35-4101	PAWL CAP
37	E25-2301	A/R PAWL PIN
38	B62-6801	A/R PAWL
39	E23-4201	A/R PAWL SPRING
40	F13-5401	PINION GEAR
41	F09-1705	R/S PLT
42	F09-3101	YOKE PLT
43	E25-9101	YOKE
44	E03-7706	YOKE WASHER
45	F93-5201	YOKE SPRING
46	F09-2001	CLUTCH CAM
47	E32-2301	CLUTCH SPRING
48	E42-6802	CLUTCH LEVER
49	160-8001	CLUTCH LEVER LOCK WASHER
50	E00-7602	CLUTCH LEVER SCREW
51	F09-2101	COUNTER ASSEMBLY
52	E24-1801	COUNTER PLT
53	E31-6701	COUNTER SCREW

Key No.	Parts No.	Parts Name
54	E10-7401	COUNTER GEAR SCREW
55	B65-6201	COUNTER GEAR COLLAR
56	E24-1901	COUNTER GEAR A
57	E10-7401	COUNTER GEAR SCREW
58	B65-6201	COUNTER GEAR COLLAR
59	F09-2201	COUNTER GEAR B
60	F09-3501	R/S OUTER RING
61	F09-3601	R/S PLT SCREW A
62	B93-9601	SPOOL TENSION SPRING
63	375-7405	SPACER A
64	B93-9702	CAST CONTROL CAP
65	B00-9702	R/S PLT SCREW B
66	E11-9601	R/S PLT SCREW C
67	320-7602	DRIVE SHAFT RET
68	375-5805	DRIVE SHAFT WASHER A
69	E25-2501	DRIVE SHAFT BUSH
70	E25-2601	DRIVE SHAFT
71	E25-2801	A/R RATCHET
72	374-6604	DRIVE SHAFT WASHER B
73	F09-3401	DRIVE GEAR
74	E32-6501	DRAG WASHER
75	E20-0201	KEY WASHER
76	376-3101	EARED WASHER
77	373-7806	SPACER B
78	F05-5502	BALL BEARING B
79	373-7807	SPACER C
80	373-7806	SPACER D
81	E25-3501	DRAG SPRING WASHER
82	E25-3601	STAR DRAG
83	E25-3901	SPACING SLEEVE
84	F09-4102	HANDLE
85	B86-2101	HANDLE NUT
86	E44-0001	HANDLE NUT PLT
87	351-1803	HANDLE NUT PLT SCREW
88	373-1303	COUNTER WASHER
89	G38-7401	BUSHING B

**SPECIAL PART FOR SG27LCA-W**

Key No.	Parts No.	Parts Name
90	G41-2901	HANDLE

**SPECIAL PART FOR SG47LCA**

Key No.	Parts No.	Parts Name
3	F09-3704	L/S PLT
20	G38-7601	SPOOL
23	G23-7901	FRAME
24	F09-5801	STABILIZER BAR
26	F09-5501	WORM SHAFT
28	F09-5701	LEVEL WIND GUARD
40	F09-3201	PINION GEAR
41	F09-1706	R/S PLT
89	G38-7801	BUSHING B