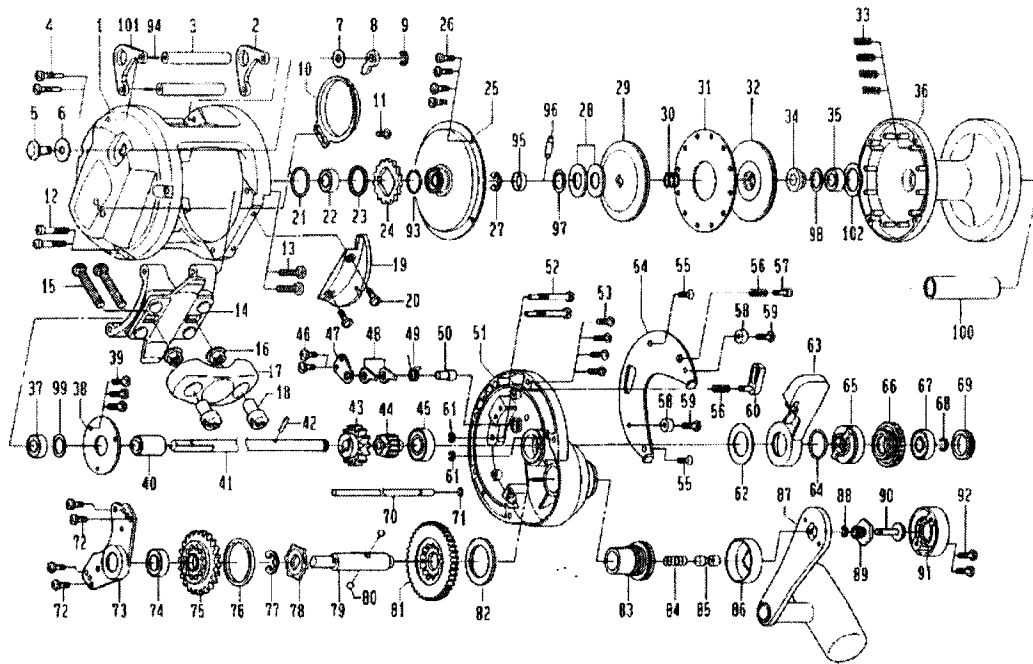


CONVENTIONAL REEL

SEALINE LEVER DRAG 20-II 30-II



Key No.	Parts No.	Parts Name
1	Z01-3064	FRAME
2	G35-0701	HARNES LUG A
3	G37-1901	STABILIZER BAR A
4	G37-6901	L/S PLT SCREW A
5	G35-0601	CLICK LEVER
6	375-9201	CLICK LEVER WASHER
7	375-9301	CLICK BUTTON WASHER
8	030-6111	CLICK PAWL
9	320-7601	CLICK PAWL RET
10	G35-0501	CLICK SPRING
11	351-7705	CLICK SPRING SCREW
12	353-9403	L/S PLT SCREW B
13	G38-3201	STAND SCREW
14	G37-1301	FRAME STAND
15	364-1101	CLAMP BOLT
16	F18-7801	CLAMP NUT
17	G38-7901	ROD CLAMP
18	F18-7702	ROD BRACE NUT
19	G35-1001	FRAME PLT
20	351-6406	FRAME PLT SCREW
21	G37-8001	O RING A
22	636-6403	BALL BEARING A
23	G37-2701	RING
24	G34-9301	CLICK GEAR
25	G34-9201	RATCHET COVER
26	G04-0803	COVER SCREW
27	F67-3501	RATCHET COVER RET
28	G45-5201	DRAG SPRING WASHER
29, 32	G34-8901	DRAG WASHER
30	G34-8601	BALL BEARING SPRING
31	G34-8701	DRAG PLT
35, 37	G29-2802	BALL BEARING B
33	G34-5901	SPOOL SPRING
34	G34-8501	SPOOL COLLAR
36	G37-1601	SPOOL
38	G34-8401	DRIVE SHAFT RET
39	351-1001	DRIVE SHAFT RET SCREW
40	G34-8301	SPACING SLEEVE
41	G37-1001	DRIVE SHAFT A
42	G32-2701	DRIVE SHAFT PIN
43	G34-7801	PINION GEAR A
44	G34-7701	PINION GEAR B
45	635-5001	BALL BEARING C
46	351-6601	STOPPER SCREW
47	G34-5401	STOPPER PLT
48	F86-0402	STOPPER
49	G34-5301	STOPPER SPRING
50	G34-5101	STOPPER PIN
51	G34-4901	R/S PLT
52	G37-7001	R/S PLT SCREW A
53	E45-4001	R/S PLT SCREW B
54	G34-5502	PRE-SET PLT
55	F21-1105	PRE-SET PLT SCREW
56	G34-5901	PUSH BUTTON SPRING
57	G34-5801	PUSH BUTTON

Key No.	Parts No.	Parts Name
58	G34-5601	PRE-SET PLT COLLAR
59	351-7802	PRE-SET PLT COLLAR SCREW
60	G34-5701	STRIKE STOPPER BUTTON
61	320-5901	RET
62	G34-9601	DRAG LEVER WASHER
63	G34-9701	DRAG LEVER
64	G45-5301	O RING B
65	G34-9801	PRE-SET CAM
66	G34-9901	PRE-SET DRAG KNOB
67	636-6403	BALL BEARING D
68	F67-3501	PRE-SET DRAG RET
69	G35-0001	PRE-SET DRAG SCREW
70	G37-1801	STABILIZER BAR B
71	F55-0501	STABILIZER BAR RET
72	351-6601	SET PLT SCREW
73	G34-6601	SET PLT
74	635-4801	BALL BEARING E
75	G34-6501	DRIVE GEAR B
76	G34-6401	DRIVE GEAR COLLAR
77	321-1101	RATCHET RET
78	G34-6101	RATCHET
79	G34-6001	DRIVE SHAFT B
80	G34-6901	DRIVE SHAFT BALL
81	G34-6301	DRIVE GEAR A
82	G34-6201	DRIVE GEAR WASHER
83	G34-5001	DRIVE SHAFT METAL
84	G34-6701	DRIVE SHAFT SPRING
85	G34-6801	DRIVE SHAFT PIN
86	G34-7001	DRIVE SHAFT CAP
87	G34-7101	HANDLE
88	F55-0501	HANDLE RET
89	G34-7401	HANDLE NUT
90	G34-7501	HANDLE BUTTON
91	G34-7601	HANDLE CAP
92	G04-0801	HANDLE SCREW
93	171-1001	O RING C
94	G48-5101	STABILIZER BAR RET
95	G45-3101	RATCHET COLLAR
96	G45-5501	PIN
97	375-8503	WASHER
98, 99	375-8500	BALL BEARING WASHER A
100	G47-6101	COLLAR
101	G35-0702	HARNES LUG B
102	372-7600	BALL BEARING WASHER B

SPECIAL PART FOR SLD30-II

Key No.	Parts No.	Parts Name
1	Z01-3067	FRAME
3	G35-0901	STABILIZER BAR A
14	G37-2501	FRAME STAND
36	G34-7901	SPOOL
41	G34-9401	DRIVE SHAFT A
70	G35-0801	STABILIZER BAR B
100	G47-6001	COLLAR