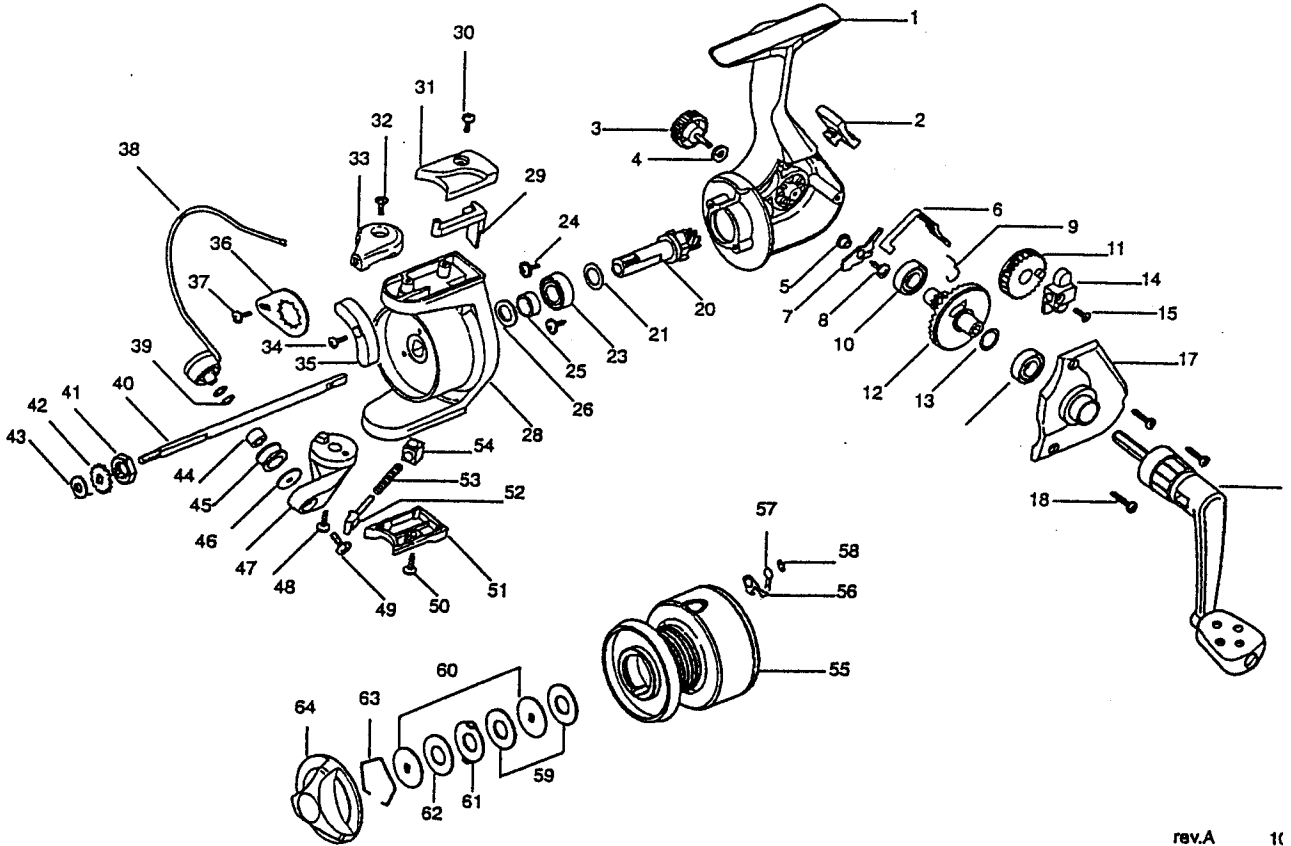


# MITCHELL

# M210,230,250



rev.A 11

ITEM	PART NO.	ITEM	PART NO.	ITEM	PART NO.	ITEM	PART NO.	
1	88666	19	88653	36	88670	55	88669	
	88651 •		88613 Δ	37	88671		88656 •	
	88611 Δ		88655	38	88663		88615 Δ	
2	88632		88614 Δ		88646 •		56	88596
	88555 Δ	21	88602x4		88584 Δ		57	88597
3	88556	23	88637	39	88585x2		58	88598
4	88619		88567 Δ	40	88647		59	88623x2
5	88558	24	88600x2		88570 Δ			88593x2 Δ
6	88631	25	88636	41	88601		60	88621x2
	88561 Δ		88599 Δ	42	88571			88592x2 Δ
7	88630	26	88665	43	88604		61	88594
	88559 Δ		88603 Δ	44	88586		62	88624
8	88609	28	88668	45	88587			88672 Δ
	88562		88654 •	46	88598		63	88626
9	88557		88612 Δ	47	88663			88591 Δ
10	88633	29	88644		88646 •		64	88664
	88563 Δ		88581 Δ		88584 Δ			88625 •
12	88629	30	88578	48	88578			88590 Δ
	88554 Δ		88643	49	88575			
13	88568	31	88580 Δ	50	88578			
14	88634		88578	51	88642			
	88564 Δ	32	88645		88579 Δ			
15	88565	33	88582 Δ	52	88641			
16	88560	34	88650		88574 Δ			
17	88667	35	not used Δ	53	88573			
	88652 •		88661	54	88572			
18	88610 Δ		88649 •					
	88569x3		not used Δ					

• = M230

Δ = M250