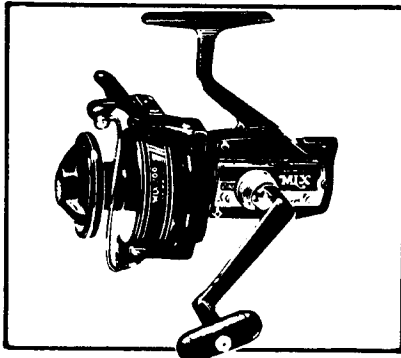


SHIMANO

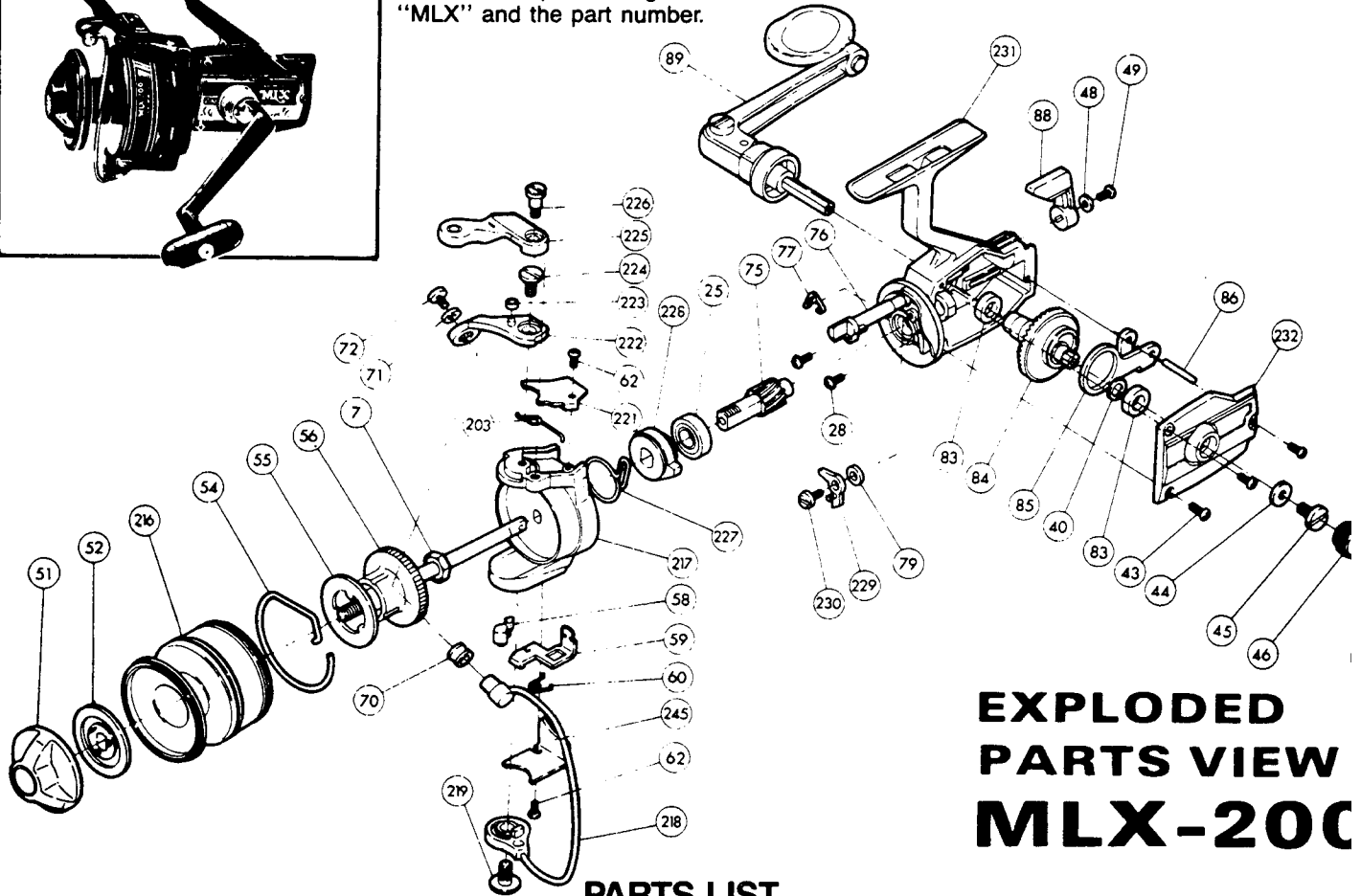
1987 REPAIR MANUAL SHEET MLX-200

Shimano American Corporation, One Shimano Drive
Irvine, CA 92718



TO ORDER:

This reel belongs to the "MLX, MLZ" series.
Please order parts using the abbreviation
"MLX" and the part number.



EXPLODED PARTS VIEW MLX-200

PARTS LIST

PART # DESCRIPTION

- 7. Rotor Nut
- 25. Ball Bearing
- 28. Bearing Retainer Screw
- 40. Drive Gear Spacer (optional)
- 43. Side Plate Screw
- 44. Lock Washer
- 45. Handle Screw
- 46. Dust Cap
- 48. Anti Reverse Lever Lock Wash.
- 49. Anti Reverse Lever Screw
- 51. Drag Adjusting Knob
- 52. Drag Disk
- 54. Click Spring
- 55. Base Drag Washer
- 56. Spindle
- 58. Trip Plate Cam
- 59. Trip Plate

PART # DESCRIPTION

- 60. Trip Plate Spring
- 62. Cover Screw
- 65. Bail Spring
- 70. Roller Line Guide
- 71. Lock Washer
- 72. Bail Wire Screw
- 75. Pinion Gear
- 76. Anti Reverse Shaft
- 77. Anti Reverse Shaft Spring
- 79. Anti Reverse Dog Spacer
- 83. Drive Gear Bushing
- 84. Drive Gear
- 85. Oscillation Guide
- 86. Oscillation Guide Pin
- 88. Anti Reverse Lever
- 89. Handle
- 203. Bail Spring (formerly #65)
- 216. Spool Shell

PART # DESCRIPTION

- 217. Rotor
- 218. Bail Wire
- 219. Bail Wire Screw
- 221. Bail Spring Cover
- 222. Bail Mount
- 223. Trigger Pin Roller
- 224. Bail Mount Screw
- 225. Quick Fire Trigger
- 226. Trigger Screw
- 227. Rotor Stop Spring
- 228. Self Center Ratchet
- 229. Anti Reverse Dog
- 230. Anti Reverse Dog Screw
- 231. Housing
- 232. Side Plate
- 245. Trip Lever Cover