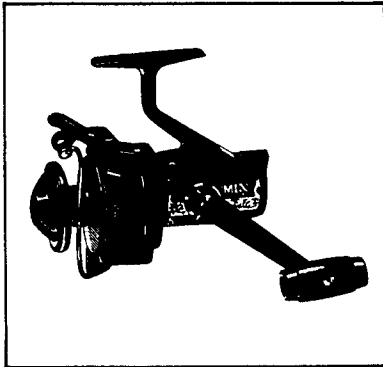


SHIMANO®

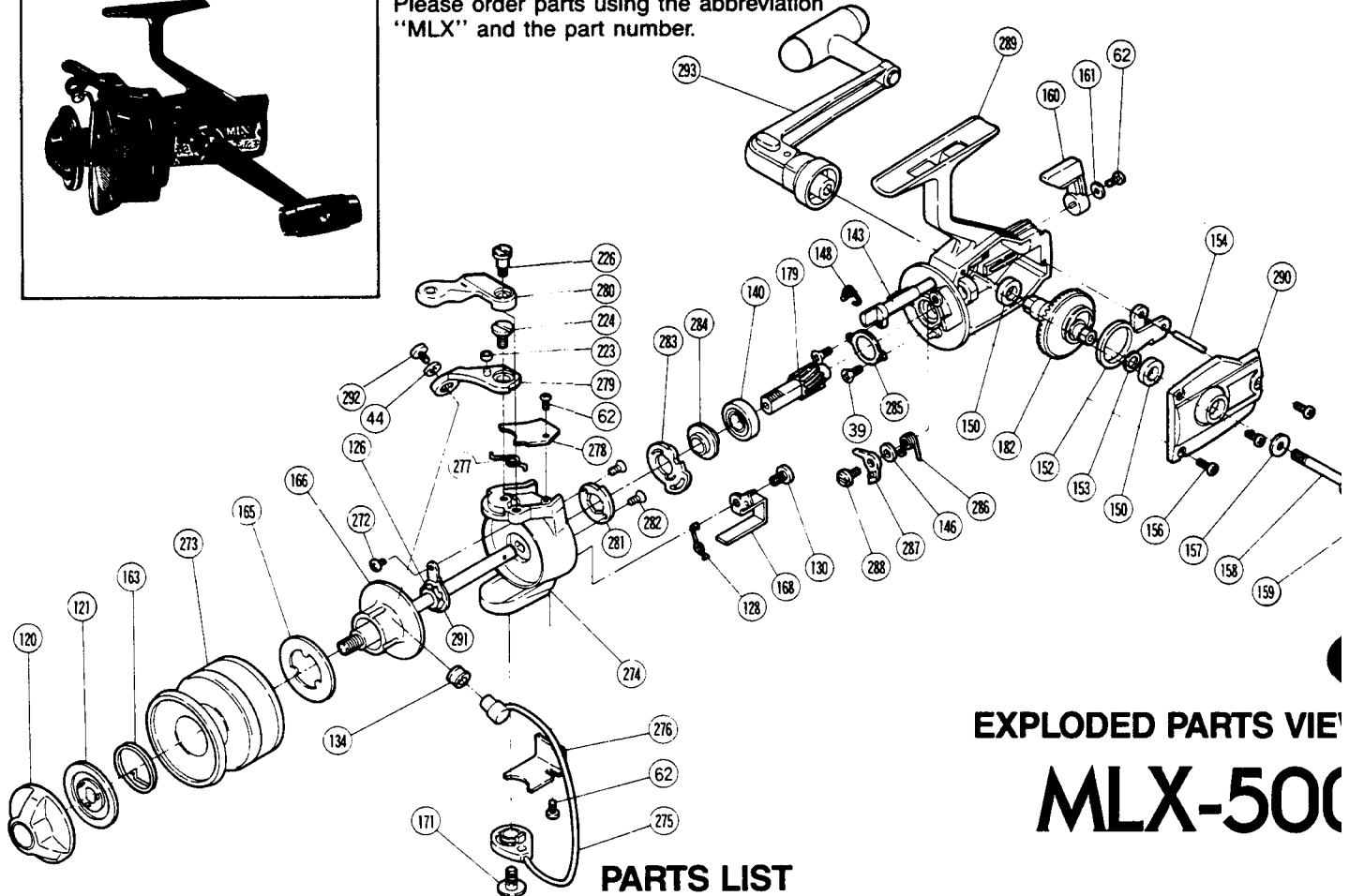
1987 REPAIR MANUAL

Shimano American Corporation, One Shimano Dr.
Irvine, CA 92718



TO ORDER:

This reel belongs to the "MLX, MLZ" series.
Please order parts using the abbreviation
"MLX" and the part number.



EXPLODED PARTS VIEW MLX-500

PARTS LIST

PART # DESCRIPTION

- 39. Retainer Screw
- 44. Lock Washer
- 62. Cover Screw
- 120. Drag Adjusting Knob
- 121. Drag Disk
- 126. Rotor Nut
- 128. Trip Lever Spring
- 130. Trip Lever Screw
- 134. Roller Line Guide
- 140. Ball Bearing
- 143. Anti Reverse Shaft
- 146. Anti Reverse Dog
Spacer
- 148. Anti Reverse Shaft
Spring
- 150. Drive Gear Bushing
- 152. Oscillation Guide
- 153. Drive Gear Spacer
- 154. Oscillation Guide Pin
- 156. Side Plate Screw
- 157. Handle Screw Lock
Washer

PART # DESCRIPTION

- 158. Handle Screw
- 159. Dust Cover
- 160. Anti Reverse Lever
- 161. Anti Reverse Lever
Lock Washer
- 163. Click Spring
- 165. Base Drag Disk
- 166. Spindle
- 168. Trip Lever
- 171. Bail Wire Screw
- 179. Pinion Gear
- 182. Drive Gear
- 223. Trigger Pin Roller
- 224. Bail Mount Screw
- 226. Trigger Screw
- 272. Rotor Lock Screw
- 273. Spool
- 274. Rotor
- 275. Bail Wire
- 276. Trip Lever Cover
- 277. Bail Spring
- 278. Bail Spring Cover

PART # DESCRIPTION

- 279. Bail Mount
- 280. Quickfire Trigger
- 281. Self Center Ratchet
- 282. Ratchet Screw
- 283. Anti Reverse Dog
Cam
- 284. Bearing Spacer
- 285. Bearing Lock
- 286. Anti Reverse Dog
Spring
- 287. Anti Reverse Dog
- 288. Anti Reverse Dog
Screw
- 289. Housing
- 290. Side Plate
- 291. Rotor Nut Lock
- 292. Line Guide Screw
- 293. Handle