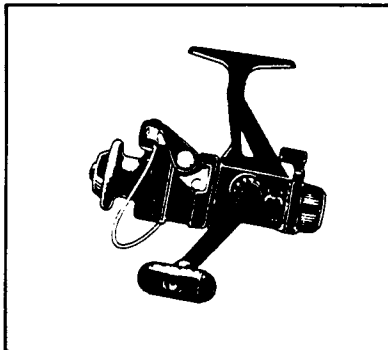


SHIMANO®

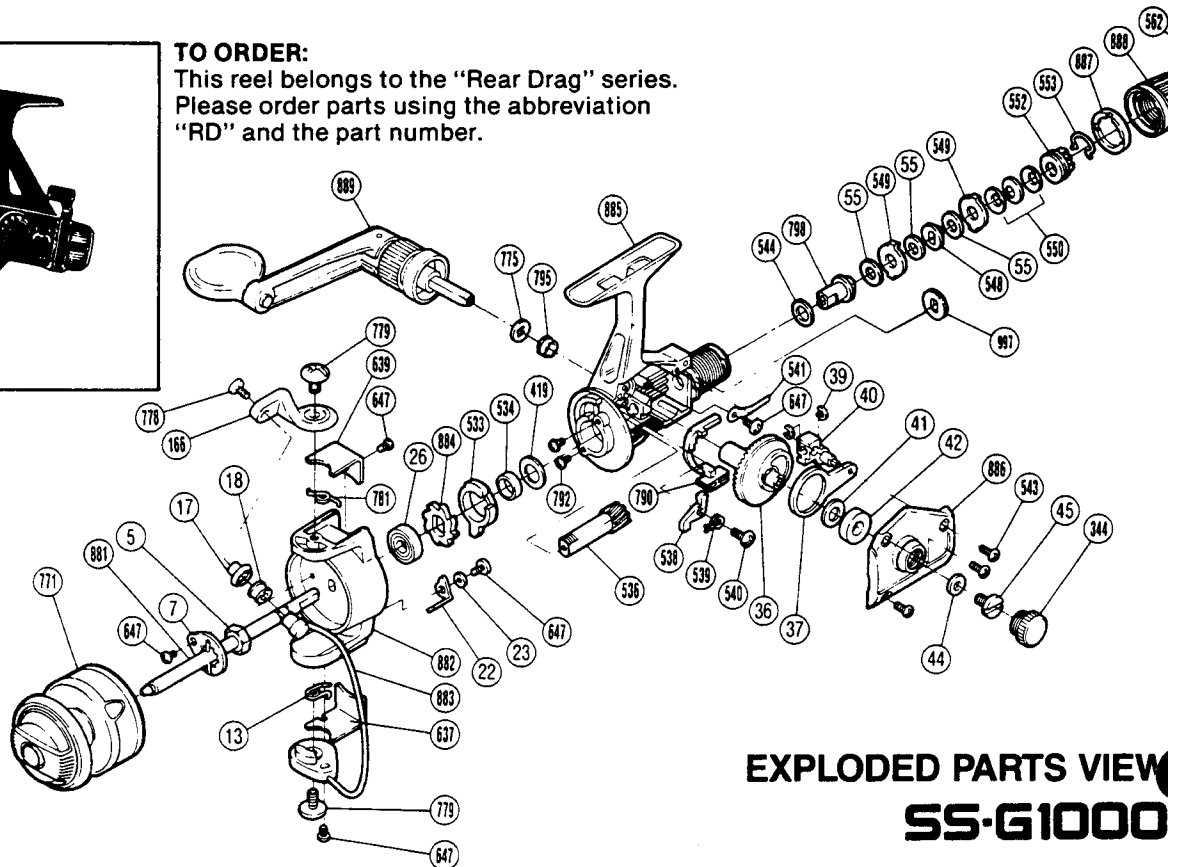
1987 REPAIR MANUAL

Shimano American Corporation, One Shimano Dr.
Irvine, CA 92718



TO ORDER:

This reel belongs to the "Rear Drag" series.
Please order parts using the abbreviation
"RD" and the part number.



EXPLODED PARTS VIEW SS-G1000

PARTS LIST

PART # DESCRIPTION

- 5. Rotor Nut
- 7. Rotor Nut Lock Plate
- 13. Lever Spring
- 17. Line Roller Washer
- 18. Line Roller
- 22. Bail Trip Lever
- 23. Trip Lever Spacer
- 26. Bail Bearing
- 36. Drive Gear
- 37. Oscillating Arm
- 39. "C" Lock
- 40. Oscillating Block
- 41. Drive Gear Washer
- 42. Bushing A
- 44. Handle Lock Washer
- 45. Handle Lock Screw
(Originally 796)
- 55. Drag Washer "C₁"
- 166. Bail Arm

PART # DESCRIPTION

- 344. Handle Screw Cap
- 419. Bushing Washer
- 533. Anti-Reverse Lock Out
- 534. Pinion Spacer
- 536. Pinion Gear
- 538. Anti-Reverse Pawl
- 539. Anti-Reverse Pawl Spring
- 540. Anti-Reverse Pawl Screw
- 541. Drag Click
- 543. Side Cover Screw
- 544. Drag Washer "C₂"
- 548. Key Washer "A"
- 549. Eared Washer "B"
- 550. Coned Disc Springs
- 552. Pressure Screw
- 553. Hold Click Spring
- 562. Drag Knob Screw
- 637. Bail Trip Cover
- 639. Bail Spring Cover

PART # DESCRIPTION

- 647. Multi Purpose Screw
- 771. Spool Assembly (Universal)
- 775. Handle Lock Spacer
- 778. Line Roller Screw
- 779. Bail Trip Cam Screw
- 781. Bail Spring
- 790. Anti-Reverse Switch
- 792. Bearing Retainer Screw
- 795. Bushing B
- 798. Drag Shaft
- 881. Main Shaft
- 882. Rotor
- 883. Bail Assembly
- 884. Anti-Reverse Ratchet
- 885. Body
- 886. Side Cover
- 887. Knob Spacer
- 888. Drag Knob
- 889. Handle Assembly
- 997. Click Gear