

# SHIMANO

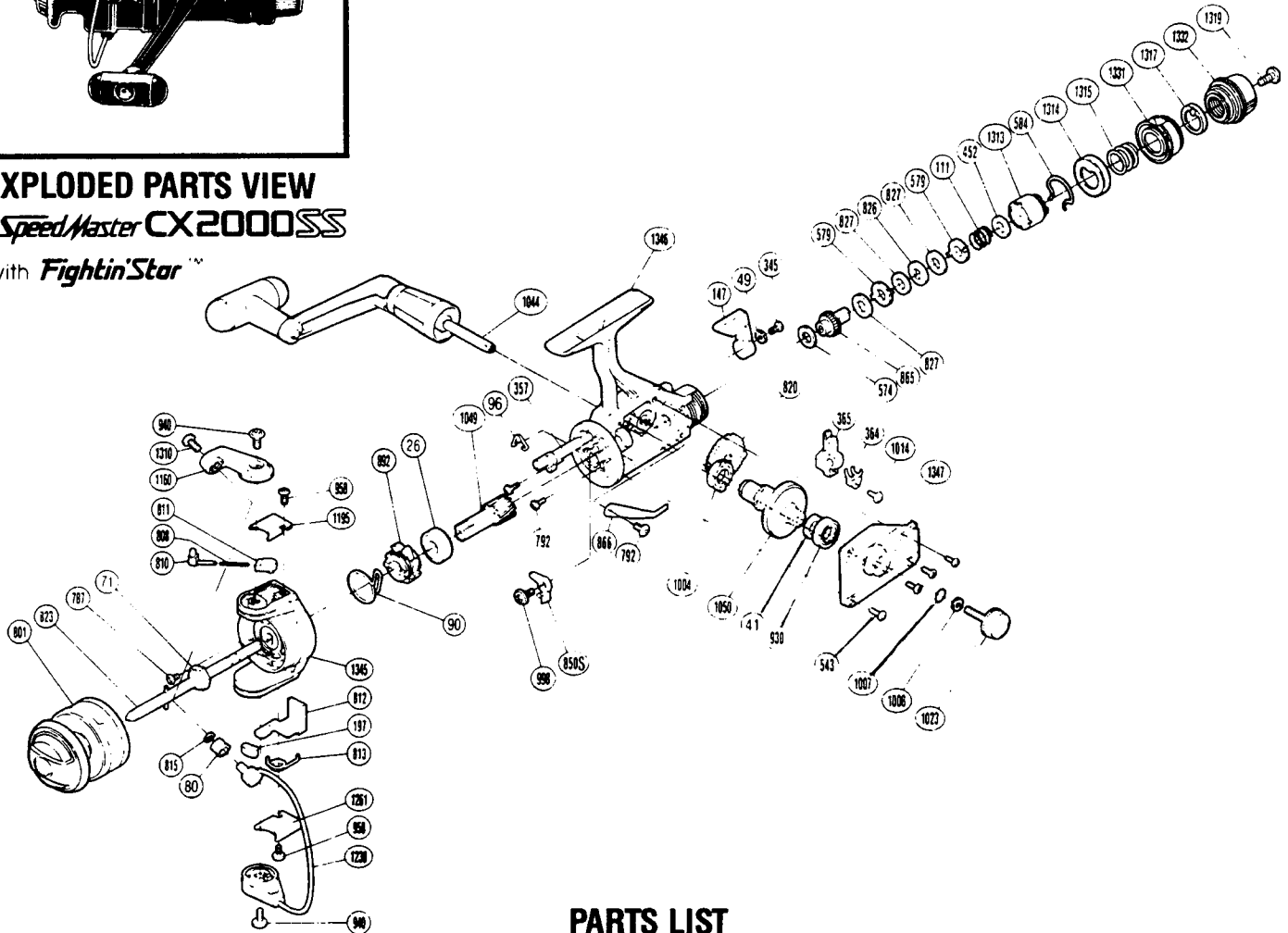
## 1988 REPAIR MANUA

Shimano American Corporation, One Shimano C  
Irvine, CA 927

### EXPLODED PARTS VIEW

*SpeedMaster CX2000SS*

with *Fightin' Star™*



### PARTS LIST

PART #	DESCRIPTION	PART #	DESCRIPTION	PART #	DESCRIPTION
RD 0026	Ball Bearing	RD 0808	Bail Spring	RD 1014	Slider Retainer Screw
RD 0041	Drive Gear Washer	RD 0810	Bail Spring Guide A	RD 1023	Handle Screw Cap
RD 0049	Lock Washer	RD 0811	Bail Spring Guide B	RD 1044	Handle Assembly
RD 0071	Rotor Nut	RD 0812	Bail Trip Lever	RD 1046	Sic Ceramic Roller
RD 0090	Anti-Reverse Pawl Spring	RD 0813	Lever Spring	RD 1049	Pinion Gear
RD 0096	Anti-Reverse Cam Spring	RD 0815	Line Roller Washer	RD 1050	Drive Gear
RD 0111	Drag (Coil) Spring	RD 0820	Oscillating Gear	RD 1160	Bail Arm
RD 0147	Anti-Reverse Lever	RD 0823	Main Shaft	RD 1195	Bail Spring Cover
RD 0197	Bail Trip Slide Cam	RD 0826	Key Washer "A"	RD 1238	Bail Assembly
RD 0345	Anti-Reverse Lever Screw	RD 0827	Drag Washer "H1"	RD 1261	Bail Trip Cover
RD 0357	Anti-Reverse Cam	RD 0850S	Anti-Reverse Pawl	RD 1310	Line Roller Screw
RD 0364	Oscillating Slider Retainer	RD 0865	Drag Shaft	RD 1313	Pressure Screw
RD 0365	Oscillating Slider	RD 0866	Drag Click	RD 1314	Pre-Set Spring Cover
RD 0452	Drag Spring Washer "A"	RD 0892	Anti-Reverse Ratchet	RD 1315	Pre-Set Spring
RD 0543	Side Cover Screw (B)	RD 0930	Ball Bearing	RD 1317	Pre-Set Cam
RD 0574	Drag Washer "C2" (White)	RD 0940	Bail Trip Cam Screw	RD 1319	Drag Knob Screw
RD 0579	Eared Washer "B"	RD 0958	Bail Trip Cover Screw	RD 1331	Pre-Set Ring
RD 0584	Hold Click Spring	RD 0998	Anti-Reverse Pawl Screw	RD 1332	Drag Knob
RD 0787	Nut Lock Screw	RD 1004	Bushing A	RD 1345	Rotor
RD 0792	Bearing Retainer Screw	RD 1007	Lock Washer Retainer	RD 1346	Body
RD 0801	Spool Assembly (Universal)	RD 1008	Handle Lock Washer	RD 1347	Side Cover