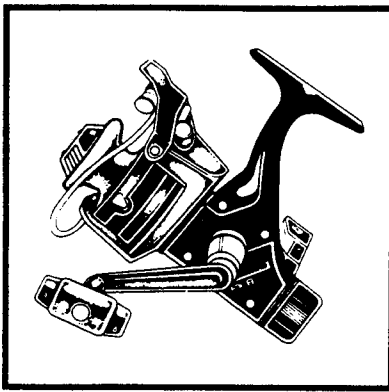


SHIMANO

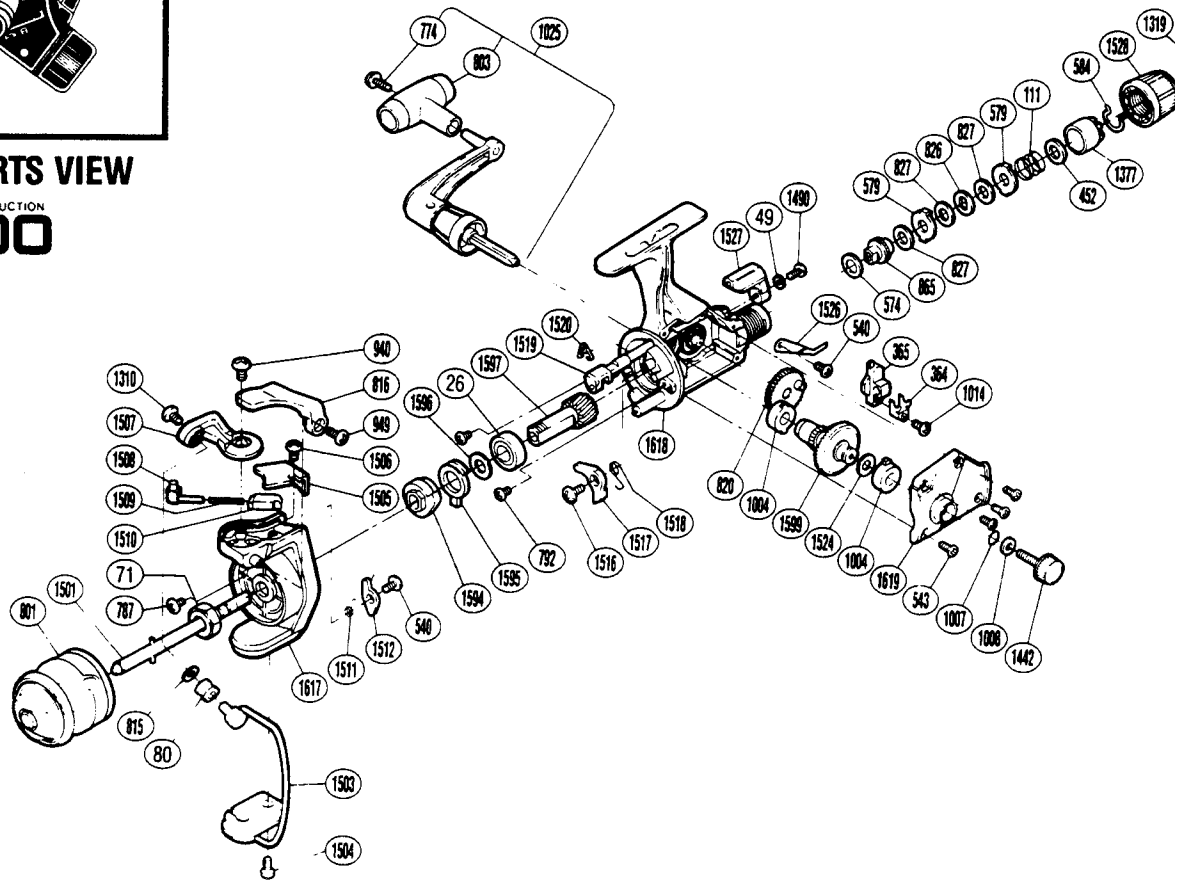
1988 REPAIR MANUAL

Shimano American Corporation, One Shimano Dr
Irvine, CA 9271



EXPLODED PARTS VIEW

LIGHT SPECIAL GRAPHITE CONSTRUCTION
FX-B200



PARTS LIST

PART #	DESCRIPTION
RD 0026	Ball Bearing
RD 0049	Lock Washer
RD 0071	Rotor Nut
RD 0080	Line Roller
RD 0111	Drag (Coil) Spring
RD 0364	Oscillating Slider Retainer
RD 0365	Oscillating Slider
RD 0452	Drag Spring Washer "A"
RD 0540	Anti-Reverse Pawl Screw
RD 0543	Side Cover Screw (B)
RD 0574	Drag Washer "C2" (White)
RD 0579	Eared Washer "B"
RD 0584	Hold Click Spring
RD 0774	Handle Knob Screw
RD 0787	Nut Lock Screw
RD 0792	Bearing Retainer Screw
RD 0801	Spool Assembly (Universal)
RD 0803	Handle Knob
RD 0815	Line Roller Washer
RD 0816	Quick-Fire II Trigger
RD 0820	Oscillating Gear
RD 0826	Key Washer "A"

PART #	DESCRIPTION
RD 0827	Drag Washer "H1"
RD 0865	Drag Shaft
RD 0940	Bail Trip Cam Screw
RD 0949	Trigger Screw
RD 1004	Bushing A
RD 1007	Lock Washer Retainer
RD 1008	Handle Lock Washer
RD 1014	Slider Retainer Screw
RD 1025	Handle Assembly
RD 1310	Line Roller Screw
RD 1319	Drag Knob Screw
RD 1377	Pressure Screw
RD 1442	Handle Screw Cap
RD 1490	Anti-Reverse Lever Screw
RD 1501	Main Shaft
RD 1503	Bail Assembly
RD 1504	Bail Hold Cover Screw
RD 1505	Bail Spring Cover
RD 1506	Bail Spring Cover Screw
RD 1507	Bail Arm
RD 1508	Bail Spring Guide A
RD 1509	Bail Spring

PART #	DESCRIPTION
RD 1510	Bail Spring Guide B
RD 1511	Lever Spring
RD 1512	Bail Trip Lever
RD 1516	Anti-Reverse Pawl Screw
RD 1517	Anti-Reverse Pawl
RD 1518	Anti-Reverse Pawl Spring
RD 1519	Anti-Reverse Cam
RD 1520	Anti-Reverse Cam Spring
RD 1524	Drive Gear Washer
RD 1526	Drag Click
RD 1527	Anti-Reverse Lever
RD 1528	Drag Knob
RD 1594	Anti-Reverse Ratchet
RD 1595	Anti-Reverse Lock Out
RD 1596	Bushing Washer
RD 1597	Pinion Gear
RD 1599	Drive Gear
RD 1617	Rotor
RD 1618	Body
RD 1619	Side Cover