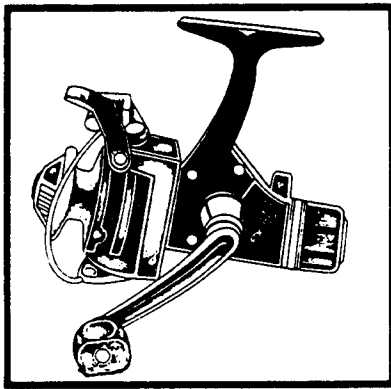


SHIMANO

1988 REPAIR MANUAL

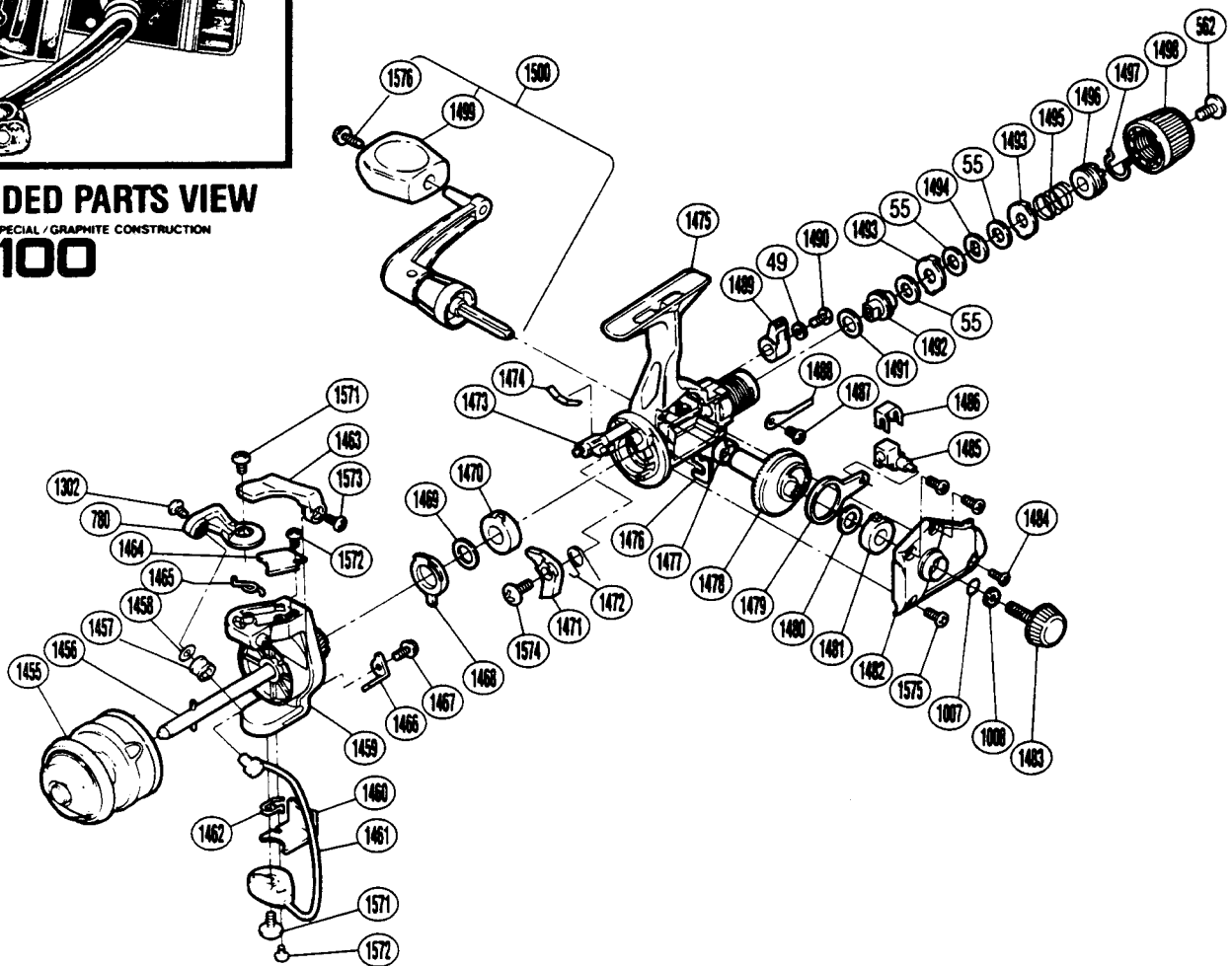
Shimano American Corporation, One Shimano
Irvine, CA 92



EXPLODED PARTS VIEW

ULTRA LIGHT SPECIAL / GRAPHITE CONSTRUCTION

FX100



PARTS LIST

PART #	DESCRIPTION	PART #	DESCRIPTION	PART #	DESCRIPTION
RD 0049	Lock Washer	RD 1468	Anti-Reverse Lock Out	RD 1488	Drag Click
RD 0055	Drag Washer "C(1)" (Black)	RD 1469	Bushing Washer	RD 1489	Anti-Reverse Lever
RD 0562	Drag Programmer Screw	RD 1470	Bushing	RD 1490	Anti-Reverse Lever Screw
RD 0780	Bail Arm	RD 1471	Anti-Reverse Pawl	RD 1491	Drag Washer "H2"
RD 1007	Lock Washer Retainer	RD 1472	Anti-Reverse Pawl Spring	RD 1492	Drag Shaft
RD 1008	Handle Lock Washer	RD 1473	Anti-Reverse Cam	RD 1493	Eared Washer "B"
RD 1302	Line Roller Screw	RD 1474	Anti-Reverse Cam Spring	RD 1494	Key Washer "A"
RD 1455	Spool Assembly	RD 1475	Body	RD 1495	Drag Coil Spring
RD 1456	Main Shaft	RD 1476	Rotor Lock	RD 1496	Pressure Screw
RD 1457	Line Roller	RD 1477	Bushing B	RD 1497	Hold Click Spring
RD 1458	Line Roller Washer	RD 1478	Drive Gear	RD 1498	Drag Knob
RD 1459	Rotor	RD 1479	Oscillating Arm	RD 1499	Handle Knob
RD 1460	Bail Trip Cover	RD 1480	Drive Gear Washer	RD 1500	Handle Assembly
RD 1461	Bail Assembly	RD 1481	Bushing A	RD 1571	Bail Trip Cam Screw
RD 1462	Lever Spring	RD 1482	Side Cover	RD 1572	Bail Trip Cover Screw
RD 1463	Quick-Fire II Trigger	RD 1483	Handle Screw Cap	RD 1573	Trigger Screw
RD 1464	Bail Spring Cover	RD 1484	Side Cover Screw (B)	RD 1574	Anti-Reverse Pawl Screw
RD 1465	Bail Spring	RD 1485	Oscillating Block	RD 1575	Side Cover Screw (A)
RD 1466	Bail Trip Lever	RD 1486	Oscillating Block Retainer	RD 1576	Handle Knob Screw
RD 1467	Trip Lever Screw	RD 1487	Drag Click Screw		