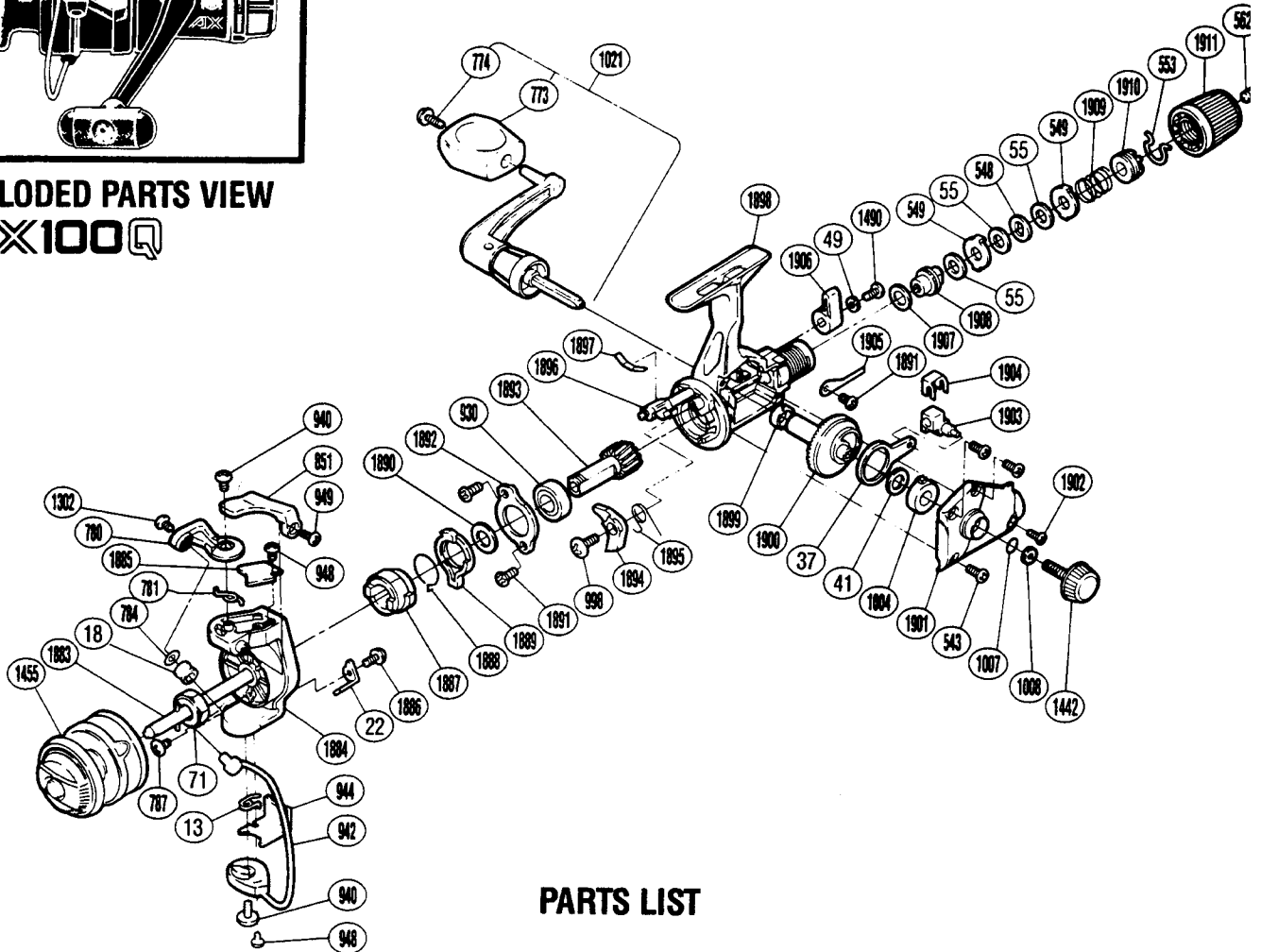


**EXPLODED PARTS VIEW**  
**AX100Q**



**PARTS LIST**

**PART # DESCRIPTION**

- RD 0013 (Trip) Lever Spring
- RD 0018 Line Roller
- RD 0022 (Bail) Trip Lever
- RD 0037 Oscillating Arm
- RD 0041 Drive Gear Washer
- RD 0049 Lock Washer
- RD 0055 Drag Washer "C(1)" (Black)
- RD 0071 Rotor Nut
- RD 0543 Side Cover Screw (B)
- RD 0548 Key Washer "A"
- RD 0549 Eared Washer "B"
- RD 0553 Hold Click Spring
- RD 0562 Drag Programmer Screw
- RD 0773 Handle Knob
- RD 0774 Handle Knob Screw
- RD 0780 Bail Arm
- RD 0781 Bail Spring
- RD 0784 Line Roller Washer
- RD 0787 Nut Lock Screw
- RD 0851 Quick-Fire II Trigger
- RD 0930 Ball Bearing
- RD 0940 Bail Trip Cam Screw

**PART # DESCRIPTION**

- RD 0942 Bail Assembly
- RD 0944 Bail Trip Cover
- RD 0948 Bail Trip Cover Screw
- RD 0949 Trigger Screw
- RD 0998 Anti-Reverse Pawl Screw
- RD 1004 Bushing A
- RD 1007 Lock Washer Retainer
- RD 1008 Handle Lock Washer
- RD 1021 Handle Assembly
- RD 1302 Line Roller Screw
- RD 1442 Handle Screw Cap
- RD 1455 Spool Assembly
- RD 1490 Anti-Reverse Lever Screw
- RD 1883 Main Shaft
- RD 1884 Rotor
- RD 1885 Bail Spring Cover
- RD 1886 Trip Lever Screw
- RD 1887 Anti-Reverse Ratchet
- RD 1888 Anti-Reverse Lock Out Spring
- RD 1889 Anti-Reverse Lock Out
- RD 1890 Bushing Washer
- RD 1891 Multi Purpose Screw

**PART # DESCRIPTION**

- RD 1892 Bearing Retainer
- RD 1893 Pinion Gear
- RD 1894 Anti-Reverse Pawl
- RD 1895 Anti-Reverse Pawl Spring
- RD 1896 Anti-Reverse Cam
- RD 1897 Anti-Reverse Cam Spring
- RD 1898 Body
- RD 1899 Bushing B
- RD 1900 Drive Gear
- RD 1901 Side Cover
- RD 1902 Side Cover Screw (B)
- RD 1903 Oscillating Block
- RD 1904 Oscillating Block Retainer
- RD 1905 Drag Click
- RD 1906 Anti-Reverse Lever
- RD 1907 Drag Washer "E"
- RD 1908 Drag Shaft
- RD 1909 Drag Coil Spring
- RD 1910 Pressure Screw
- RD 1911 Drag Knob