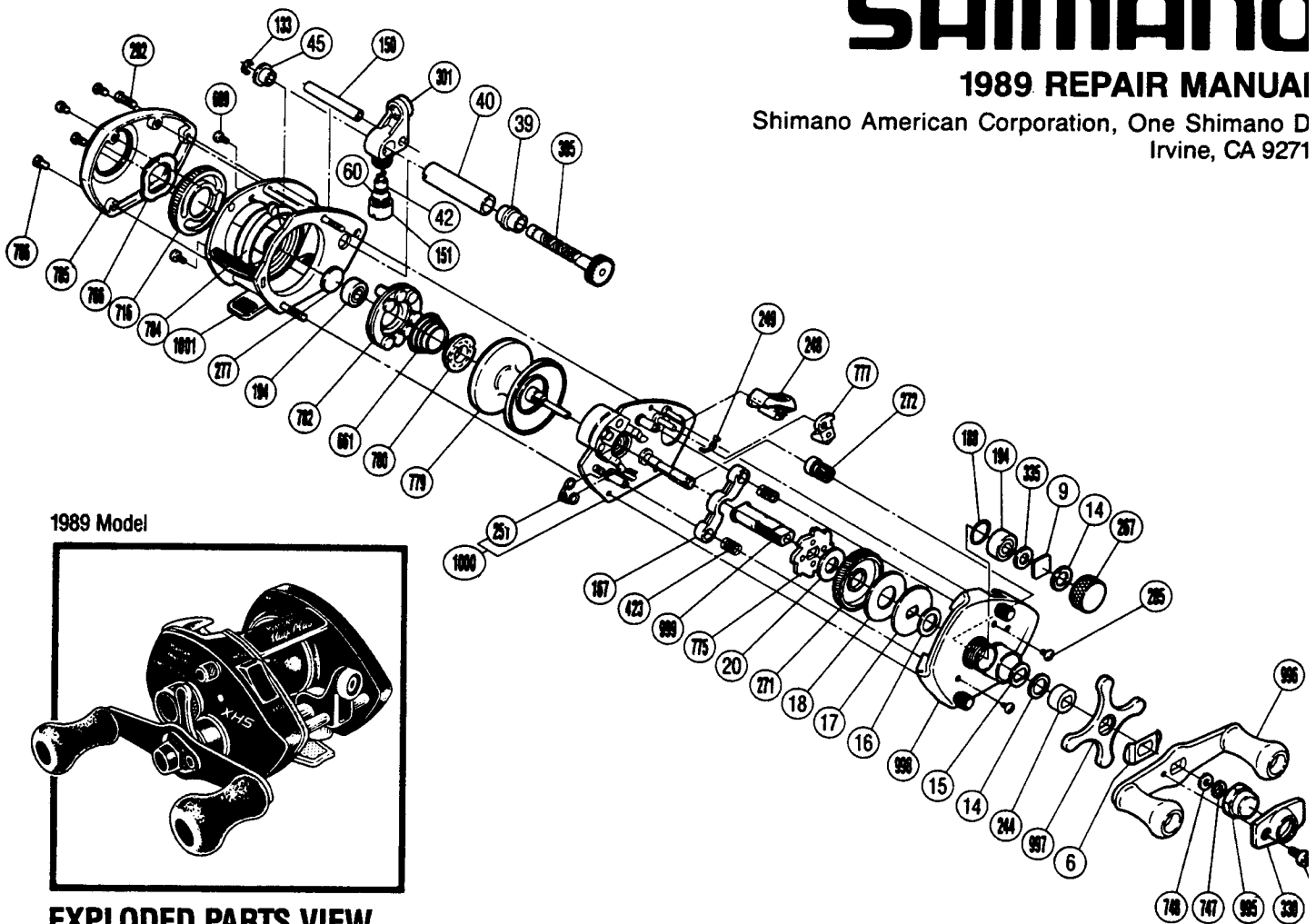


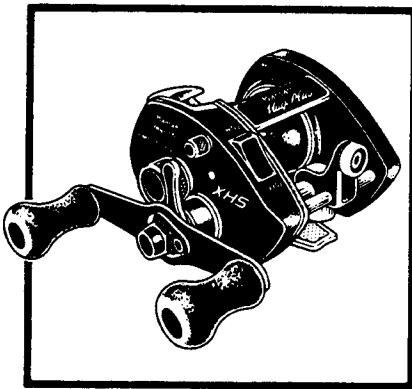
SHIMANO

1989 REPAIR MANUAL

Shimano American Corporation, One Shimano D
Irvine, CA 9271



1989 Model



EXPLODED PARTS VIEW Bantam **MARK** *Plus* **250X**

PARTS LIST

PART # DESCRIPTION

BNT 0006	Friction Washer (A)
BNT 0009	Spacer (A)
BNT 0014	Friction Washer (B)
BNT 0015	Drag Spring Washer
BNT 0016	Friction Washer (C)
BNT 0017	Key Washer
BNT 0018	Drag Washer
BNT 0020	Drive Shaft Washer (B)
BNT 0039	Worm Bearing (A)
BNT 0040	Level Wind Guard
BNT 0042	Line Guide Pawl
BNT 0045	Worm Bearing (B)
BNT 0060	Spacer (Optional)
BNT 0133	Worm Shaft Retainer
BNT 0150	(Line Guide) Stabilizer Bar
BNT 0151	Pawl Cap
BNT 0167	(Pinion) Yoke
BNT 0188	O Ring
BNT 0194	Ball Bearing

PART # DESCRIPTION

BNT 0244	Bushing (B)
BNT 0248	Anti-Reverse Switch
BNT 0249	(Anti-Reverse) Switch Spring
BNT 0251	Retractor Spring
BNT 0267	Cast Control Cap
BNT 0271	Drive Gear
BNT 0272	Pinion Gear (Assembly)
BNT 0277	Spacer (B)
BNT 0285	Set Plate Screw
BNT 0292	Stabilizer Bar Screw (B)
BNT 0301	Line Guide
BNT 0305	Worm Shaft Assembly
BNT 0330	Handle Nut (Lock) Plate
BNT 0335	Bearing Washer (A)
BNT 0423	Pinion Yoke Spring
BNT 0609	Drive Shaft Retainer Screw
BNT 0661	Magnet Retainer Spring
BNT 0716	Magnet Control Dial
BNT 0747	Drive Shaft Retainer

PART # DESCRIPTION

BNT 0748	Drive Shaft Washer "A"
BNT 0766	Dial Friction Washer
BNT 0770	Handle Nut Plate Screw
BNT 0775	Anti-Reverse Ratchet
BNT 0777	Anti-Reverse Pawl
BNT 0779	Spool
BNT 0780	Magnet Retainer Lock
BNT 0782	Magnet Retainer
BNT 0784	Magnet Retainer Case
BNT 0785	Left Side Plate
BNT 0786	Left Side Plate Screw
BNT 0995	Handle Nut
BNT 0996	Handle Assembly
BNT 0997	Star Drag
BNT 0998	Right Side Plate
BNT 0999	Drive Shaft
BNT 1000	Set Plate Assembly
BNT 1001	Frame