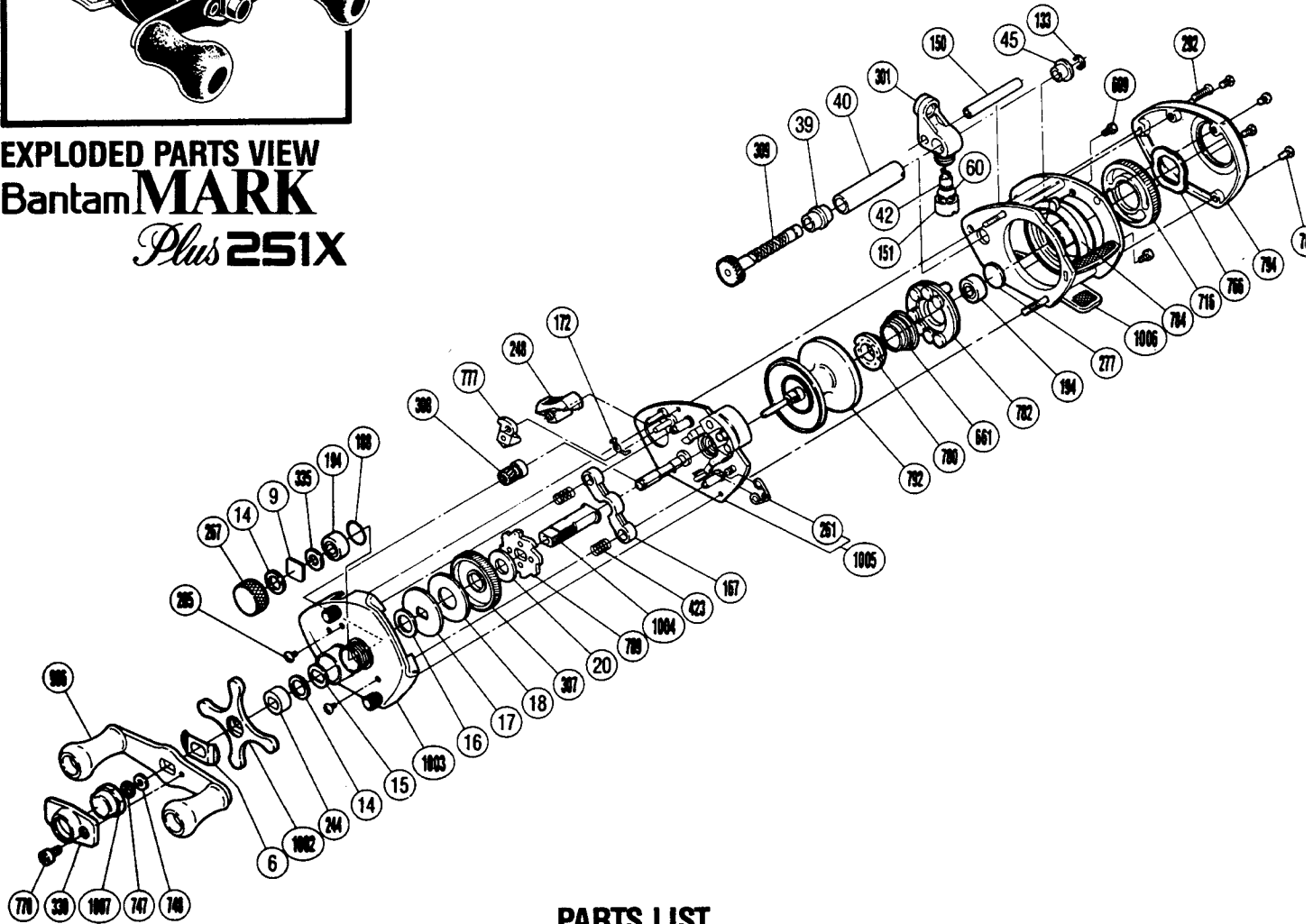


**EXPLODED PARTS VIEW**  
**Bantam** **MARK**  
*Plus* **251X**



### PARTS LIST

**PART # DESCRIPTION**

- BNT 0006 Friction Washer (A)
- BNT 0009 Spacer (A)
- BNT 0014 Friction Washer (B)
- BNT 0015 Drag Spring Washer
- BNT 0016 Friction Washer (C)
- BNT 0017 Key Washer
- BNT 0018 Drag Washer
- BNT 0020 Drive Shaft Washer (B)
- BNT 0039 Worm Bearing (A)
- BNT 0040 Level Wind Guard
- BNT 0042 Line Guide Pawl
- BNT 0045 Worm Bearing (B)
- BNT 0060 Spacer (Optional)
- BNT 0133 Worm Shaft Retainer
- BNT 0150 (Line Guide) Stabilizer Bar
- BNT 0151 Pawl Cap
- BNT 0167 (Pinion) Yoke
- BNT 0172 (Anti-Reverse) Switch Spring
- BNT 0188 O Ring

**PART # DESCRIPTION**

- BNT 0194 Ball Bearing
- BNT 0244 Bushing (B)
- BNT 0248 Anti-Reverse Switch
- BNT 0261 Retractor Spring
- BNT 0267 Cast Control Cap
- BNT 0277 Spacer (B)
- BNT 0285 Set Plate Screw
- BNT 0292 Stabilizer Bar Screw (B)
- BNT 0301 Line Guide
- BNT 0307 Drive Gear
- BNT 0308 Pinion Gear (Assembly)
- BNT 0309 Worm Shaft Assembly
- BNT 0330 Handle Nut (Lock) Plate
- BNT 0335 Bearing Washer (A)
- BNT 0423 Yoke Spring
- BNT 0609 Drive Shaft Retainer Screw
- BNT 0661 Magnet Retainer Spring
- BNT 0716 Magnet Control Dial
- BNT 0747 Drive Shaft Retainer

**PART # DESCRIPTION**

- BNT 0748 Drive Shaft Washer "A"
- BNT 0766 Dial Friction Washer
- BNT 0770 Handle Nut Plate Screw
- BNT 0777 Anti-Reverse Pawl
- BNT 0780 Magnet Retainer Lock
- BNT 0782 Magnet Retainer
- BNT 0784 Magnet Retainer Case
- BNT 0786 Left Side Plate Screw
- BNT 0789 Anti-Reverse Ratchet
- BNT 0792 Spool
- BNT 0794 Right Side Plate
- BNT 0996 Handle Assembly
- BNT 1002 Star Drag
- BNT 1003 Left Side Plate
- BNT 1004 Drive Shaft
- BNT 1005 Set Plate Assembly
- BNT 1006 Frame
- BNT 1007 Handle Nut