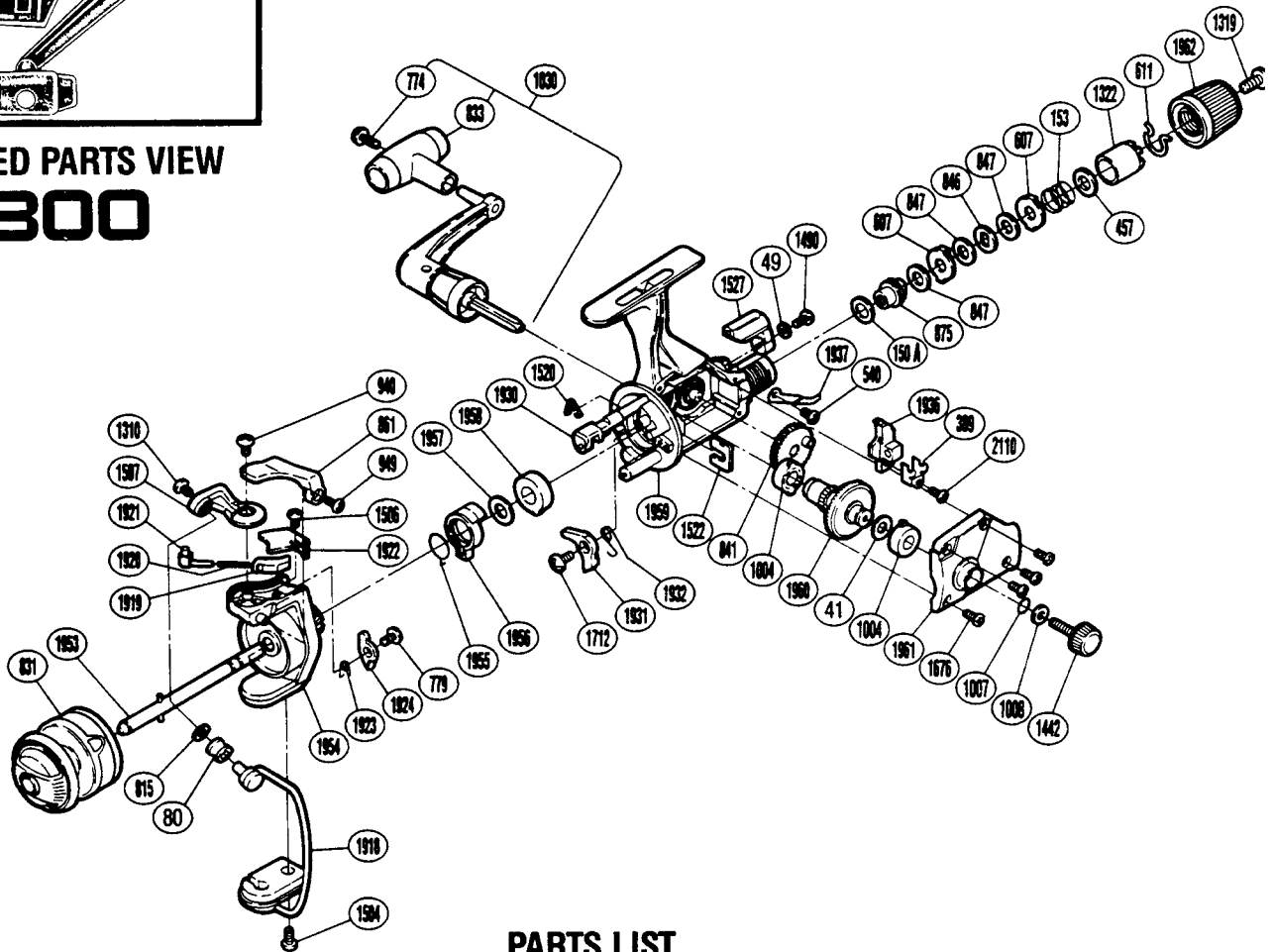


**EXPLODED PARTS VIEW**  
**FX300**



**PARTS LIST**

PART #	DESCRIPTION	PART #	DESCRIPTION	PART #	DESCRIPTION
RD 0041	Drive Gear Washer	RD 0949	Trigger Screw	RD 1921	Bail Spring Guide A
RD 0049	Lock Washer	RD 1004	Bushing A	RD 1922	Bail Spring Cover
RD 0080	Line Roller	RD 1007	Lock Washer Retainer	RD 1923	Lever Spring
RD 0150A	Drag Washer "C2" (White)	RD 1008	Handle Lock Washer	RD 1924	Bail Trip Lever
RD 0153	Drag (Coil) Spring	RD 1030	Handle Assembly	RD 1930	Anti-Reverse Cam
RD 0389	Oscillating Slider Retainer	RD 1310	Line Roller Screw	RD 1931	Anti-Reverse Pawl
RD 0457	Drag Spring Washer "A"	RD 1319	Drag Knob Screw	RD 1932	Anti-Reverse Pawl Spring
RD 0540	Anti-Reverse Pawl Screw	RD 1322	Pressure Screw	RD 1936	Oscillating Slider
RD 0607	Eared Washer "B"	RD 1442	Handle Screw Cap	RD 1937	Drag Click
RD 0611	Hold Click Spring	RD 1490	Anti-Reverse Lever Screw	RD 1953	Main Shaft
RD 0774	Handle Knob Screw	RD 1504	Bail Hold Cover Screw	RD 1954	Rotor
RD 0779	Bail Trip Cam Screw	RD 1506	Bail Spring Cover Screw	RD 1955	Anti-Reverse Lock Out Spring
RD 0815	Line Roller Washer	RD 1507	Bail Arm	RD 1956	Anti-Reverse Lock Out
RD 0831	Spool Assembly (Universal)	RD 1520	Anti-Reverse Cam Spring	RD 1957	Bushing Washer
RD 0833	Handle Knob	RD 1522	Rotor Lock	RD 1958	Bushing
RD 0841	Oscillating Gear	RD 1527	Anti-Reverse Lever	RD 1959	Body
RD 0846	Key Washer "A"	RD 1676	Side Cover Screw	RD 1960	Drive Gear
RD 0847	Drag Washer "H1"	RD 1712	Anti-Reverse Pawl Screw	RD 1961	Side Cover
RD 0861	Quick-Fire II Trigger	RD 1918	Bail Assembly	RD 1962	Drag Knob
RD 0875	Drag Shift	RD 1919	Bail Spring Guide B	RD 2110	Slider Retainer Screw
RD 0940	Bail Trip Cam Screw	RD 1920	Bail Spring		