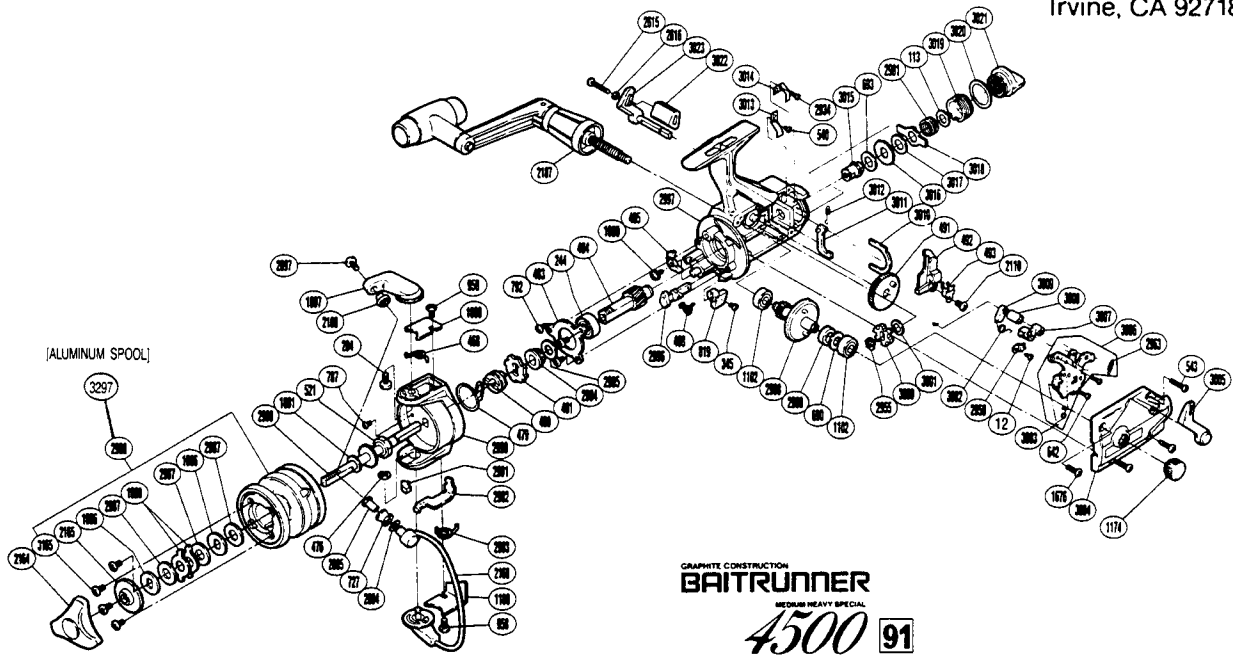


**EXPLODED PARTS VIEW**

**SHIMANO®**

**1992 REPAIR MANUAL**

Shimano American Corporation, One Shimano Dr.  
Irvine, CA 92718



**TO ORDER: USE RD PREFIX  
WITH PART NUMBER**

**PARTS LIST**

RD #	DESCRIPTION	RD #	DESCRIPTION	RD #	DESCRIPTION
0012	Shaft Retainer Screw	1091	Spool Washer	2995	Bushing Washer
0113	Tension Spring Washer "B"	1097	Bail Arm	2996	Anti-Reverse Cam
0204	Bail Arm Screw	1098	Bail Spring Cover	2997	Body
0244	Ball Bearing	1100	Bail Trip Cover	2998	Drive Gear
0345	Anti-Reverse Lever Screw	1102	Ball Bearing	2999	Drive Gear Spacer
0468	Bail Spring	1174	Handle Screw Cap	3000	BaitRunner Ratchet
0476	"E" Lock	1676	Side Cover Screw A	3001	Ratchet Spacer
0479	Anti-Reverse Pawl Spring	2094	Line Roller Spacer	3002	Clutch Spring
0480	Anti-Reverse Spring Holder	2095	Line Roller Bushing	3003	Clutch Pawl Spring
0481	Anti-Reverse Ratchet	2097	Line Roller Screw	3004	Side Cover
0483	Bearing Retainer	2110	Slider Retainer Screw	3005	BaitRunner Lever Arm (L)
0484	Pinion Gear	2164	Drag Knob	3006	Clutch Plate Assembly
0485	Anti-Reverse Pawl	2165	Seal Plate	3007	Clutch Arm
0488	Anti-Reverse Cam Spring	2168	Bail Assembly	3008	Clutch Cam Spacer
0491	Oscillating Gear	2169	Line Roller Washer	3009	Clutch Cam
0492	Oscillating Slider	2187	Handle Assembly	3010	Dial Retainer
0493	Oscillating Slider Retainer	2615	Bait Runner Lever Screw	3011	BaitRunner Pawl
0521	Rotor Nut	2616	Lock Washer	3012	BaitRunner Pawl Spring
0540	Pawl Guide Screw	2934	Dial Click Screw	3013	BaitRunner Pawl Guide
0543	Side Cover Screw (B)	2955	"C" Lock	3014	Dial Click
0642	Clutch Plate Screw	2959	Lever Shaft Retainer	3015	Free Spool Tension Shaft
0690	Drive Gear Washer	2963	BaitRunner Click Spring	3016	Click Gear
0693	Free Spool Tension Washer (A)	2981	Free Spool Tension Spring	3017	Free Spool Tension Washer
0727	Line Roller	2987	Drag Washer	3018	Eared Washer "Brs"
0787	Nut Lock Screw	2988	Spool Assembly	3019	Free Spool Tension Dial
0792	Bearing Retainer Screw	2989	Main Shaft	3020	Dial Spacer
0819	Anti-Reverse Lever	2990	Rotor	3021	BaitRunner Tension Dial
0958	Bail Trip Cover Screw	2991	Bail Trip Slide Cam	3022	BaitRunner Lever Bridge
1000	Anti-Reverse Pawl Screw	2992	Bail Trip Lever	3023	BaitRunner Lever Arm (R)
1086	Key Washer	2993	Lever Spring	3165	Seal Plate Screw
1088	Eared Washer	2994	Pinion Spacer	3297	Aluminum Spool