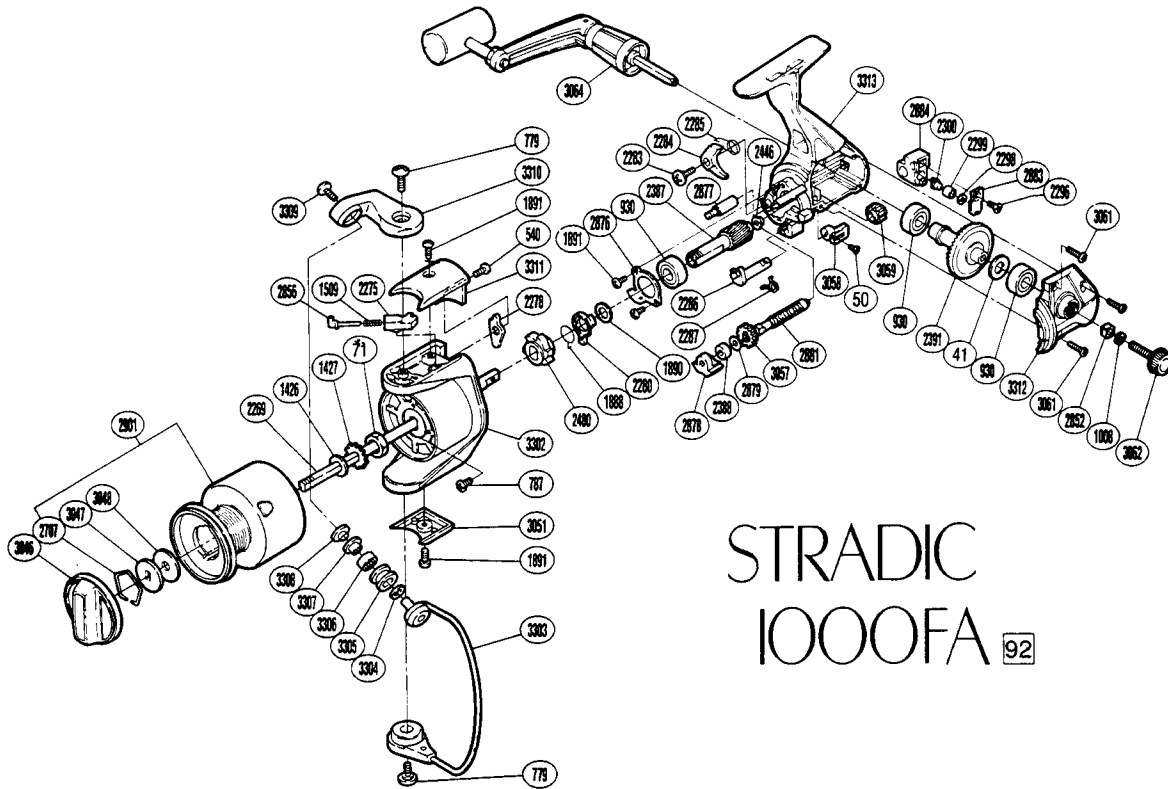


SHIMANO®

1992 REPAIR MANUAL

Shimano American Corporation, One Shimano Dr.
Irvine, CA 92718



STRADIC 1000FA 92

RD No.	PARTS NAMES	RD No.	PARTS NAMES	RD No.	PARTS NAMES
0041	Drive Gear Washer	2299	Oscillating Slider Bushing	3061	Side Cover Screw
0050	Anti-Reverse Lever Screw	2300	Oscillating Pawl	3062	Handle Screw Cap
0071	Rotor Nut	2387	Pinion Gear	3064	Handle Assembly
0540	Bail Trip Lever Screw	2388	Ball Bearing	3302	Rotor
0779	Bail Trip Cam Screw	2391	Drive Gear	3303	Bail Assembly
0787	Nut Lock Screw	2446	Bushing	3304	Bearing Spacer
0930	Ball Bearing	2480	Anti-Reverse Ratchet	3305	SiC Ceramic Roller
1008	Handle Lock Washer	2707	Drag Washers Retainer	3306	Line Roller Bearing
1426	Spool Washer	2852	Handle Screw Lock	3307	Line Roller Bushing
1427	Spool Support	2856	Bail Spring Guide (A)	3308	Line Roller Washer
1509	Bail Spring	2876	Bearing Retainer	3309	Line Roller Screw
1888	Anti-Reverse Lock Out Spring	2877	Idle Gear (B) Shaft	3310	Bail Arm
1890	Bushing Washer	2878	Worm Bearing	3311	Bail Spring Cover
1891	Multi Purpose Screw	2879	Worm Shaft Spacer	3312	Side Cover
2269	Main Shaft	2881	Worm Shaft	3313	Body
2275	Bail Spring Guide (B)	2883	Oscillating Pawl Cover		
2278	Bail Trip Lever	2884	Oscillating Slider		
2280	Anti-Reverse Lock Out	2901	Spool Assembly		
2283	Anti-Reverse Pawl Screw	3046	Drag Knob		
2284	Anti-Reverse Pawl	3047	Key Washer		
2285	Anti-Reverse Pawl Spring	3048	Drag Washer		
2286	Anti-Reverse Cam	3051	Rotor Side Cover		
2287	Anti-Reverse Cam Spring	3057	Idle Gear (A)		
2296	Slider Retainer Screw	3058	Anti-Reverse Lever		
2298	Spacer	3059	Idle Gear (B)		

Prices and specifications subject to change without notice

(030314)