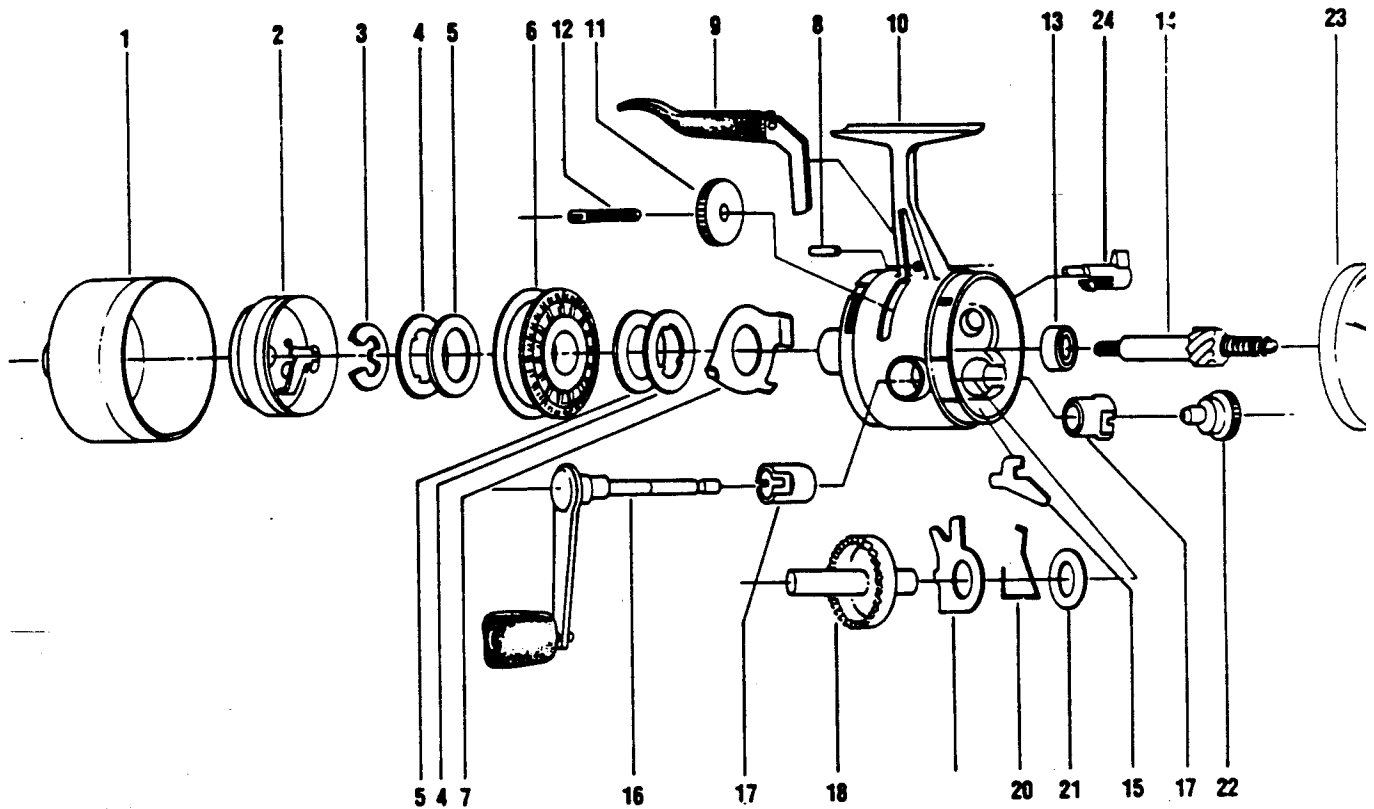


ZEBCO® 44 CLASSIC



Key No.	Part No.	Description	Price
1	JY324-11	FRONT COVER ASSY.	6.09
2	JY310-2	SPINNERHEAD	5.33
3	GZ034-1	SPOOL RETAINER CLIP	.57
4	JY040	SPOOL WASHER	.77
5	JY108	FLAT WASHER, DRAG	.38
6	JY021	SPOOL	2.14
6	JY321-8H	WOUND SPOOL 8# MONO HP	5.21
7	KJ027	CLUTCH RING	1.66
8	CJ172-3	FINGER BRAKE PIN	.56
9	KJ350	FINGER BRAKE	2.00
10	KJ301	BODY ASSY.	12.05
11	KJ032	CLUTCH WHEEL	4.02
12	BJ054-2	CLUTCH SCREW	.66
13	RY030	BALL BEARING	6.63
14	KJ315	CENTER SHAFT ASSY.	6.89
15	HJ060	ANTI-REVERSE PAWL	.56
16	KJ318	CRANK HANDLE ASSY.	6.60
17	CJ026	CRANK BEARING	1.23
18	CJ012-3	CRANK GEAR	3.50
19	CJ014	ANTI-REVERSE DRAG	.68
20	CJ061	ANTI-REVERSE PAWL SPRING	.36
21	CJ106	FLAT WASHER	.36
22	KJ068	CRANK ROD NUT	1.10
23	KJ323	BACK COVER	6.14
24	RY002	ANTI-REVERSE KNOB	.74

Prices subject to change without notice. Prices do not include postage and handling.

PLEASE ORDER BY PART NUMBER

Rev. 5/93

Zebco Division Brunswick Corporation, Box 270, Tulsa, OK 74101 USA 918-836-5581

