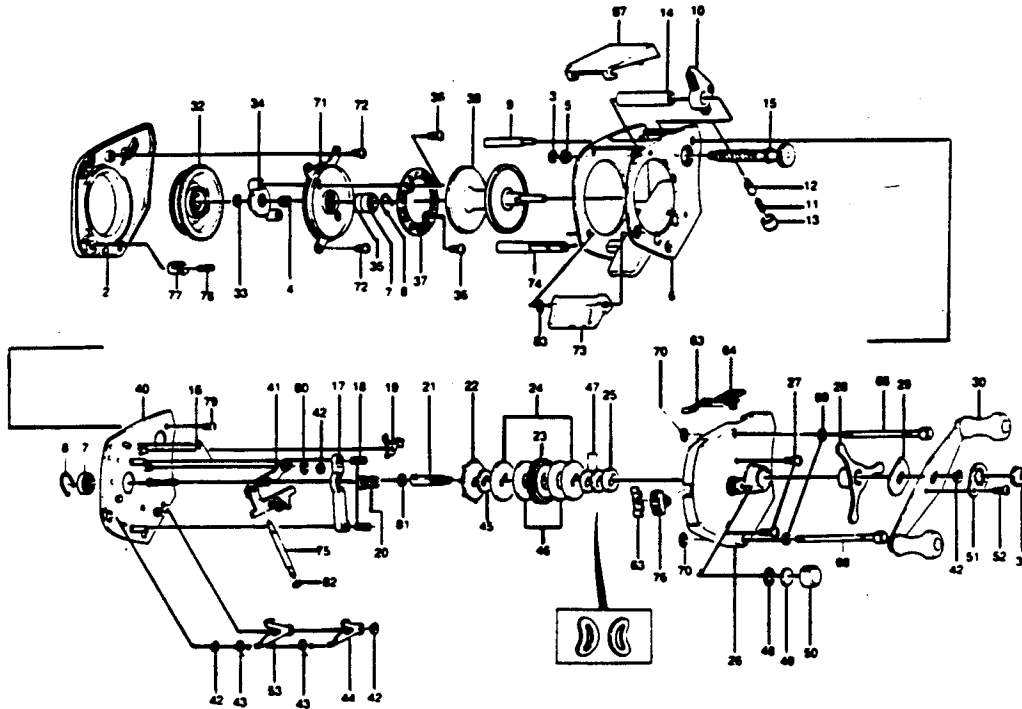


# QUANTUM QD1610

# DISCONTINUED



| Key No. | Part No. | Description              | Price | Key No. | Part No. | Description            | Price |
|---------|----------|--------------------------|-------|---------|----------|------------------------|-------|
|         | KX4000   | SPARE PARTS KIT W/WRENCH | 4.60  | 37      | CX4257   | MAGNET RETAINER        | 8.59  |
| 2       | KX4101   | LEFT SIDE PLATE          | 7.49  | 38      | KX4251   | SPOOL                  | 15.36 |
| 3       | CX4152   | WORM SHAFT RETAINER      | .31   | 39      | CX4260   | U SPOOL CONVERTER      | 3.07  |
| 4       | CX4301   | MAGNET RET. SPRING       | .36   | 40      | KX4351   | SET PLATE              | 11.68 |
| 5       | CX4156   | WORM GUARD BUSHING       | .62   | 41      | KX4402   | SPOOL RELEASE PLATE    | 2.59  |
| 6       | KX4051   | FRAME                    | 9.21  | 42      | CX4656   | RETAINER CLIP          | .36   |
| 7       | CX4252   | SPOOL SHFT BEARING       | 7.99  | 43      | KX4353   | SET PLATE ACT. SPR.    | .91   |
| 8       | CX4253   | BEARING RETAINER         | .36   | 44      | KX4503   | SET PLATE ACT. 'B'     | 1.36  |
| 9       | KX4159   | FRAME POST               | 6.14  | 45      | CX4658   | BASE DRAG WASHER       | .36   |
| 10      | KX4201   | LINE GUIDE               | 7.55  | 46      | CX4661   | DRAG WASHER A          | .36   |
| 11      | CX4203   | LINE GUIDE PAWL SPRING   | .36   | 47      | CX4662   | DRIVE SHAFT SPR. WSHR  | .36   |
| 12      | CX4202   | LINE GUIDE PAWL          | 2.21  | 48      | CX4258   | O RING                 | .36   |
| 13      | CX4204   | PAWL CAP                 | .91   | 49      | CX4302   | SPOOL TENSION SHIM B   | .36   |
| 14      | CX4158   | WORM SHAFT GUARD-BLK     | 2.64  | 50      | CX4259   | SPOOL TENSION KNOB     | 1.84  |
| 15      | KX4151-1 | WORM SHAFT W/GEAR        | 9.21  | 51      | CX4703   | HANDLE NUT LOCK        | .62   |
| 16      | KX4502   | SPOOL REL. SPRING        | 1.23  | 52      | CX4704   | HANDLE NUT LOCK SCREW  | .36   |
| 17      | KX4401   | PINION YOKE              | 1.23  | 53      | KX4501   | SET PLATE ACT. 'A'     | 1.84  |
| 18      | CX4403   | PINION YOKE SPRING       | .36   | 63      | FX4455   | ANTI-REV. LVR. PLATE   | .91   |
| 19      | CX4452   | ANTI-REV. PAWL           | .91   | 64      | FX4456   | ANTI-REV. LEVER        | 1.41  |
| 20      | NX4256   | PINION GEAR              | 9.21  | 67      | KX4100   | LEVEL WIND HOOD        | 3.69  |
| 21      | KX4652   | DRIVE SHAFT              | 6.14  | 68      | KX4102   | SIDE PLATE SCREW       | 3.25  |
| 22      | CX4451   | ANTI-REV. RATCHET        | 2.64  | 69      | KX4110   | L-SIDE PLT. SCR. WSHR. | .36   |
| 23      | NX4651   | DRIVE GEAR               | 6.14  | 70      | KX4264   | O-RING                 | .62   |
| 24      | CX4659   | DRAG WASHER B            | .62   | 71      | KX4107   | SPOOL COVER B          | 3.69  |
| 25      | CX4254   | DRIVE SHFT BUSH          | .62   | 72      | KX4252   | SPOOL COVER SCREW      | .36   |
| 26      | KX4103   | RIGHT SIDE PLATE         | 15.89 | 73      | KX4406   | SPOOL REL. LEVER       | 2.95  |
| 27      | CX4352   | RIGHT SIDE COVER SCREW   | .36   | 74      | KX4404   | SPOOL RELEASE SHAFT    | 1.84  |
| 28      | CX4663   | STAR DRAG                | 4.90  | 75      | KX4405   | TRIP ARM               | 3.38  |
| 29      | CX4660   | HANDLE WASHER            | .36   | 76      | KX4506   | FLIPPIN LEVER          | 2.64  |
| 30      | CX4701   | HANDLE                   | 5.53  | 77      | KX4305   | DIAL LOCK BUTTON       | 1.66  |
| 31      | CX4702   | HANDLE NUT               | .91   | 78      | KX4304   | DIAL LOCK BUTTON SPR.  | .85   |
| 32      | KX4303   | MAG. CONTROL DIAL        | 6.14  | 79      | KX4052   | FRAME POST SCREW       | .49   |
| 33      | CX4250   | O RING                   | .49   | 80      | KX4408   | SPOOL REL. PLT. WSHR.  | .49   |
| 34      | KX4261   | MAGNET RET. SUPPORT      | 1.84  | 81      | KX4653   | DRIVE SHAFT WSHR       | .62   |
| 35      | CX4255   | SPOOL TENSION SHIM A     | .36   | 82      | KX4407   | TRIP ARM RETAINER      | .36   |
| 36      | CX4602   | MAGNET RETAINER SCREW    | .62   | 83      | KX4409   | SPOOL REL. LVR. WSHR.  | .62   |

Prices subject to change without notice. Prices do not include postage and handling. Some parts may not be available.

**PLEASE ORDER BY PART NUMBER**

Rev. 5/93

Zebco Division Brunswick Corporation, Box 270, Tulsa, OK 74101 USA 918-836-5581

