

# QUANTUM

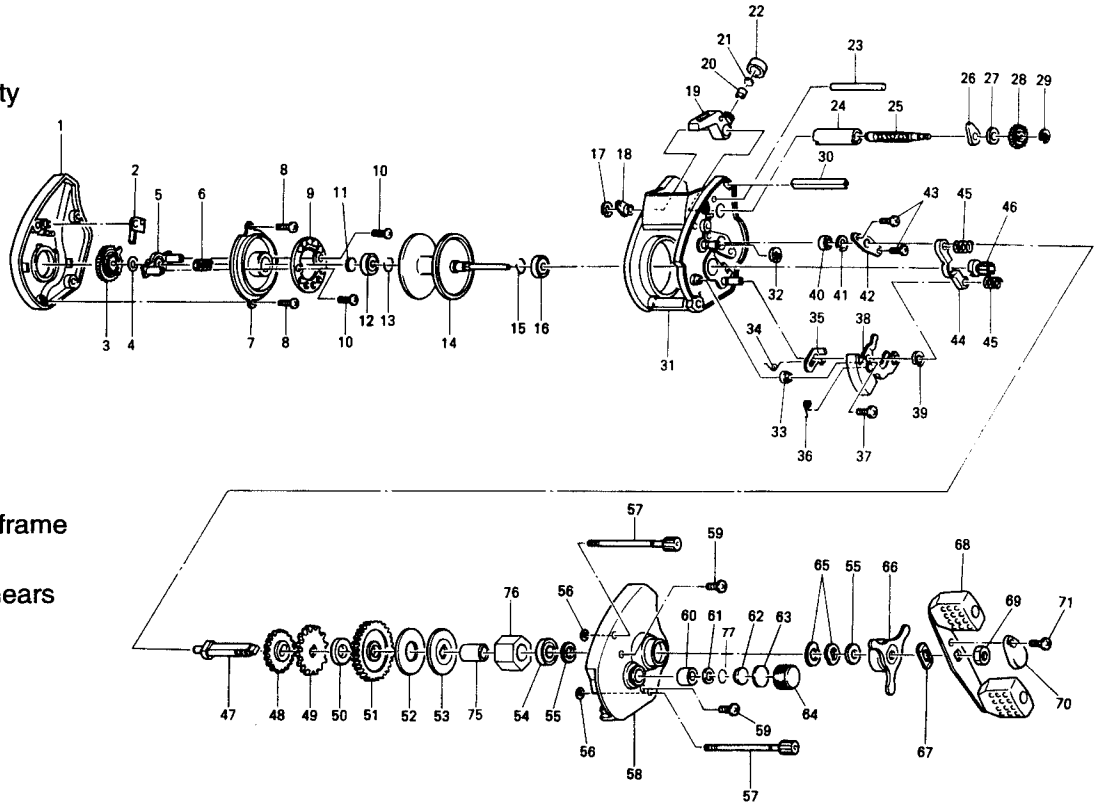
# 1310 CP and 1310 CX

### SPECIFICATIONS:

Medium Freshwater  
 165 yds./12 lb. Line Capacity  
 2 BB; 1 RB  
**1310 CP**  
 3.8:1 Ratio  
 9.2 oz. Weight  
**1310 CX**  
 6.0:1 Ratio  
 9.3 oz. Weight

### FEATURES:

Continuous Anti-Reverse  
 DynaMag magnetic anti-backlash control  
 Rigid one-piece, aluminum frame  
 Forged aluminum spool  
 Machined brass Magnum Gears  
 Q-cast thumb button clutch  
 Multi-disc drag system  
 Left hand retrieve  
 Color:  
**1310CP** - Bronze  
**1310CX** - Light Gold



Key No.	1310CP Part No.	1310CX Part No.	Description	Price	Key No.	1310CP Part No.	1310CX Part No.	Description	Price
1	AV323-03	AV323-02	Left Side Cover Assy	10.75	38	AV339-01	AV339-01	Release Slider Assy	2.60
2	AV108-01	AV108-01	Magnet Click Claw	1.55	39	QW120-01	QW120-01	Yoke Post E-Clip	.26
3	AV026-01	AV026-01	Magnet Dial	1.55	40	JX017-01	JX017-01	Crank Shaft Bushing - L	.77
4	NX105-01	NX105-01	Dial Friction Ring	.62	41	QW120-01	QW120-01	Crank Shaft E-Clip	.26
5	AV028-01	AV028-01	Slider Cam	1.55	42	JX002-01	JX002-01	Crank Shaft Retainer	.57
6	NX071-01	NX071-01	Slide Cam Spring	.52	43	JX107-01	JX107-01	Crank Shaft Retainer Screw	.15
7	AV051-01	AV051-01	Spool Cover	2.80	44	AV025-01	AV025-01	Pinion Yoke	.80
8	AV125-01	AV125-01	Spool Cover Screw	.70	45	AV040-01	AV040-01	Yoke Spring	.50
9	AV330-01	AV330-01	Magnet Plate Assy	7.40	46	UW011-01	TW011-01	Pinion Gear	5.55
10	QW076-02	QW076-02	Magnet Plate Screw	.21	47	JX008-01	JX008-01	Crank Shaft	2.88
11	XX038-02	XX038-02	Spool Shaft Washer	.26	48	JX112-01	JX112-01	O/S Drive Gear	.46
12	XX106-01	XX106-01	Spool Shaft Bushing	1.15	49	JX083-01	JX083-01	Trip Ratchet	.93
13	JX080-01	JX080-01	Clip Ring	.26	50	QW111-01	JX111-01	Ratchet Washer	.46
14	AV321-01	AV321-01	Spool Assy	10.15	51	UW012-01	TW012-01	Drive Gear	7.95
15	JX080-01	JX080-01	Clip Ring	.26	52	AV059-01	AV059-01	Drag Disc	1.65
16	JX106-01	JX106-01	Spool Shaft Bearing	6.33	53	AV045-01	AV045-01	Drag "D" Washer	2.40
17	QW120-01	QW120-01	Worm Shaft Bush E-Clip	.26	54	TW058-01	TW058-01	Crank Shaft Ball Bearing - U	7.21
18	XX067-01	XX067-01	Worm Shaft Bushing "B"	.80	55	JX038-01	JX038-01	Crank Shaft Washer	.31
19	AV347-01	AV347-01	Line Guide Carrier Assy	2.60	56	JX073-01	JX073-01	Thumb Screw O-Ring	.31
20	JX006-01	JX006-01	Line Guide Pawl	1.80	57	AV374-01	AV374-01	Thumb Screw Assy	3.10
21	JX035-01	JX035-01	Line Guide Pawl Washer	.26	58	AV024-03	AV024-02	Right Side Cover	13.85
22	JX007-02	JX007-02	Pawl Cap Screw	.52	59	QW123-07	QW123-07	Right Side Cover Screw	.35
23	JX061-01	JX061-01	Carrier Guide	.98	60	JX117-01	JX117-01	Tension Knob Bushing	.59
24	JX016-01	JX016-01	Worm Shaft Guide	.72	61	AV101-01	AV101-01	Tension Knob O-Ring	.65
25	AV072-01	AV072-01	Worm Shaft	4.65	62	JX081-01	JX081-01	Spool Tension Collar	2.90
26	AV067-01	AV067-01	Worm Shaft Bushing "A"	.80	63	AV083-01	AV083-01	Cushion Washer	.80
27	AV035-01	AV035-01	Washer - Worm Shaft Bushing	.50	64	AV033-01	AV033-01	Spool Tension Knob	2.90
28	AV085-01	AV085-01	Level Wind Gear	.80	65	JX046-01	JX046-01	Spring "D" Washer	.67
29	NX092-01	NX092-01	Level Wind Gear E-Clip	.30	66	AV355-01	AV355-01	Star Drag Assy	6.30
30	AV027-01	AV027-01	Front Support	2.85	67	NX054-01	NX054-01	Handle Washer	.26
31	AV301-01	AV301-02	Frame Assy	27.50	68	UW318-03	AV318-02	Handle Assy	8.15
32	QW120-01	QW120-01	Yoke Post E-Clip	.26	69	QW003-01	QW003-01	Handle Nut	.36
33	JX068-01	JX068-01	Release Slider Guide Bushing	1.08	70	QW034-04	QW034-01	Handle Nut Cap	.26
34	AV097-01	AV097-01	Kick Lever Spring	.70	71	QW123-01	QW123-01	Handle Nut Cap Screw	.15
35	AV077-01	AV077-01	Kick Lever	1.30	75	CW052-01	CW052-01	One Way Bearing Sleeve	2.88
36	JX104-01	JX104-01	Release Slider Spring	.21	76	UQ063-02	UQ063-02	One Way Bearing	9.27
37	QW123-01	QW123-01	Release Slider Screw	.15	77	QW032-02	QW032-02	Spool Tension Washer	.52

<b>MODEL INTRODUCED</b>	<b>1310 CP - 1996</b> <b>1310 CX - 1997</b>	<b>EFFECTIVE DATE OF PARTS LIST/DIAGRAM</b>	Oct. 1996	<b>DISCONTINUED</b>	N/A
-------------------------	--	---	-----------	---------------------	-----

Prices subject to change without notice. Prices do not include postage and handling.

