

# QUANTUM.

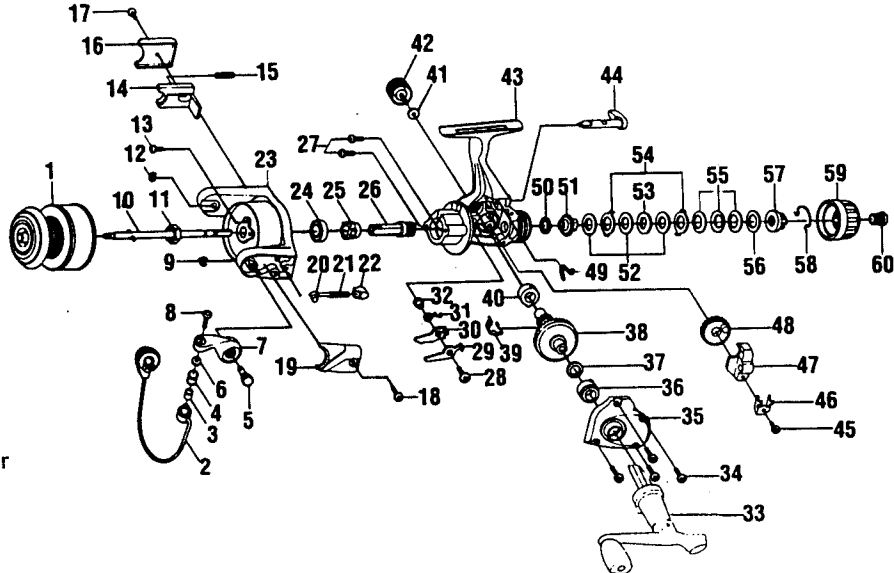
## BT2 / BT3 (B.A.S.S. Tour - Kmart exclusive)

### SPECIFICATIONS :

Application:  
 BT2 - Lt. FW  
 BT3 - Med. FW  
 5.2:1 Gear Ratio  
 Line Capacity:  
 BT2 - 140 yds / 6 lb  
 BT3 - 160 yds / 8 lb  
 Retrieve Rate (Inches Per Turn):  
 BT2 - 24.5"  
 BT3 - 30.2"  
 Weight:  
 BT2 - 9.9 oz.  
 BT3 - 12.4 oz.  
 3 Ball Bearings

### FEATURES :

Front Drag  
 Tru-Balanced Rotor  
 Balanced Handle  
 Oversized Twist Reducer Line Roller  
 Selective On/Off A/R  
 Geared (S-Curve) O/S System  
 Aluminum Spool  
 Spare Graphite Spool  
 Color: Gray



Key No.	Part No. BT2	Part No. BT3	DESCRIPTION	Price	Key No.	Part No. BT2	Part No. BT3	DESCRIPTION	Price
1	JH321-43	JH321-44	Spool Assy.	6.30	31	GU061-01	JU061-01	A/R Pawl Spring	0.37
2	JH347-15	JH347-16	Bail Assy.	4.38	32	GU091-01	GU091-02	A/R Pawl Post	0.27
3	MT016-01	←	Line Roller Bushing	0.77	33	JH318-17	JH318-18	Handle Assy.	4.95
4	KH004-02	←	Line Roller	1.24	34	GU057-02	JU057-03	Body Cover Screw	0.81
5	HU051-01	HU051-03	Arm Lever Pin	0.59	35	JH323-15	KH323-16	Body Cover	3.85
6	GU105-07	←	Line Roller Washer	0.15	36	GU157-01	AQ028-02	Gear Shaft B. Bearing	6.95
7	JH007-03	←	Arm Lever	0.93	37	GU105-08	GU105-13	Adjustment Washer	0.15
8	KQ108-01	←	Line Slider Screw	0.32	38	GU012-01	JU012-02	Drive Gear	2.97
9	KQ034-01	←	E-Clip	0.15	39	GU086-01	JU086-01	Silent Cam	0.42
10	JU315-02	JU315-01	Main Shaft	1.06	40	GU157-01	AQ028-02	Gear Shaft B. Bearing	6.95
11	GU006-01	GU006-02	Rotor Nut	0.84	41	GU105-01	←	Handle Cap Washer	0.10
12	KQ034-01	←	E-Clip	0.15	42	XU073-03	←	Handle Cap Screw	0.62
13	GU077-08	←	Rotor Nut Lck. Scrw.	0.15	43	JH001-15	KH001-16	Body Assy.	6.50
14	HU019-01	JU019-01	Kick Lever	1.06	44	KH090-03	←	A/R Lever	1.49
15	KQ049-04	KQ049-06	Kick Lever Spring	0.26	45	JU100-01	←	O/S Retainer Screw	0.27
16	HU046-06	JU046-05	Kick Lever Cover	0.26	46	HU078-01	JU078-01	O/S Slide Retainer	0.27
17	GU077-02	←	Kick Lever Cover Screw	0.15	47	HU025-01	JU025-01	Oscillator Slider	1.06
18	GU077-02	←	Arm Lever Cover Screw	0.15	48	HU053-01	JU053-01	Oscillator Gear	1.06
19	JH087-05	KH087-04	Arm Lever Spring Cover	0.26	49	GU089-01	←	A/R Lever Spring	0.54
20	KQ031-01	NL031-01	Arm Lever Spring Pin	0.27	50	GU105-34	GU105-32	Drag Friction Washer 'A'	0.81
21	KQ049-05	KQ049-02	Arm Lever Spring	0.32	51	HU075-01	JU075-01	Drag Click Gear	0.64
22	QL020-01	←	Arm Lever Spring Holder	0.32	52	GU105-34	GU105-33	Drag Washer "B"	0.81
23	HU009-22	JU009-23	Rotor	6.35	53	HU080-01	JU080-01	Drag Washer "D"	0.54
24	AQ028-01	AQ028-06	Pinion Ball Bearing	6.47	54	HU081-01	JU081-01	Drag Washer "A"	0.54
25	HU060-01	JU060-01	A/R Ratchet	2.49	55	HU043-01	JU043-01	Drag Spring	0.69
26	GU011-02	JU011-01	Pinion Gear	2.44	56	GU105-24	GU105-19	Drag Washer	0.94
27	GU077-01	JU077-01	Bearing Screw	0.64	57	HU066-01	JU066-01	Drag Nut	0.64
28	GU077-05	←	A/R Pawl Screw	0.15	58	HU070-01	JU083-01	Drag Retainer	1.16
29	GU063-01	JU063-01	A/R Pawl "A" (CNTR)	1.01	59	MU332-01	KU332-01	Drag Knob Assy.	0.77
30	GU074-01	JU074-01	A/R Pawl "B" (ON)	1.01	60	JH101-03	KH101-03	Drag Knob Screw	0.62

<b>MODEL</b>	<b>EFFECTIVE DATE OF</b>	
<b>INTRODUCED : 1998</b>	<b>PARTS LIST/DIAGRAM: Oct. '98</b>	<b>DISCONTINUED : N/A</b>

Prices subject to change without notice. Prices do not include postage and handling.  
 PLEASE ORDER BY PART NUMBER

Zebco, P.O. Box 270, Tulsa, Ok. 74101; 918-831-6965 Phone or 800-FIXREEL (349-7335) FAX

