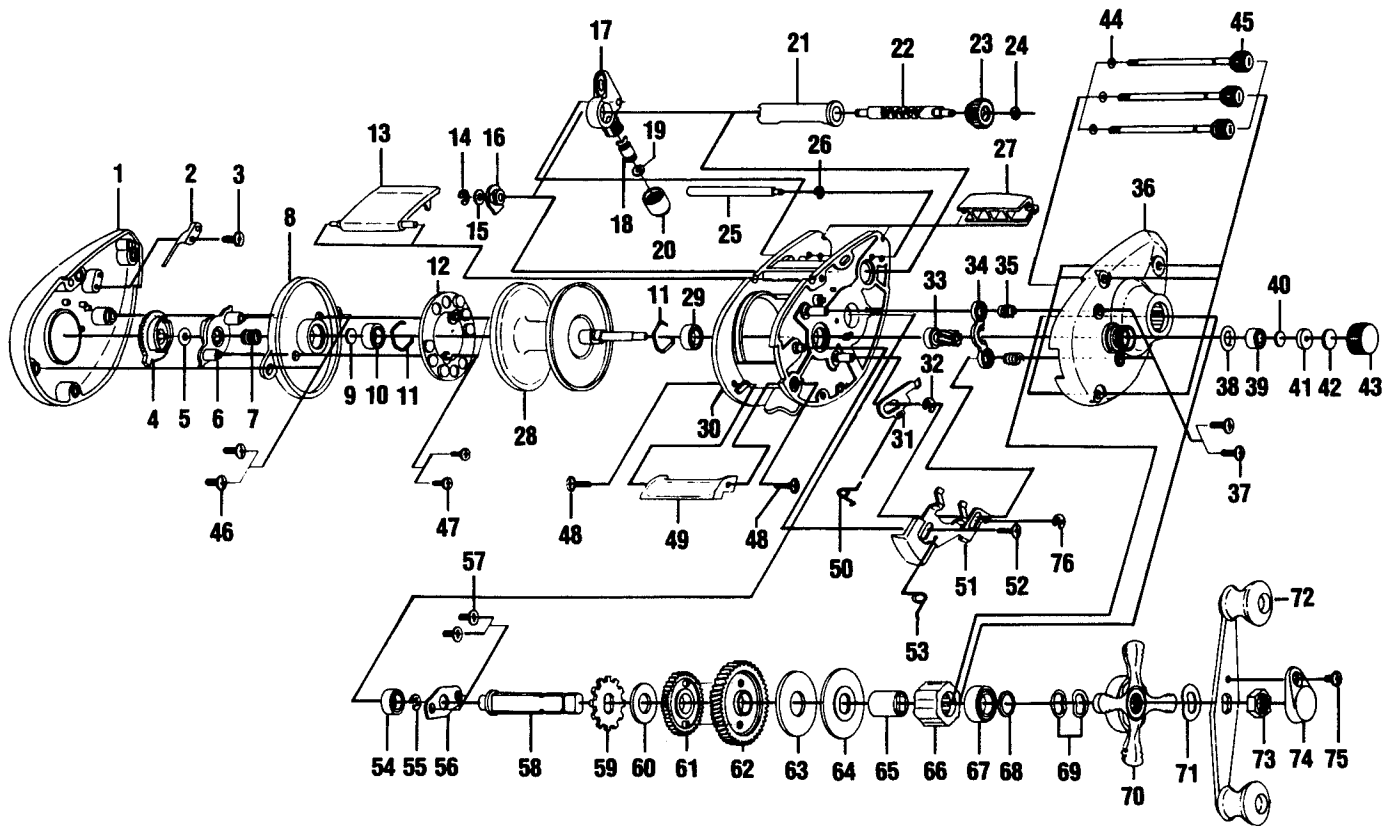


# QUANTUM<sup>®</sup> EX400



Key No.	Part No.	Description	Price	Key No.	Part No.	Description	Price
1	QW023-03	Left Side Cover	8.24	39	QW117-01	Bushing - Tension Knob	.21
2	QW108-01	Clicker	.93	40	QW032-01	Washer- Spool Tension	.52
3	QW125-01	Screw - Clicker	.93	41	QW081-01	Collar	.93
4	QW026-01	Magnet Control Dial	1.24	42	QW082-01	Cushion Washer - Spool	.93
5	NX105-01	Dial Friction Ring	.49	43	QW033-01	Spool Tension Knob	2.83
6	QW028-01	Slide Cam	1.13	44	QW073-01	Ring Thumb Screw Ret.	1.13
7	NX071-01	Slide Cam Spring	.36	45	QW374-01	Thumb Screw	1.13
8	QW051-01	Spool Cover	2.68	46	QW125-01	Screw - Spool Cover	.93
9	QW032-01	Spool Tension Shim	.52	47	QW076-01	Screw Magnet Ring	.62
10	SW017-01	Bearing - Spool Shaft(L)	6.49	48	QW050-01	Screw - Thumb Rest	.93
11	QW080-01	Clip Ring	.52	49	QW009-01	Thumb Rest	.93
12	QW330-01	Magnet Plate Assy	5.51	50	QW097-01	Spring - Kick Lever	.62
13	QW027-06	Hood	5.46	51	QW339-01	Release Slider Assy	2.99
14	NX092-01	E-Clip (Worm Shaft)	.69	52	QW057-01	Screw - Release Slider	.62
15	QW035-03	Washer (Worm Shaft)	.62	53	QW104-01	Spring - Release Slider	.93
16	QW067-01	Worm Shaft Bushing	.93	54	QW017-01	Bushing - Crankshaft	6.59
17	QW347-01	Line Guide Carrier	5.51	55	QW120-01	E-Ring - Crankshaft	.31
18	QW006-01	Line Guide Pawl	2.68	56	QW002-01	Retainer-Crankshaft	1.13
19	QW035-03	Washer (L/G Pawl)	.62	57	QW107-01	Screw - Crankshaft Retainer	.93
20	QW007-01	Line Guide Carrier Screw	2.16	58	QW008-01	Crankshaft	5.41
21	QW016-01	Worm Shaft Guide	1.91	59	QW083-01	Trip Ratchet	1.70
22	QW072-01	Worm Shaft	6.95	60	QW111-01	Washer	.62
23	QW085-01	Level Wind Gear	1.70	61	QW112-01	Gear-L/W Idler	1.49
24	NX090-01	E-Ring (L/W Gear)	.62	62	QW012-01	Drive Gear	10.56
25	QW061-01	Stabilizer Bar	2.58	63	QW059-01	Drag Disc	2.94
26	NX090-01	E-Ring (Stabilizer Bar)	.62	64	QW045-01	Drag Washer	1.24
27	QW099-05	Front Support	3.24	65	QW052-01	Clutch Sleeve	3.19
28	QW321-01	Spool Assy	14.42	66	QW063-01	Anti-Reverse Clutch	10.56
29	SW017-01	Bearing - Spool Shaft(R)	6.59	67	TW058-01	Bearing - Crankshaft Top	6.70
30	QW001-01	Frame	8.45	68	TW035-01	Washer- Crankshaft	1.49
31	QW077-01	Kick Lever	1.49	69	QW046-02	Spring "D" Washer	.36
32	QW120-01	E-Ring (Kick Lever)	.31	70	QW055-01	Drag Star	2.73
33	QW311-01	Pinion Gear	9.79	71	QW054-01	Handle Washer	.36
34	QW025-01	Pinion Yoke	.93	72	QW318-01	Handle Assy -	6.18
35	QW040-01	Spring-Pinion Yoke	.93	73	QW003-01	Handle Nut	1.60
36	QW024-02	Right Side Cover	8.70	74	QW034-01	Handle Nut Cap	.93
37	QW053-01	Screw (Rt. Side Cover)	.93	75	QW123-01	Handle Nut Cap Screw	.93
38	QW101-01	Tension Knob Ring	.36	76	QW120-01	E-Ring - Release Slider	.25

Prices subject to change without notice. Prices do not include postage and handling.

**PLEASE ORDER BY PART NUMBER**

Rev. 6/95

Zebco Division Brunswick Corporation, Box 270, Tulsa, OK 74101 USA 918-836-5581

