

# QUANTUM

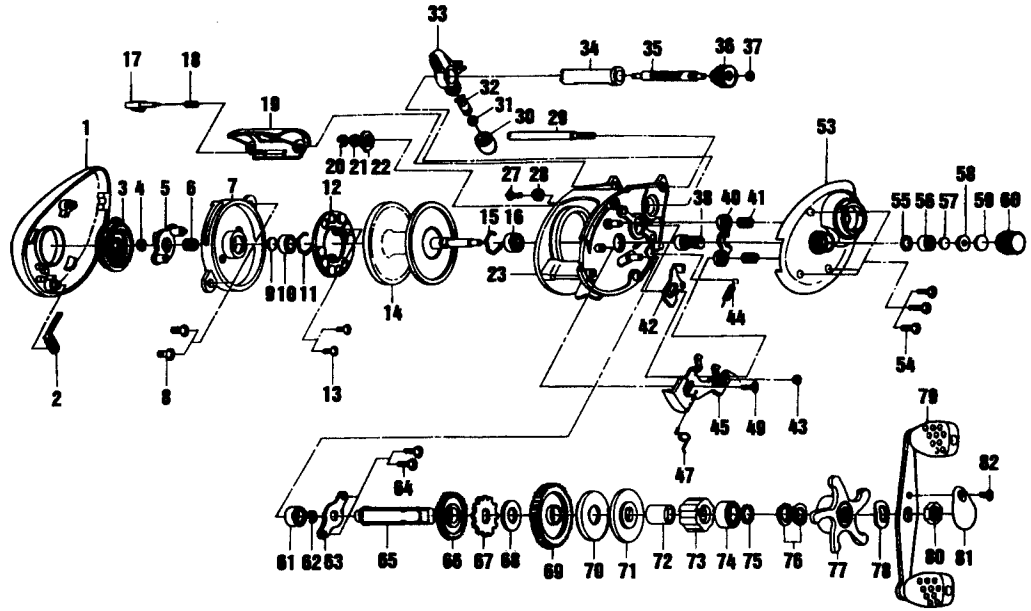
# EX400CB and EX200CB

### SPECIFICATIONS:

Medium Freshwater/Light Saltwater  
 165 yds./12 lb. Line Capacity  
 5.1:1 Ratio  
 8.6 oz. Weight  
 Button Clutch  
**EX200CB** - 1 BB, 1 RB  
**EX400CB** - 3 BB, 1 RB

### FEATURES:

Quick-release, bayonet-style side plate  
 Continuous Anti-Reverse  
 Three retrieve speeds  
 One-piece graphite frame  
 Extra-wide machined brass Magnum Gears  
 Adjustable Magnetic Anti-Backlash Control  
 Color: **EX400CB** - Dark Cherry **EX200CB** - Black



Key No.	EX400CB Part No.	EX200CB Part No.	Description	Price	Key No.	EX400CB Part No.	EX200CB Part No.	Description	Price
1	BV023-07	BV023-06	Left Side Cover	8.00	41	QW040-01	QW040-01	Yoke Spring	.67
2	ZW108-01	ZW108-01	Clicker Spring	1.00	42	DV077-01	DV077-01	Kick Lever	1.55
3	BV026-02	BV026-02	Magnet Dial	1.00	43	QW120-01	QW120-01	E-Clip - Kick Lever	.26
4	NX105-01	NX105-01	Dial Friction Ring	.65	44	ZW097-01	ZW097-01	Spring - Kick Lever	.65
5	BV028-01	BV028-01	Slide Cam	.75	45	DV339-01	DV339-01	Release Slider Assy	3.10
6	NX071-01	NX071-01	Slide Cam Spring	.52	47	DV104-01	DV104-01	Spring - Release Slider	.45
7	ZW051-03B	ZW051-03B	Spool Cover	2.80	49	BV076-01	BV076-01	Screw - Release Slider	.35
8	ZW125-01	ZW125-01	Spool Cover Screw	.50	53	DV024-01	DV024-01	Right Side Cover	12.60
9	QW032-04	QW032-04	Spool Tension Shim	.52	54	BV123-01	BV123-01	Screw - Side Cover	.70
10	UW017-01	N/A	Ball Bearing - Spool Shaft (L)	6.80	55	QW101-01	QW101-01	O-Ring - Tension Knob	.26
10	N/A	BV017-01	Bushing - Spool Shaft (L)	.95	56	QW117-01	QW117-01	Bushing - Tension Knob	.64
11	QW080-01	QW080-01	Clip Ring	.52	57	QW032-04	QW032-04	Washer - Spool Tension	.52
12	QW330-01	QW330-01	Magnet Plate Assy	2.88	58	QW081-01	QW081-01	Collar - Spool Tension	.96
13	QW076-01	QW076-01	Magnet Plate Screw	.67	59	QW082-01	QW082-01	Spool Cushion Washer	.67
14	ZW321-03	ZW321-03	Spool Assy	14.85	60	ZW033-01	ZW033-01	Spool Tension Knob	5.00
15	QW080-01	QW080-01	Clip Ring	.52	61	ZW017-01	ZW017-01	Bushing - Crank Shaft (L)	.65
16	SW017-01	N/A	Bearing - Spool Shaft (R)	6.80	62	QW120-01	QW120-01	E-Clip - Crank Shaft	.26
16	N/A	QW017-01	Bushing - Spool Shaft (R)	.21	63	BV002-01	BV002-01	Retainer - Crank Shaft	.95
17	ZW119-01	ZW119-01	Side Cover Locking Lever	1.00	64	QW107-01	QW107-01	Screw - Crank Shaft Retainer	.46
18	ZW096-01	ZW096-01	Spring - Locking Lever	1.00	65	ZW008-01	ZW008-01	Crank Shaft	5.60
19	BV027-01	BV027-01	Front Support	3.25	66	ZW112-01	ZW112-01	O/S Drive Gear	1.55
20	NX092-01	NX092-01	E-Clip - Worm Shaft	.30	67	QW083-01	QW083-01	Trip Ratchet	.36
21	QW035-03	QW035-03	Washer - Worm Shaft	.26	68	QW111-01	QW111-01	Washer - Trip Ratchet	.26
22	QW067-01	QW067-01	Bushing - Worm Shaft	.67	69	ZW012-01	ZW012-01	Drive Gear	10.90
23	DV001-01	DV001-01	Frame	18.00	70	QW059-01	QW059-01	Drag Disc	1.70
27	BV076-01	BV076-01	Screw - Cover Stopper Collar	.35	71	QW045-01	QW045-01	Drag "D" Washer	.82
28	BV088-01	BV088-01	Collar - Side Cover Stopper	.85	72	CW052-02	CW052-02	Sleeve - One Way Clutch	2.88
29	ZW061-01	ZW061-01	Stabilizer Bar	2.80	73	UQ063-02	UQ063-02	One Way Bearing	9.27
30	ZW007-01	ZW007-01	Screw - Line Guide Carrier	2.85	74	TW058-01	TW058-01	Ball Bearing - Crank Shaft	7.21
31	BV035-01	BV035-01	Washer - Carrier	.40	75	TW035-02	TW035-02	Washer - Crank Shaft	.46
32	ZW006-01	ZW006-01	Line Guide Pawl	2.80	76	QW046-02	QW046-02	Spring "D" Washer	.98
33	ZW347-01	ZW347-01	Line Guide Carrier Assy	5.70	77	ZW055-01	ZW055-01	Star Drag	2.80
34	ZW016-01	ZW016-01	Worm Shaft Guide	2.00	78	QW054-01	QW054-01	Handle Washer	.72
35	ZW072-01	ZW072-01	Worm Shaft	7.20	79	TW318-05	TW318-05	Handle Assy	6.25
36	ZW085-01	ZW085-01	O/S Pinion Gear	1.75	80	QW003-01	QW003-01	Handle Nut	.36
37	NX090-01	NX090-01	E-Clip - O/S Pinion Gear	.41	81	JX034-01	JX034-01	Handle Nut Cap	.42
38	ZW311-01	ZW311-01	Pinion Gear Assy	10.10	82	QW123-01	QW123-01	Screw - Handle Nut Cap	.15
40	DV025-01	DV025-01	Pinion Yoke	1.00					

<b>MODEL INTRODUCED</b>	1996	<b>EFFECTIVE DATE OF PARTS LIST/DIAGRAM</b>	Oct. 1996	<b>DISCONTINUED</b>	N/A
-------------------------	------	---	-----------	---------------------	-----

Prices subject to change without notice. Prices do not include postage and handling.

PLEASE ORDER BY PART NUMBER. Zebco Division, Brunswick Corporation, Box 270, Tulsa, OK 74101 USA 918-931-6965

