

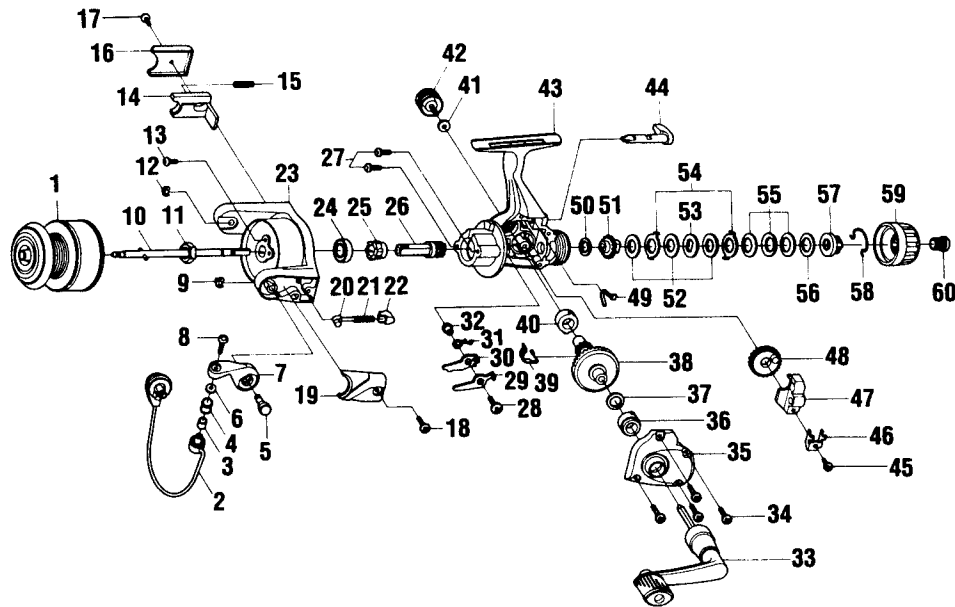
BROWNING® GM12 (Dunham's)

SPECIFICATIONS:

Light Freshwater
 140 yds./6 lb. Line Capacity
 Rear Drag
 4.1:1 Ratio
 7.0 oz. Weight
 3 Ball Bearings

FEATURES:

Rear Drag System
 Three-Way Silent
 (On/Off/Self Centering)
 Right/Left Interchangeable
 Handle
 Internal Bail Trip
 Rotating Line Roller
 Rugged Brass Pinion Gear
 Color - Dark Blue



Key No.	Part No.	Description	Price	Key No.	Part No.	Description	Price
1	JH321-11	Spool Assembly	5.50	31	GU061-01	Anti-Reverse Pawl Spring	.36
2	JH347-01	Bail Assembly	6.13	32	GU091-01	Anti-Reverse Pawl Post	.26
3	MT016-02	Line Roller Bushing	.77	33	JH318-01	Handle Assembly	5.30
4	MT004-01	Line Roller	1.24	34	GU057-01	Body Cover Screw	.15
5	GU051-04	Arm Lever Pin	.57	35	JH023-05	Body Cover	2.35
6	GU105-07	Line Roller Washer	.15	36	GU157-01	Gear Shaft Ball Bearing	6.75
7	NU007-01	Arm Lever	.93	37	GU105-08	Adjustment Washer	.15
8	KQ108-01	Line Slider Screw	.31	38	GU012-01	Drive Gear	2.88
9	KQ034-01	E-Clip	.15	39	GU086-01	Silent Cam	.41
10	JU315-02	Main Shaft Assembly	1.03	40	GU157-01	Gear Shaft Ball Bearing	6.75
11	GU006-01	Rotor Nut	.31	41	GU105-01	Handle Screw Washer	.10
12	KQ034-01	E-Clip	.15	42	GH073-03	Handle Screw	.60
13	GU077-04	Rotor Nut Lock Screw	.15	43	JH001-05	Body	10.05
14	HU019-01	Kick Lever	.52	44	KH090-01	Anti-Reverse Lever	1.49
15	KQ049-04	Kick Lever Spring	.31	45	JU100-01	Oscillator Retainer Screw	.26
16	HU046-01	Kick Lever Cover	.26	46	HU078-01	Oscillator Slide Retainer	.26
17	GU077-02	Kick Lever Cover Screw	.15	47	HU025-01	Oscillator Slider	1.03
18	GU077-02	Arm Lever Cover Screw	.15	48	HU053-01	Oscillator Gear	1.03
19	MU087-01	Arm Lever Spring Cover	.26	49	GU089-01	Anti-Reverse Lever Spring	.52
20	NL031-01	Arm Lever Spring Pin	.26	50	GU105-34	Drag Friction Washer "A"	.79
21	KQ049-05	Arm Lever Spring	.31	51	HU075-01	Drag Click Gear	.62
22	QL020-01	Arm Lever Spring Holder	.31	52	GU105-35	Drag Washer "B"	.91
23	HU009-17	Rotor	3.70	53	HU080-01	Drag Washer "D"	.52
24	AQ028-01	Ball Bearing	6.75	54	HU081-01	Drag Washer Keyed	.52
25	HU060-01	Anti-Reverse Ratchet	2.06	55	HU043-01	Drag Spring	.67
26	GU011-02	Pinion	2.01	56	GU105-24	Drag Washer	.91
27	GU077-01	Bearing Screw	.15	57	HU066-01	Drag Nut	.62
28	GU077-05	Anti-Reverse Pawl Screw	.15	58	HU070-01	Drag Retainer Clip	1.13
29	GU063-01	Anti-Reverse Pawl "A" (Cntr)	.46	59	JH032-01	Drag Knob	1.55
30	GU074-01	Anti-Reverse Pawl "B" (On)	.46	60	JH101-01	Drag Knob Screw	1.29

MODEL INTRODUCED	1996	EFFECTIVE DATE OF PARTS LIST/DIAGRAM	Oct. 1996	DISCONTINUED	N/A
-------------------------	------	---------------------------------------------	-----------	---------------------	-----

Prices subject to change without notice. Prices do not include postage and handling.

PLEASE ORDER BY PART NUMBER Zebco Division Brunswick Corporation, Box 270, Tulsa, OK 74101 USA 918-831-6965

