

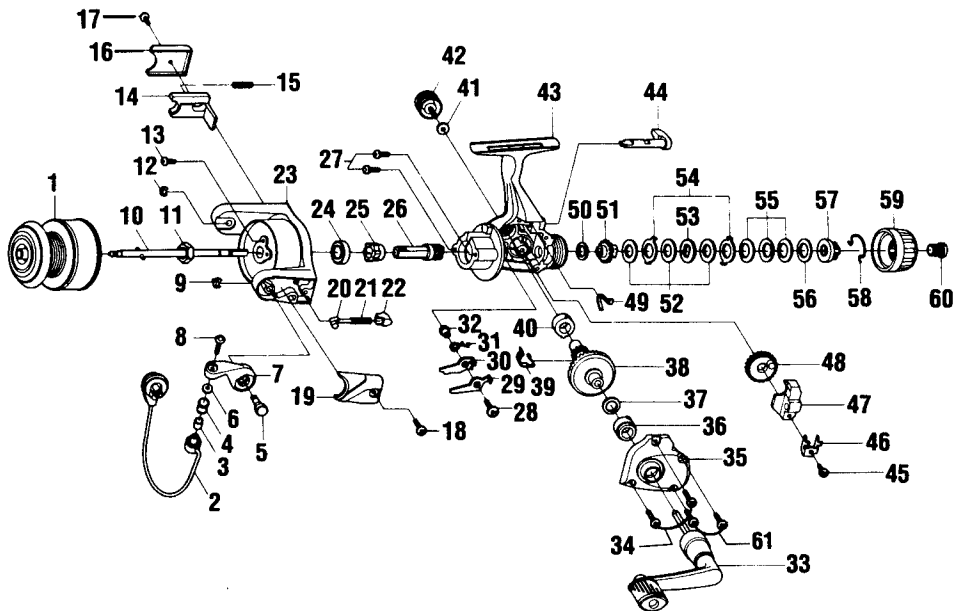
BROWNING GM13 (Dunham's)

SPECIFICATIONS:

Med. Light Freshwater
 160 yds./8 lb. Line Capacity
 Rear Drag
 4.1:1 Ratio
 10.1 oz. Weight
 3 Ball Bearings

FEATURES:

Rear Drag System
 Three-Way Silent
 (On/Off/Self Centering)
 Right/Left Interchangeable
 Handle
 Internal Bail Trip
 Rotating Line Roller
 Rugged Brass Pinion Gear
 Color - Dark Blue



Key No.	Part No.	Description	Price	Key No.	Part No.	Description	Price
1	JH321-12	Spool Assembly	5.50	32	GU091-02	Anti-Reverse Pawl Post	.72
2	JH347-06	Bail Assembly	6.13	33	JH318-02	Handle Assembly	5.30
3	MT016-02	Line Roller Bushing	.77	34	JU057-01	Body Cover Screw	.62
4	MT004-01	Line Roller	1.24	35	KH023-05	Body Cover	2.39
5	GU051-04	Arm Lever Pin	.57	36	AQ028-02	Gear Shaft Ball Bearing	6.10
6	GU105-07	Line Roller Washer	.15	37	GU105-13	Adjustment Washer	.64
7	NU007-01	Arm Lever	.93	38	JU012-02	Drive Gear	3.45
8	KQ108-01	Line Slider Screw	.31	39	JU086-01	Silent Cam	1.13
9	KQ034-01	E-Clip	.15	40	AQ028-02	Gear Shaft Ball Bearing	6.10
10	JU315-01	Main Shaft Assembly	1.80	41	GU105-01	Handle Screw Washer	.10
11	GU006-02	Rotor Nut	.82	42	GH073-03	Handle Screw	.60
12	KQ034-01	E-Clip	.15	43	KH001-05	Body	10.05
13	GU077-04	Rotor Nut Lock Screw	.15	44	KH090-01	Anti-Reverse Lever	1.49
14	JU019-01	Kick Lever	1.03	45	JU100-01	Oscillator Retainer Screw	.26
15	KQ049-06	Kick Lever Spring	.25	46	JU078-01	Oscillator Slide Retainer	.31
16	JU046-01	Kick Lever Cover	.77	47	JU025-01	Oscillator Slider	1.80
17	GU077-02	Kick Lever Cover Screw	.15	48	JU053-01	Oscillator Gear	1.80
18	GU077-02	Arm Lever Cover Screw	.15	49	GU089-01	Anti-Reverse Lever Spring	.52
19	NU087-01	Arm Lever Spring Cover	.77	50	GU105-32	Drag Friction Washer "A"	.77
20	QL031-01	Arm Lever Spring Pin	.77	51	JU075-01	Drag Click Gear	1.29
21	KQ049-02	Arm Lever Spring	.88	52	GU105-33	Drag Washer "B"	.88
22	KL020-01	Arm Lever Spring Holder	.31	53	JU080-01	Drag Washer "D"	1.03
23	JU009-17	Rotor	3.70	54	JU081-01	Drag Washer Keyed	1.03
24	AQ028-06	Ball Bearing	6.28	55	JU043-01	Drag Spring	1.34
25	JU060-01	Anti-Reverse Ratchet	2.42	56	GU105-19	Drag Washer	.96
26	JU011-01	Pinion Gear	2.37	57	JU066-01	Drag Nut	1.29
27	JU077-01	Bearing Screw	.62	58	JU083-01	Drag Click Spring	1.91
28	GU077-05	Anti-Reverse Pawl Screw	.15	59	KH032-01	Drag Knob	1.50
29	JU063-01	Anti-Reverse Pawl "A" (Cntr)	.98	60	KH101-01	Drag Knob Screw	1.29
30	JU074-01	Anti-Reverse Pawl "B" (On)	.98	61	GU057-01	Body Cover Screw	.15
31	JU061-01	Anti-Reverse Pawl Spring	1.03				

MODEL INTRODUCED	1996	EFFECTIVE DATE OF PARTS LIST/DIAGRAM	Oct. 1996	DISCONTINUED	N/A
-------------------------	------	---	-----------	---------------------	-----

Prices subject to change without notice. Prices do not include postage and handling.

PLEASE ORDER BY PART NUMBER Zebco Division Brunswick Corporation, Box 270, Tulsa, OK 74101 USA 918-831-6985

