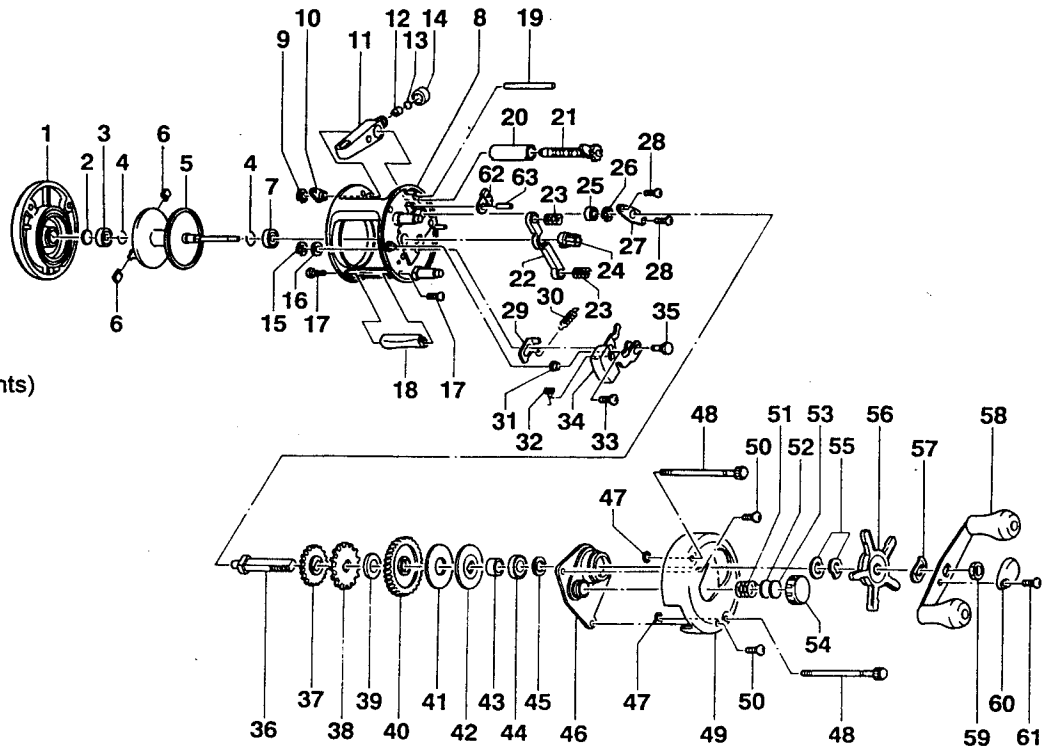


### SPECIFICATIONS:

Med. FW  
 165 yds / 12 lb Line  
 Gear Ratio : 5.2:1  
 Line Retrieve (inches per turn) :  
 Weight - 9.5 oz.  
 Bearings:  
 HR100 - 1 BB  
 HR200 - 2 BB

### FEATURES:

Thumb Button Spool Release  
 Centrifugal Cast Control (2 weights)  
 Die Cast Aluminum Frame  
 15 Stop Anti-Reverse  
 Color:  
 HR100 - Brown  
 HR200 - Gold



Key		Part Number		Key		Part Number			
No.	Description	HR100	HR200	Price	No.	Description	HR100	HR200	Price
1	Palm (Left) Side Cover Assembly	LV323-01	LV323-02	13.95	32	Spring - Release Slider	JX104-01	←	0.22
2	Spool Shaft Washer	XX038-02	←	0.27	33	Screw - Release Slider	XX050-01	←	0.15
3	Bushing - Spool Shaft	XX106-01	←	1.18	34	Release Slider Assembly	JX339-02	←	1.85
4	Clip Ring	JX080-01	←	0.27	35	Post - Kick Lever Guide	JX102-01	←	0.91
5	Spool Assembly	JX321-02	←	14.16	36	Crank Shaft	JX008-01	←	2.97
6	Brake Shoe B	XX044-01	←	0.27	37	O/S Drive Gear	JX112-01	←	0.47
7	Bushing - Spool Shaft	XX106-01	N/A	1.18	38	Trip Ratchet	JX083-01	←	0.96
7	Bearing - Spool Shaft	N/A	JX106-01	6.52	39	Washer - Ratchet	QW111-01	←	0.27
8	Frame Assembly	JX301-08	JX301-09	30.55	40	Drive Gear	JX012-01	←	7.90
9	E-Clip - Worm Shaft	QW120-01	←	0.27	41	Drag Disc	JX059-01	←	1.48
10	Bushing - Worm Shaft	JX067-01	←	0.32	42	Drag "D" Washer	JX045-01	←	0.91
11	Line Guide Carrier Assembly	JX347-02	←	2.39	43	Spacer - Crank Shaft	JX052-01	←	0.69
12	Line Guide Pawl	JX006-02	←	1.85	44	Bearing - Crank Shaft(U)	TW058-01	←	7.43
13	Washer - Line Guide Pawl	JX035-01	←	0.27	45	Crank Shaft Washer	JX038-01	←	0.32
14	Screw - Line Guide Carrier	JX007-02	←	0.54	46	Crank Shaft Guide	JX066-02	←	3.45
15	E-Clip - Kick Lever Guide Post	NX092-01	←	0.31	47	O-Ring - Thumb Screw	JX073-01	←	0.32
16	Washer - Kick Lever Guide	XX035-01	←	0.27	48	Thumb Screw	JX074-03	←	1.28
17	Screw - Thumb Rest	JX050-01	←	0.32	49	Handle (Right) Side Cover	JX024-12	JX024-13	10.02
18	Thumb Rest	JX009-02	←	0.64	50	Side Cover Screw	QW123-01	←	0.15
19	Line Guide Carrier Guide	JX061-01	←	1.01	51	Spring - Tension Knob	JX105-01	←	0.32
20	Worm Shaft Guide	JX016-01	←	0.74	52	Washer - Spool Tension	QW032-02	←	0.27
21	Worm Shaft Assembly	JX372-01	←	7.11	53	Washer - Cushion	JX082-01	←	0.22
22	Pinion Yoke	JX025-01	←	0.54	54	Spool Tension Knob	JX033-02	←	0.84
23	Yoke Spring	JX040-01	←	0.22	55	Spring "D" Washer	JX046-01	←	0.69
24	Pinion Gear	JX011-01	←	5.52	56	Star Drag Assembly	JX055-02	←	3.55
25	Bushing - Crank Shaft(L)	JX017-01	←	0.79	57	Handle Washer	NX054-01	←	0.27
26	E-Clip - Crank Shaft	QW120-01	←	0.27	58	Handle Assembly	XX318-02	←	7.21
27	Retainer - Crank Shaft	JX002-01	←	0.59	59	Handle Nut	QW003-01	←	0.37
28	Screw - Crank Shaft Retainer	JX107-01	←	0.15	60	Handle Nut Cap	JX034-02	←	0.37
29	Kick Lever	JX077-01	←	0.59	61	Handle Nut Cap Screw	QW123-01	←	0.15
30	Spring - Kick Lever	JX097-01	←	0.15	62	Anti Reverse Pawl Assembly	JX363-01	←	2.60
31	Bushing - Release Slider Guide	JX068-01	←	1.10	63	Post - Anti Reverse Pawl	JX098-01	←	0.42

<b>MODEL</b>	<b>EFFECTIVE DATE OF</b>	<b>DISCONTINUED:</b>
<b>INTRODUCED:</b> 1998	<b>PARTS LIST/DIAGRAM:</b> Aug. 1998	<b>N / A</b>

Prices subject to change without notice. Prices do not include postage and handling.

PLEASE ORDER BY PART NUMBER

Zeeco, P.O. Box 270, Tulsa, Ok 74101; 918-831-6965 Phone or 800-FIXREEL (349-7335) FAX

