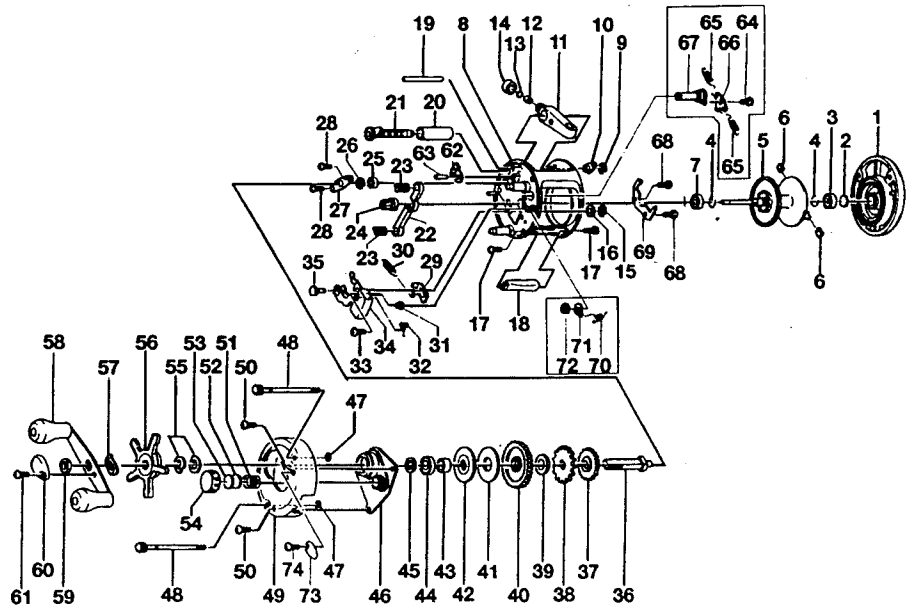


### SPECIFICATIONS:

Med. Hvy FW  
 180 yds / 14 lb Line  
 Gear Ratio : 5.2:1  
 Line Retrieve (inches per turn) :  
 Weight - 10 oz.  
 Bearings:  
 HR100W - 1 BB  
 HR200W - 2 BB

### FEATURES:

Thumb Button Spool Release  
 Centrifugal Cast Control (2 weights)  
 Die Cast Aluminum Frame  
 Baitclicker  
 15 Stop Anti-Reverse  
 Color:  
 HR100W - Brown  
 HR200W - Gold



Key No.	Description	Part Number	HR100W	HR200W	Price	Key No.	Description	Part Number	HR100W	HR200W	Price
1	Palm (Left) Side Cover Assy.	LV323-01	LV323-02	13.95	38	Trip Ratchet	JX083-01	←	0.96		
2	Spool Shaft Washer	XX038-02	←	0.27	39	Washer - Ratchet	QW111-01	←	0.27		
3	Bushing - Spool Shaft	XX106-01	←	1.18	40	Drive Gear	JX012-01	←	7.90		
4	Clip Ring	JX080-01	←	0.27	41	Drag Disc	JX059-01	←	1.48		
5	Spool Assembly	XX321-02	←	14.16	42	Drag "D" Washer	JX045-01	←	0.91		
6	Brake Shoe B	XX044-01	←	0.27	43	Spacer - Crank Shaft	JX052-01	←	0.69		
7	Bushing - Spool Shaft	XX106-01	N/A	1.18	44	Bearing - Crank Shaft(U)	TW058-01	←	7.43		
7	Bearing - Spool Shaft	N/A	JX106-01	6.52	45	Crank Shaft Washer	JX038-01	←	0.32		
8	Frame Assembly	XX301-06	XX301-07	31.30	46	Crank Shaft Guide	JX066-02	←	3.45		
9	E-Clip - Worm Shaft	QW120-01	←	0.27	47	O-Ring - Thumb Screw	JX073-01	←	0.32		
10	Bushing - Worm Shaft	JX067-01	←	0.32	48	Thumb Screw	JX074-04	←	1.28		
11	Line Guide Carrier Assembly	JX347-02	←	2.39	49	Handle (Right) Side Cover	XX024-11	←	10.02		
12	Line Guide Pawl	JX006-02	←	1.85	50	Side Cover Screw	QW123-01	←	0.15		
13	Washer - Line Guide Pawl	JX035-01	←	0.27	51	Spring - Tension Knob	JX105-01	←	0.32		
14	Screw - Line Guide Carrier	JX007-02	←	0.54	52	Washer - Spool Tension	QW032-02	←	0.27		
15	E-Clip - Kick Lever Guide Post	NX092-01	←	0.31	53	Washer - Cushion	JX082-01	←	0.22		
16	Washer - Kick Lever Guide	XX035-01	←	0.27	54	Spool Tension Knob	JX033-02	←	0.84		
17	Screw - Thumb Rest	JX050-01	←	0.32	55	Spring "D" Washer	JX046-01	←	0.69		
18	Thumb Rest	XX009-02	←	0.64	56	Star Drag Assembly	JX055-02	←	3.55		
19	Line Guide Carrier Guide	XX061-01	←	1.01	57	Handle Washer	NX054-01	←	0.27		
20	Worm Shaft Guide	XX016-01	←	0.74	58	Handle Assembly	XX318-02	←	7.21		
21	Worm Shaft Assembly	XX372-01	←	7.64	59	Handle Nut	QW003-01	←	0.37		
22	Pinion Yoke	JX025-01	←	0.54	60	Handle Nut Cap	JX034-02	←	0.37		
23	Yoke Spring	JX040-01	←	0.22	61	Handle Nut Cap Screw	QW123-01	←	0.15		
24	Pinion Gear	JX011-01	←	5.52	62	Anti Reverse Pawl Assembly	JX363-01	←	2.60		
25	Bushing - Crank Shaft(L)	JX017-01	←	0.79	63	Post - Anti Reverse Pawl	JX098-01	←	0.42		
26	E-Clip - Crank Shaft	QW120-01	←	0.27	64	Screw - Clicker Pawl	XX125-01	←	1.01		
27	Retainer - Crank Shaft	JX002-01	←	0.59	65	Clicker Spring	JX110-01	←	0.22		
28	Screw - Crank Shaft Retainer	JX107-01	←	0.15	66	Clicker Pawl	JX114-01	←	0.72		
29	Kick Lever	JX077-01	←	0.59	67	Clicker Cam	JX084-01	←	2.97		
30	Spring - Kick Lever	JX097-01	←	0.15	68	Screw - Clicker Spring Holder	JX125-01	←	0.22		
31	Bushing - Release Slider Guide	JX068-01	←	1.10	69	Clicker Spring Holder	JX103-01	←	1.24		
32	Spring - Release Slider	JX104-01	←	0.22	70	Spring - Clicker Cam	JX022-01	←	0.27		
33	Screw - Release Slider	XX050-01	←	0.15	71	Click Cam Actuator	JX041-01	←	0.37		
34	Release Slider Assembly	JX339-02	←	1.85	72	C-Clip	JX075-01	←	0.22		
35	Post - Kick Lever Guide	JX102-01	←	0.91	73	Click Lever	JX109-02	←	0.54		
36	Crank Shaft	JX008-01	←	2.97	74	Screw - Click Lever	QW053-05	←	0.27		
37	O/S Drive Gear	JX112-01	←	0.47							

<b>MODEL</b>	<b>EFFECTIVE DATE OF</b>	<b>DISCONTINUED:</b>
INTRODUCED: 1998	PARTS LIST/DIAGRAM: Aug. 1998	N / A

Prices subject to change without notice. Prices do not include postage and handling.

PLEASE ORDER BY PART NUMBER

Zebco, P.O. Box 270, Tulsa, Ok. 74101; 918-831-6965 Phone or 800-FIXREEL (349-7335) FAX

