



HR200L / HR200WL

SPECIFICATIONS:

Med. Hvy FW

Line Capacity:

HR200L - 165 yds / 12 lb

HR200WL - 180 yds / 14 lb Line

Gear Ratio : 5.2:1

Line Retrieve (inches per turn) : 21"

Weight :

HR200L - 9.5 oz.

HR200WL - 10 oz.

Bearings: 2 BB

FEATURES:

Left Hand Retrieve

Thumb Button Spool Release

Centrifugal Cast Control (2 weights)

Die Cast Aluminum Frame

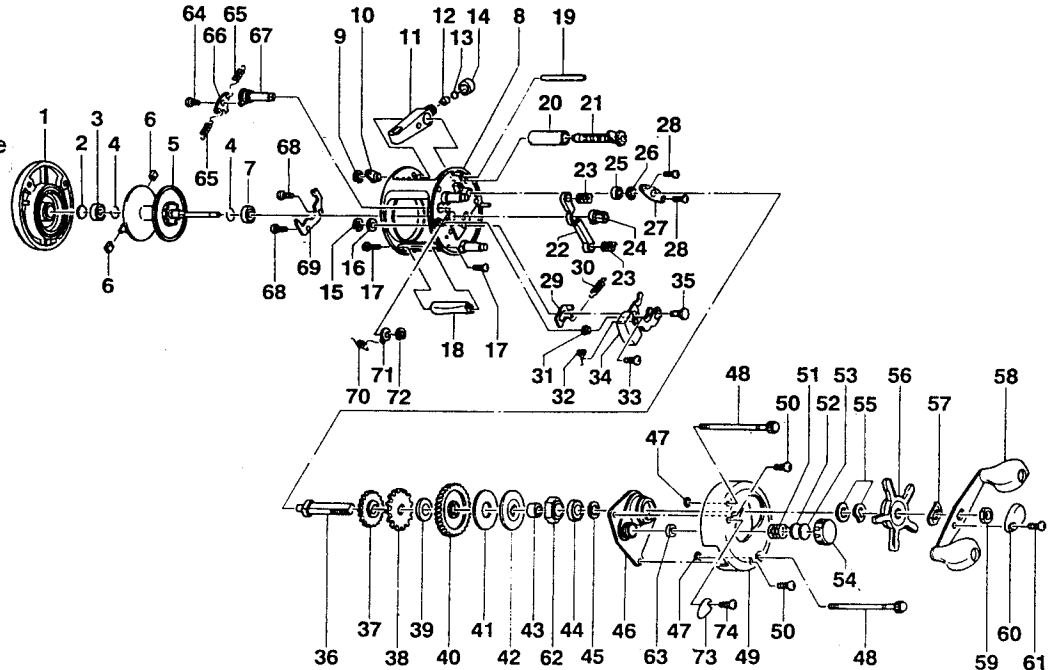
Baitclicker - HR200WL

15 Stop Anti-Reverse

Color:

HR200L - Gold

HR200WL - Gold



Key No.	Description	Part Number			Key No.	Description	Part Number		
		HR200L	HR200WL	Price			HR200L	HR200WL	Price
1	Palm (right) Side Cover Assembly	EV324-05	←	10.04	38	Trip Ratchet	JX083-01	←	0.96
2	Spool Shaft Washer	XX038-02	←	0.27	39	Washer - Ratchet	QW111-01	←	0.27
3	Bushing - Spool Shaft	XX106-01	←	1.18	40	Drive Gear	EV012-01	←	7.88
4	Clip Ring	JX080-01	←	0.27	41	Drag Disc	JX059-01	←	1.48
5	Spool Assembly	EV321-01	JV321-01	14.16	42	Drag "D" Washer	JX045-01	←	0.91
6	Brake Shoe B	XX044-01	←	0.27	43	Spacer - Crank Shaft	JX052-01	←	0.69
7	Bearing - Spool Shaft	JX106-01	←	6.52	44	Bearing - Crank Shaft(U)	TW058-01	←	7.43
8	Frame Assembly	EV301-06	JV301-03	30.54	45	Crank Shaft Washer	JX038-01	←	0.32
9	E-Clip - Worm Shaft	QW120-01	←	0.27	46	Crank Shaft Guide	EV066-01	←	3.45
10	Bushing - Worm Shaft	JX067-01	←	0.32	47	O-Ring - Thumb Screw	JX073-01	←	0.32
11	Line Guide Carrier Assembly	JX347-02	←	2.39	48	Thumb Screw	JX074-03	JX074-04	1.28
12	Line Guide Pawl	JX006-02	←	1.85	49	Handle (Left) Side Cover	EV023-06	JV023-03	13.55
13	Washer - Line Guide Pawl	JX035-01	←	0.27	50	Side Cover Screw	QW123-01	←	0.15
14	Screw - Line Guide Carrier	JX007-02	←	0.54	51	Spring - Tension Knob	JX105-01	←	0.32
15	E-Clip - Kick Lever Guide Post	NX092-01	←	0.31	52	Washer - Spool Tension	QW032-02	←	0.27
16	Washer - Kick Lever Guide	XX035-01	←	0.27	53	Washer - Cushion	JX082-01	←	0.22
17	Screw - Thumb Rest	JX050-01	←	0.31	54	Spool Tension Knob	JX033-02	←	0.84
18	Thumb Rest	JX009-02	XX009-02	0.64	55	Spring "D" Washer	JX046-01	←	0.69
19	Line Guide Carrier Guide	JX061-01	XX061-01	1.01	56	Star Drag Assembly	EV055-01	←	2.52
20	Worm Shaft Guide	JX016-01	XX016-01	0.74	57	Handle Washer	NX054-01	←	0.27
21	Worm Shaft Assembly	JX372-01	XX372-01	7.11	58	Handle Assembly	XX318-02	←	7.21
22	Pinion Yoke	EV025-01	←	0.57	59	Handle Nut	QW003-02	←	0.37
23	Yoke Spring	JX040-01	←	0.22	60	Handle Nut Cap	JX034-02	←	0.37
24	Pinion Gear	EV011-01	←	5.56	61	Handle Nut Cap Screw	QW123-01	←	0.15
25	Bushing - Crank Shaft(L)	JX017-01	←	0.79	62	Anti Reverse Pawl Assembly	JX363-01	←	2.60
26	E-Clip - Crank Shaft	QW120-01	←	0.27	63	Post - Anti Reverse Pawl	JX098-01	←	0.42
27	Retainer - Crank Shaft	JX002-01	←	0.59	64	Screw - Clicker Pawl	N/A	XX125-01	1.01
28	Screw - Crank Shaft Retainer	JX107-01	←	0.15	65	Clicker Spring	N/A	JX110-01	0.22
29	Kick Lever	EV077-01	←	0.62	66	Clicker Pawl	N/A	JX114-01	0.72
30	Spring - Kick Lever	JX097-01	←	0.15	67	Clicker Cam	N/A	JX084-01	2.97
31	Bushing - Release Slider Guide	JX068-01	←	1.10	68	Screw - Clicker Spring Holder	N/A	JX125-01	0.22
32	Spring - Release Slider	EV104-01	←	0.26	69	Clicker Spring Holder	N/A	JV103-01	1.24
33	Screw - Release Slider	XX050-01	←	0.15	70	Spring - Clicker Cam	N/A	EV022-01	0.31
34	Release Slider Assembly	EV339-01	←	1.85	71	Click Cam Actuator	N/A	JX041-01	0.37
35	Post - Kick Lever Guide	JX102-01	←	0.91	72	C-Clip	N/A	JX075-01	0.22
36	Crank Shaft	JX008-02	←	2.97	73	Click Lever	N/A	JV109-01	0.54
37	O/S Drive Gear	JX112-01	←	0.47	74	Screw - Click Lever	N/A	QW053-05	0.27

MODEL	EFFECTIVE DATE OF	DISCONTINUED:
INTRODUCED: 1998	PARTS LIST/DIAGRAM: Aug. 1998	N / A

Prices subject to change without notice. Prices do not include postage and handling.

PLEASE ORDER BY PART NUMBER

Zebco, P.O. Box 270, Tulsa, Ok. 74101; 918-831-6965 Phone or 800-FIXREEL (349-7335) FAX

