

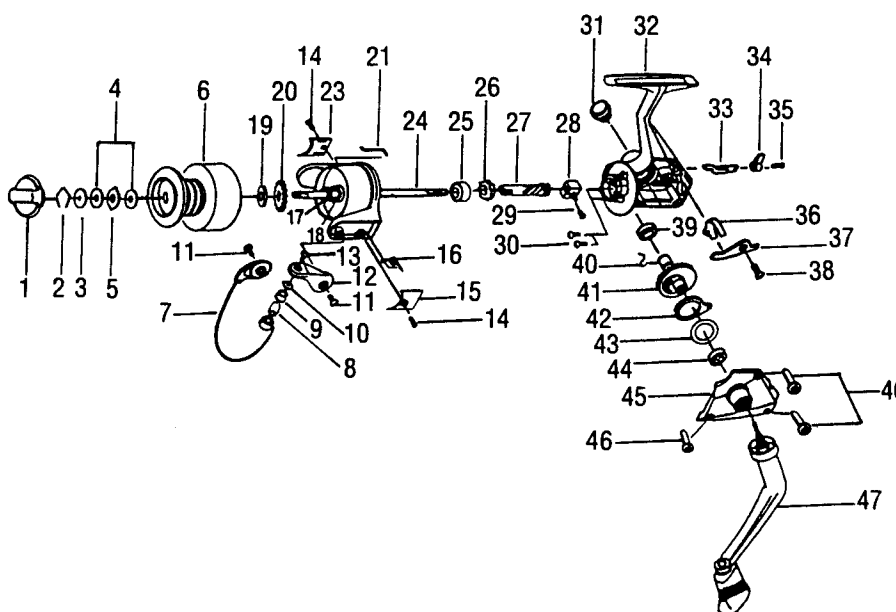
QUANTUM HT-00

SPECIFICATIONS:

Micro Light Fresh
 80 yds./4 lbs. Line Capacity
 5.2:1 Ratio
 4.9 oz. Weight
 1 Ball Bearings

FEATURES:

Front Drag System
 Silent Anti-Reverse
 Right/Left Balanced Handle
 Internal Bail Trip
 Twist Reducing Line Roller
 Brass Pinion Gear
 Color: Grey



Key No.	Part No.	Description	Price	Key No.	Part No.	Description	Price
1	QH332-02	Drag Knob Assembly	1.60	30	GU077-01	Bearing Screw	.15
2	QH038-01	Drag Retainer	.40	31	QH073-02	Handle Screw Cap	.55
3	QH080-01	Drag Washer "D"	.45	32	QH001-05	Body	2.60
4	QH033-01	Drag Washer "B"	.70	33	QH059-01	Anti-Reverse Cam	.70
5	QH081-01	Drag Washer "A"	.40	34	QH090-02	Anti-Reverse Lever	.40
6	QH321-05	Spool Assembly	6.05	35	QH135-01	A/R Lever Screw	.25
7	QH347-03	Bail Assembly	2.25	36	QH089-01	A/R Lever Spring	.25
8	QH016-01	Line Roller Bushing	.25	37	QH063-01	A/R Lever Pawl	.40
9	QH004-01	Line Roller	.70	38	QH077-01	A/R Lever Pawl Screw	.25
10	GU105-07	Line Roller Washer	.15	39	QH027-01	Gear Shaft Bushing	.50
11	QH051-02	Arm Lever Screw	.25	40	QH086-01	Silent Cam	.40
12	QH007-02	Arm Lever	1.15	41	QH012-01	Driver Gear	.85
13	AQ108-04	Line Slider Screw	.31	42	QH104-01	Oscillator Cam	1.00
14	GU077-09	Cover Screw	.35	43	QH026-01	Drive Gear Adj. Washer	.30
15	QH087-02	Bail Spring Cover	.45	44	QH027-01	Gear Shaft Bushing	.50
16	QH022-01	Bail Spring	.35	45	QH023-05	Body Cover	1.60
17	QH006-01	Rotor Nut	.50	46	GU057-02	Body Cover Screw	.81
18	QH065-01	Rotor Washer	.25	47	QH318-03	Handle Assembly	3.15
19	QH030-01	Spool Adjustment Washer	.25				
20	QH037-01	Click Gear	.40				
21	QH009-02	Rotor	.80				
22	QH019-01	Kick Lever	.40				
23	QH024-02	Kick Lever Cover	.45				
24	QH015-01	Main Shaft	1.15				
25	AQ028-02	Pinion Ball Bearing	6.28				
26	QH060-01	Ratchet Gear	.80				
27	QH011-01	Pinion Gear	2.85				
28	QH025-01	Oscillator Slider	.50				
29	QH100-01	Main Shaft Screw	.25				

MODEL INTRODUCED	1998	EFFECTIVE DATE OF PARTS LIST/DIAGRAM	Feb. 1998	DISCONTINUED	N/A
-------------------------	------	---	-----------	---------------------	-----

Prices subject to change without notice. Prices do not include postage and handling.

PLEASE ORDER BY PART NUMBER Zebco Division Brunswick Corporation, Box 270, Tulsa, OK 74101 USA 918-836-5581

