

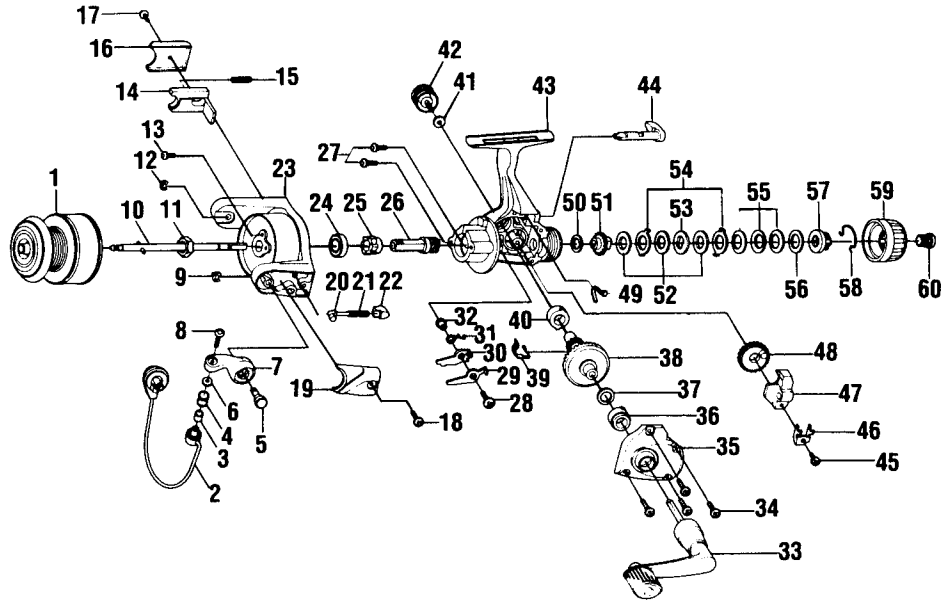
# QUANTUM<sup>®</sup> HEAT HT2

## SPECIFICATIONS:

Light Freshwater  
 140 yds./6 lb. Line Capacity  
 Rear Drag  
 4.4:1 Gear Ratio  
 9.9 oz. Weight  
 1 Ball Bearing

## FEATURES:

Aluminum LongStroke Spool  
 Three-Way/Selective  
 Anti-Reverse (off/on/self-centering)  
 Lightweight Graphite Body  
 Coil-Type Bail Spring for  
 Ultimate Reliability  
 Color: Light Gold



Key No.	Part No.	Description	Price	Key No.	Part No.	Description	Price
1	JH321-21	Spool Assembly	6.30	31	GU061-01	Anti-Reverse Pawl Spring	.36
2	JH347-15	Bail Assembly	4.38	32	GU091-01	Anti-Reverse Pawl Post	.26
3	MT016-02	Line Roller Bushing	.77	33	JH318-12	Handle Assembly	4.95
4	KH004-02	Line Roller	1.24	34	GU057-02	Body Cover Screw	.79
5	GU051-03	Arm Lever Pin	1.03	35	JH023-07	Body Cover	3.85
6	GU105-07	Line Roller Washer	.15	36	GU027-01	Gear Shaft Bushing	.82
7	JH007-03	Arm Lever	.93	37	GU105-08	Adjustment Washer	.19
8	KQ108-01	Line Slider Screw	.31	38	GU012-01	Drive Gear	2.88
9	KQ034-01	E-Clip	.15	39	GU086-01	Silent Cam	.41
10	JU315-02	Main Shaft Assembly	1.03	40	GU027-01	Gear Shaft Bushing	.82
11	GU006-01	Rotor Nut	.31	41	GU105-01	Handle Screw Washer	.10
12	KQ034-01	E-Clip	.15	42	GH073-05	Handle Screw	.62
13	GU077-08	Rotor Nut Lock Screw	.15	43	JH001-07	Body	6.50
14	HU019-01	Kick Lever	.52	44	KH090-03	Anti-Reverse Lever	1.49
15	KQ049-04	Kick Lever Spring	.31	45	JU100-01	Oscillator Retainer Screw	.26
16	HU046-05	Kick Lever Cover	.26	46	HU078-01	Oscillator Slide Retainer	.26
17	GU077-02	Kick Lever Cover Screw	.15	47	HU025-01	Oscillator Slider	1.03
18	GU077-02	Arm Lever Cover Screw	.15	48	HU053-01	Oscillator Gear	1.03
19	JH087-03	Arm Lever Spring Cover	.26	49	GU089-01	Anti-Reverse Lever Spring	.52
20	KQ031-01	Arm Lever Spring Pin	.26	50	GU105-34	Drag Friction Washer 'A'	.79
21	KQ049-05	Arm Lever Spring	.31	51	HU075-01	Drag Click Gear	.62
22	QL020-01	Arm Lever Spring Holder	.31	52	GU105-34	Drag Washer "B"	.79
23	HU009-19	Rotor	6.35	53	HU080-01	Drag Washer "D"	.52
24	AQ028-01	Ball Bearing	6.75	54	HU081-01	Drag Washer "A"	.52
25	HU060-01	Anti-Reverse Ratchet	2.06	55	HU043-01	Drag Spring	.67
26	GU011-02	Pinion	2.01	56	GU105-24	Drag Washer	.91
27	GU077-01	Bearing Screw	.15	57	HU066-01	Drag Nut	.62
28	GU077-05	Anti-Reverse Pawl Screw	.15	58	HU070-01	Drag Retainer Clip	1.13
29	GU063-01	Anti-Reverse Pawl "A" (Cntr)	.46	59	MU332-01	Drag Knob Assembly	.77
30	GU074-01	Anti-Reverse Pawl "B" (On)	.46	60	JH101-03	Drag Knob Screw	.62

<b>MODEL INTRODUCED</b> 1997	<b>EFFECTIVE DATE OF PARTS LIST/DIAGRAM</b> April 1997	<b>DISCONTINUED</b> N/A
------------------------------	--	-------------------------

Prices subject to change without notice. Prices do not include postage and handling.

**PLEASE ORDER BY PART NUMBER** Zebco Division Brunswick Corporation, Box 270, Tulsa, OK 74101 USA 918-831-6965

