

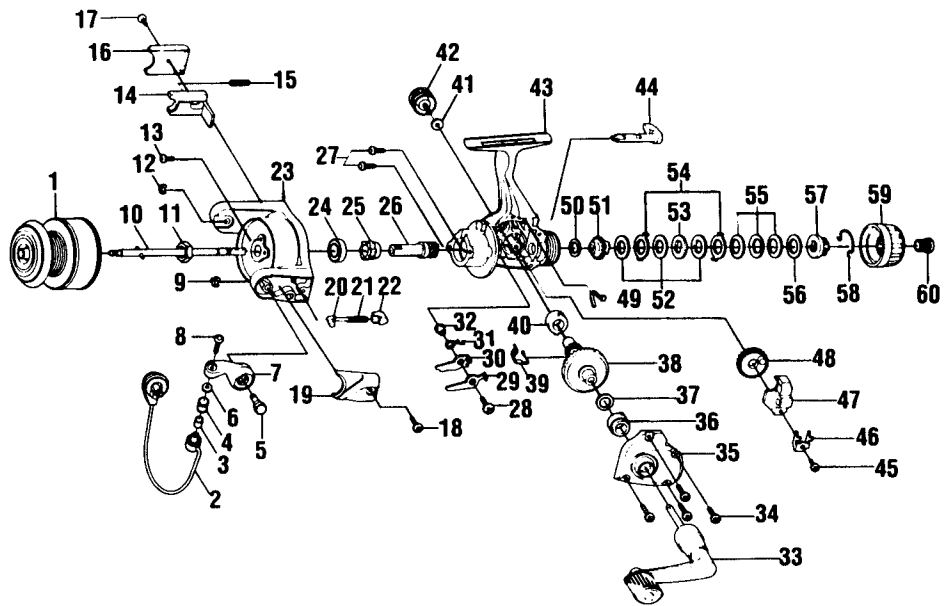
# QUANTUM<sup>®</sup> HEAT HT3

## SPECIFICATIONS:

Med. Lt. Freshwater  
 160 yds./8 lb. Line Capacity  
 Rear Drag  
 4.0:1 Gear Ratio  
 12.4 oz. Weight  
 1 Ball Bearing

## FEATURES:

Aluminum LongStroke Spool  
 Three-Way/Selective  
 Anti-Reverse (off/on/self-centering)  
 Lightweight Graphite Body  
 Coil-Type Bail Spring for  
 Ultimate Reliability  
 Color: Light Gold



Key No.	Part No.	Description	Price	Key No.	Part No.	Description	Price
1	JH321-26	Spool Assembly	6.30	31	JU061-01	Anti-Reverse Pawl Spring	1.03
2	JH347-16	Bail Assembly	4.38	32	GU091-02	Anti-Reverse Pawl Post	.26
3	MT016-02	Line Roller Bushing	.77	33	JH318-13	Handle Assembly	4.95
4	KH004-02	Line Roller	1.24	34	JU057-03	Body Cover Screw	.79
5	GU051-04	Arm Lever Pin	.57	35	KH023-07	Body Cover	3.85
6	GU105-07	Line Roller Washer	.15	36	JU027-01	Gear Shaft Bushing	1.60
7	JH007-03	Arm Lever	.93	37	GU105-13	Adjustment Washer	.64
8	KQ108-01	Line Slider Screw	.31	38	JU012-02	Drive Gear	3.45
9	KQ034-01	E-Clip	.15	39	JU086-01	Silent Cam	1.13
10	JU315-01	Main Shaft Assembly	1.80	40	JU027-01	Gear Shaft Bushing	1.60
11	GU006-02	Rotor Nut	.31	41	GU105-01	Handle Screw Washer	.10
12	KQ034-01	E-Clip	.15	42	GH073-05	Handle Screw	.62
13	GU077-08	Rotor Nut Lock Screw	.15	43	KH001-07	Body	6.50
14	JU019-01	Kick Lever	1.03	44	KH090-03	Anti-Reverse Lever	1.49
15	KQ049-06	Kick Lever Spring	.29	45	JU100-01	Oscillator Retainer Screw	.26
16	JU046-04	Kick Lever Cover	.26	46	JU078-01	Oscillator Slide Retainer	.31
17	GU077-02	Kick Lever Cover Screw	.15	47	JU025-01	Oscillator Slider	1.80
18	GU077-02	Arm Lever Cover Screw	.15	48	JU053-01	Oscillator Gear	1.80
19	JH087-03	Arm Lever Spring Cover	.26	49	GU089-01	Anti-Reverse Lever Spring	.52
20	NL031-01	Arm Lever Spring Pin	.26	50	GU105-32	Drag Friction Washer 'A'	.77
21	KQ049-02	Arm Lever Spring	.88	51	JU075-01	Drag Click Gear	1.29
22	QL020-01	Arm Lever Spring Holder	.31	52	GU105-33	Drag Washer 'B'	.88
23	JU009-19	Rotor	6.35	53	JU080-01	Drag Washer 'D'	1.03
24	AQ028-06	Ball Bearing	6.28	54	JU081-01	Drag Washer 'A'	1.03
25	JU060-01	Anti-Reverse Ratchet	2.42	55	JU043-01	Drag Spring	1.34
26	JU011-01	Pinion	2.37	56	GU105-19	Drag Washer	.96
27	JU077-01	Bearing Screw	.62	57	JU066-01	Drag Nut	1.29
28	GU077-05	Anti-Reverse Pawl Screw	.15	58	JU083-01	Drag Click Spring	1.91
29	JU063-01	Anti-Reverse Pawl 'A' (Cntr)	.98	59	KU332-01	Drag Knob Assembly	.77
30	JU074-01	Anti-Reverse Pawl 'B' (On)	.98	60	KH101-03	Drag Knob Screw	.62

<b>MODEL INTRODUCED</b>	1997	<b>EFFECTIVE DATE OF PARTS LIST/DIAGRAM</b>	April 1997	<b>DISCONTINUED</b>	N/A
-------------------------	------	---	------------	---------------------	-----

Prices subject to change without notice. Prices do not include postage and handling.

**PLEASE ORDER BY PART NUMBER** Zebco Division Brunswick Corporation, Box 270, Tulsa, OK 74101 USA 918-831-6965

