

# QUANTUM

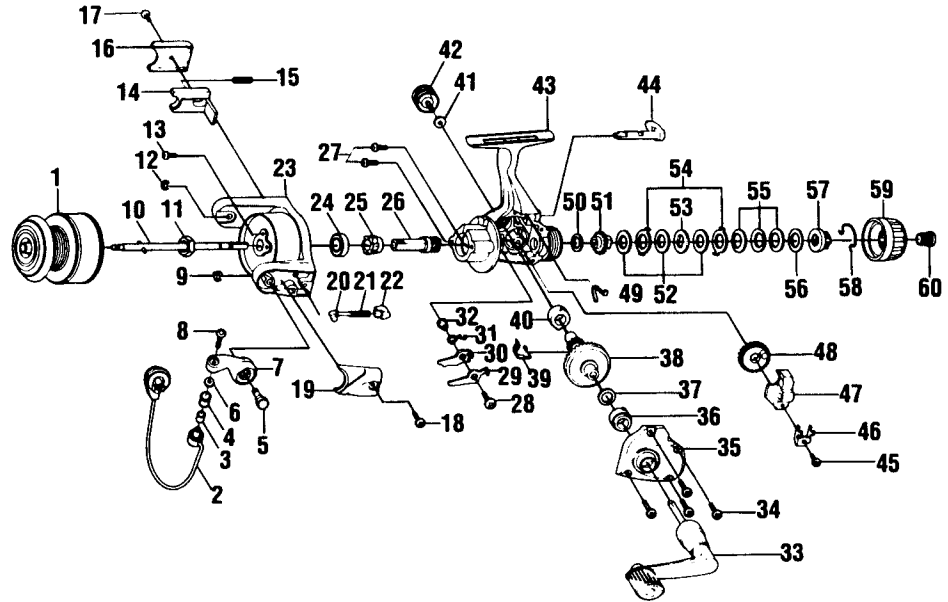
# HEAT HT4

### SPECIFICATIONS:

- Med. Freshwater
- 240 yds./8 lb. Line Capacity
- Rear Drag
- 4.0:1 Gear Ratio
- 13.8 oz. Weight
- 1 Ball Bearing

### FEATURES:

- Aluminum LongStroke Spool
- Three-Way/Selective Anti-Reverse (off/on/self-centering)
- Lightweight Graphite Body
- Coil-Type Bail Spring for Ultimate Reliability
- Color: Light Gold



Key No.	Part No.	Description	Price	Key No.	Part No.	Description	Price
1	JH321-27	Spool Assembly	6.30	31	JU061-01	Anti-Reverse Pawl Spring	1.03
2	JH347-17	Bail Assembly	4.38	32	GU091-02	Anti-Reverse Pawl Post	.26
3	MT016-02	Line Roller Bushing	.77	33	JH318-13	Handle Assembly	4.95
4	KH004-02	Line Roller	1.24	34	JU057-03	Body Cover Screw	.79
5	GU051-04	Arm Lever Pin	.57	35	LH023-06	Body Cover	3.85
6	GU105-07	Line Roller Washer	.15	36	JU027-01	Gear Shaft Bushing	1.60
7	JH007-03	Arm Lever	.93	37	GU105-13	Adjustment Washer	.64
8	KQ108-01	Line Slider Screw	.31	38	JU012-02	Drive Gear	3.45
9	KQ034-01	E-Clip	.15	39	JU086-01	Silent Cam	1.13
10	JU315-03	Main Shaft Assembly	2.01	40	JU027-01	Gear Shaft Bushing	1.60
11	GU006-02	Rotor Nut	.31	41	GU105-01	Handle Screw Washer	.10
12	KQ034-01	E-Clip	.15	42	GH073-05	Handle Screw	.62
13	GU077-08	Rotor Nut Lock Screw	.15	43	LH001-06	Body	6.50
14	KU019-01	Kick Lever	1.13	44	KH090-03	Anti-Reverse Lever	1.49
15	KQ049-06	Kick Lever Spring	.25	45	JU100-01	Oscillator Retainer Screw	.26
16	KU046-04	Kick Lever Cover	.26	46	JU078-01	Oscillator Slide Retainer	.31
17	GU077-02	Kick Lever Cover Screw	.15	47	KU025-01	Oscillator Slider	2.01
18	GU077-02	Arm Lever Cover Screw	.15	48	KU053-01	Oscillator Gear	2.01
19	LH087-03	Arm Lever Spring Cover	.26	49	GU089-01	Anti-Reverse Lever Spring	.52
20	NL031-01	Arm Lever Spring Pin	.26	50	GU105-32	Drag Friction Washer "A"	.77
21	KQ049-02	Arm Lever Spring	.88	51	KU075-01	Drag Click Gear	1.44
22	QL020-01	Arm Lever Spring Holder	.31	52	GU105-33	Drag Washer "B"	.88
23	KU009-16	Rotor	6.35	53	JU080-01	Drag Washer "D"	1.03
24	AQ028-06	Ball Bearing	6.28	54	JU081-01	Drag Washer "A"	1.03
25	JU060-01	Anti-Reverse Ratchet	2.42	55	JU043-01	Drag Spring	1.34
26	JU011-01	Pinion Gear	2.37	56	GU105-19	Drag Washer	.96
27	JU077-01	Bearing Screw	.62	57	JU066-01	Drag Nut	1.29
28	GU077-05	Anti-Reverse Pawl Screw	.15	58	JU083-01	Drag Click Spring	1.91
29	JU063-01	Anti-Reverse Pawl "A" (Cntr)	.98	59	KU332-01	Drag Knob Assembly	.77
30	JU074-01	Anti-Reverse Pawl "B" (On)	.98	60	KH101-03	Drag Knob Screw	.62

<b>MODEL INTRODUCED</b> 1997	<b>EFFECTIVE DATE OF PARTS LIST/DIAGRAM</b> April 1997	<b>DISCONTINUED</b> N/A
------------------------------	--	-------------------------

Prices subject to change without notice. Prices do not include postage and handling.

**PLEASE ORDER BY PART NUMBER** Zebco Division Brunswick Corporation, Box 270, Tulsa, OK 74101 USA 918-831-6965

